

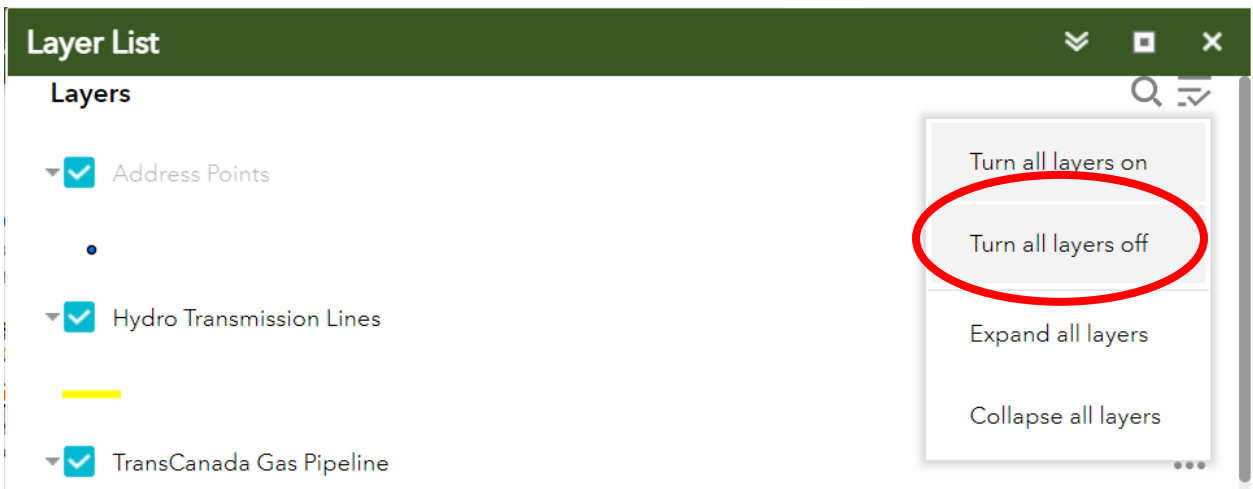
How to Use the Natural Heritage Restoration Interactive Map

The following instructions will show you how to find the Natural Heritage System on the Natural Heritage System Interactive Map.

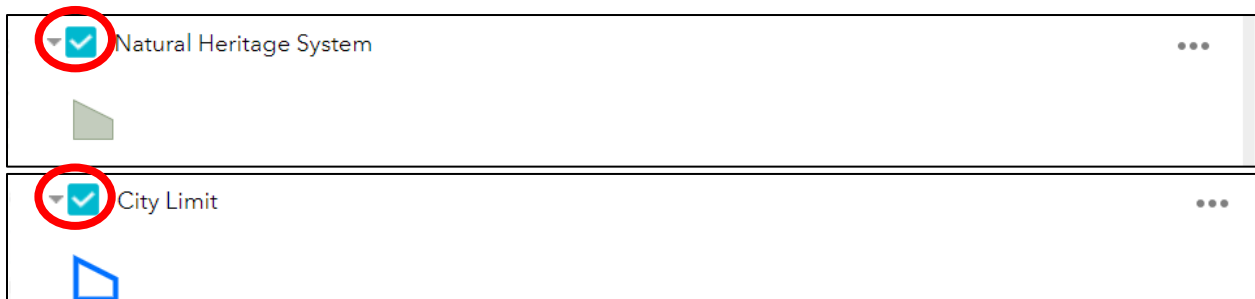
1. Open the [map](#) on your preferred internet browser.
2. Click the 'Layers' button on the top right corner of the map.



3. From the 'Layer List', select 'Turn off all layers' from the menu on the top right of the list. Turning off a layer means that it will not be visible on the map, making it easier to view the Natural Heritage System.



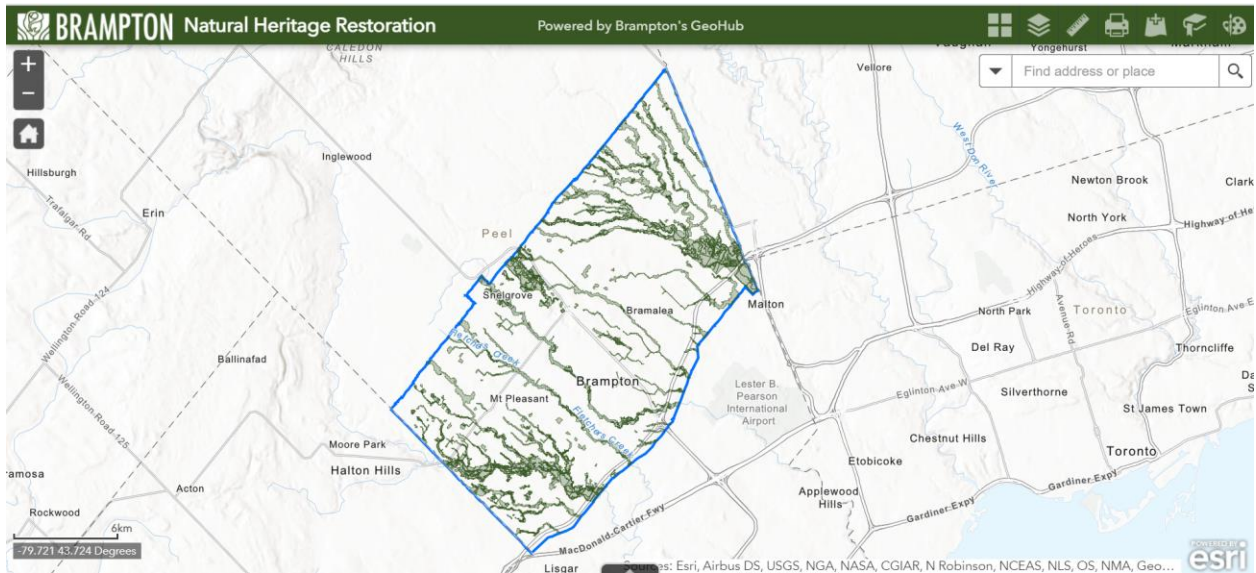
4. Then select the 'Natural Heritage System' and the 'City Limit' layers pictured below. To select a layer, click on the box beside it. This will turn on the layer so that it is visible on the map.



- Once you have the above layers turned on, and any other desired layers selected you may close the 'Layer List' to view the map better. Click the 'x' at the top of the Layer List to do so.



- The image below is what the map will look like with only the 'Natural Heritage System' and 'City Limits' layer turned on.



- In addition to viewing the Natural Heritage System, you will notice that there are many more layers available in the Layer List that you can explore such as City and TRCA restoration projects, No Mow areas, Hydro transmission lines, etc. To view these layers, you can follow steps 2-4 above, and click on the box beside each layer you would like to see to turn it on. A blue check mark in the box beside the layer indicates that the layer is on and visible on the map.