

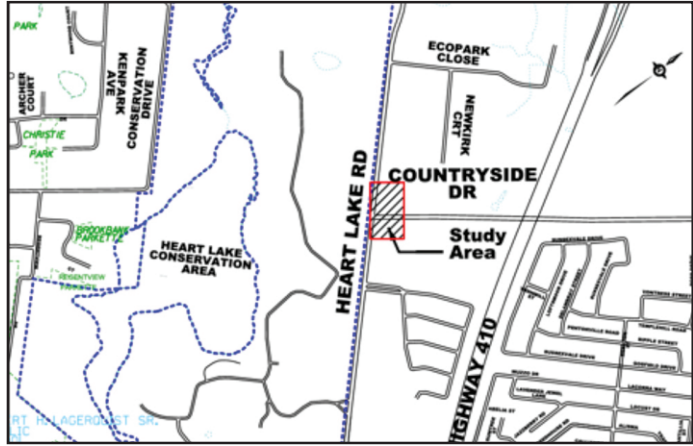
Public Notice

NOTICE OF STUDY COMMENCEMENT Intersection Improvements Heart Lake Road and Countryside Drive Municipal Class Environmental Assessment Study

The Study

The City of Brampton has initiated a Schedule 'B' Class Environmental Assessment (Class EA) for improvements to the intersection of Heart Lake Road and Countryside Drive. The City identified the need for intersection improvements as part of an overall operational and safety improvement for the Heart Lake Road Corridor.

This Study will define the problem(s) with the intersection, identify and evaluate alternative solutions to the problem, evaluate alternative design concepts for the solution, and recommend a preferred design concept. Additionally, potential impacts to the social, cultural and natural environments will be assessed and mitigation measures will be determined.



The Process

This notice signals the commencement of the Municipal Class Environmental Assessment Study. The study is being undertaken in accordance with the planning and design process for Schedule "B" projects as outlined in the Municipal Class Environmental Assessment document (October 2000, as amended in 2007, 2011 and 2015), which is approved under the *Ontario Environmental Assessment Act*. The Study process includes:

- Identification of need and justification
- Evaluation of alternative solutions and design concepts
- Public and stakeholders consultation
- Assessment of environmental impacts and development of mitigation measures
- Finalization of preliminary design and identification of property requirements

Public and stakeholder consultation is a key element of the Class EA process. A Public Information Centre (PIC) will be held to present the project, review the study findings and discuss issues related to the project. Details regarding the forthcoming PIC will be advertised as the study progresses. At the conclusion of the study, the EA process will be documented in an Environmental Project Report (EPR) and will be made available for public review and comment.

Comments Invited

If you have any questions or comments regarding the Study or wish to be added to the Study mailing list, please contact either of the project team members:

Soheil Nejatian, P. Eng.

Project Engineer, Infrastructure Planning
Public Works and Engineering, City of Brampton
1975 Williams Parkway
Brampton ON L6S 6E5
Tel: 905-874-5909
Fax: 905.874.2505
TTY: 905.874.2130
Email: soheil.nejatian@brampton.ca

Dave Hallman, P.Eng.

Consultant Project Manager
MTE Consultants Inc.
520 Bingemans Centre Drive
Kitchener ON N2B 3X9
T: 905-639-2552 x 1336
F: 905-639-7727
Email: dhallman@mte85.com

For more information please visit: www.brampton.ca/Heartlake-Countryside-EA

Information will be collected in accordance with the Freedom of Information and Protection of Privacy Act. With the exception of personal information, all comments will become part of the public record.

This notice first issued on October 1, 2020.