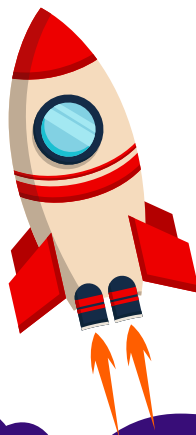
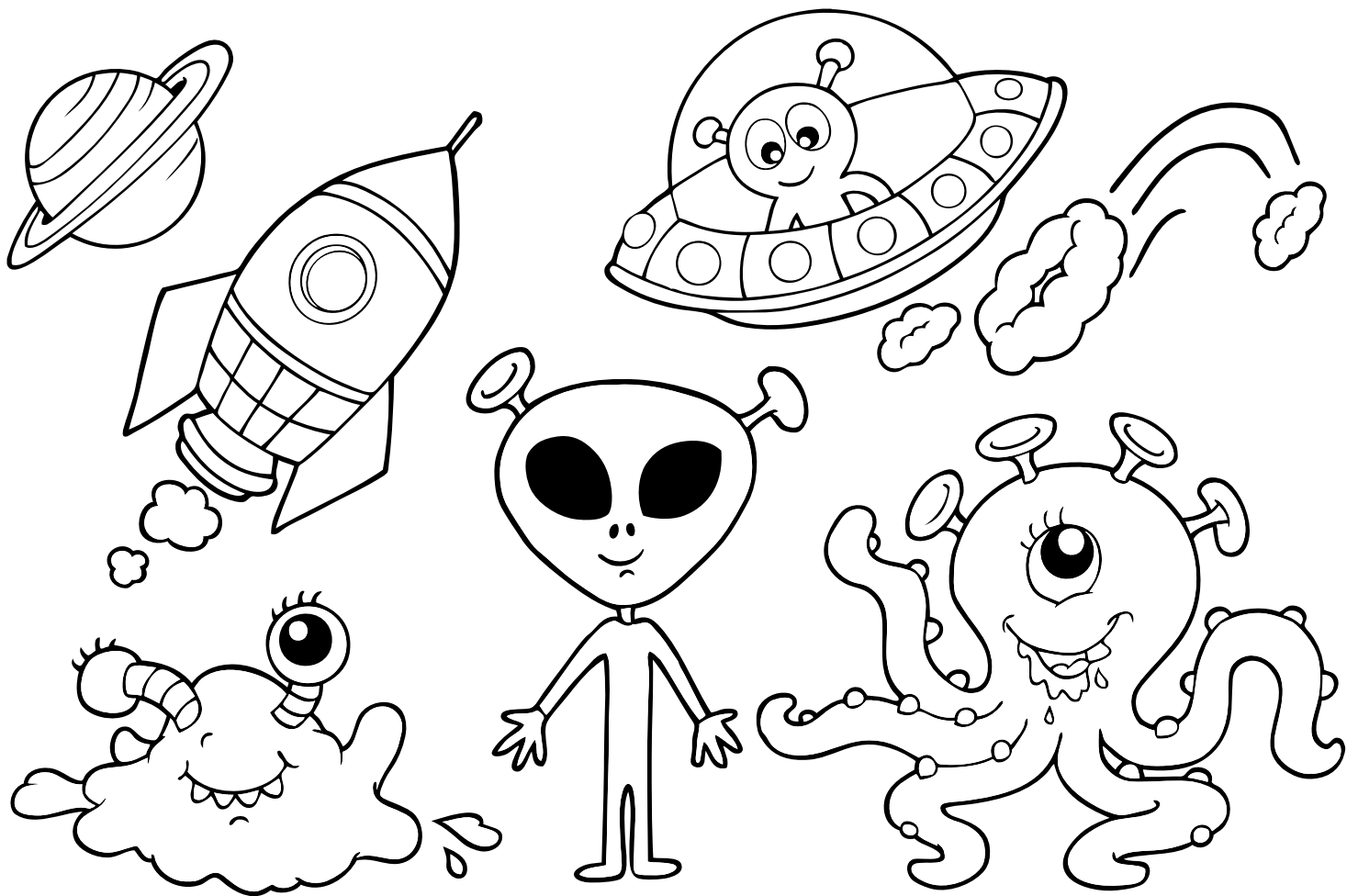


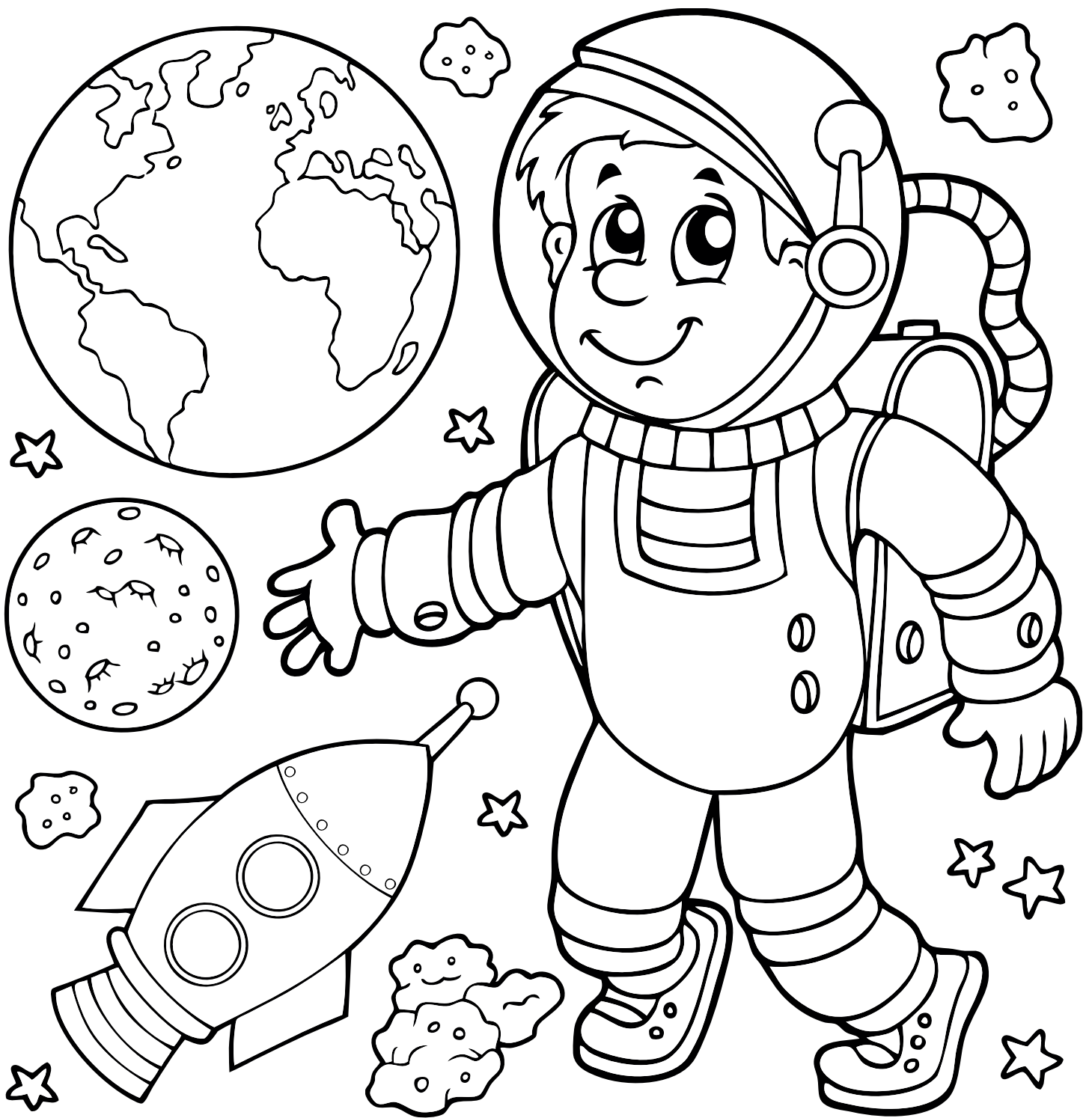
The cover features a white background with a dark purple, cloud-like border at the top and bottom. Scattered throughout are various celestial bodies: a large yellow moon with craters, a pink planet with white stripes, a blue planet with white stripes, and an orange planet with a ring. Several yellow stars of different sizes are also present. A rocket ship is shown launching from the bottom purple border.

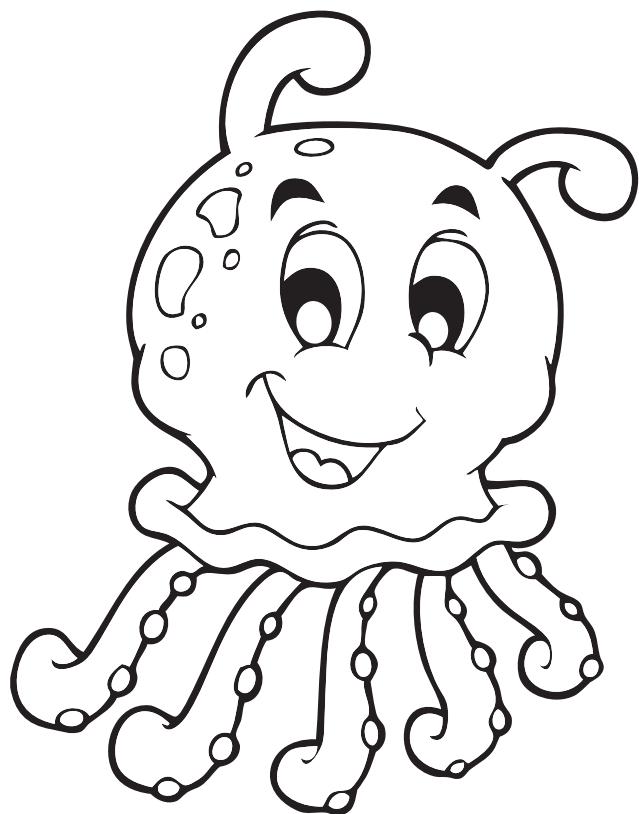
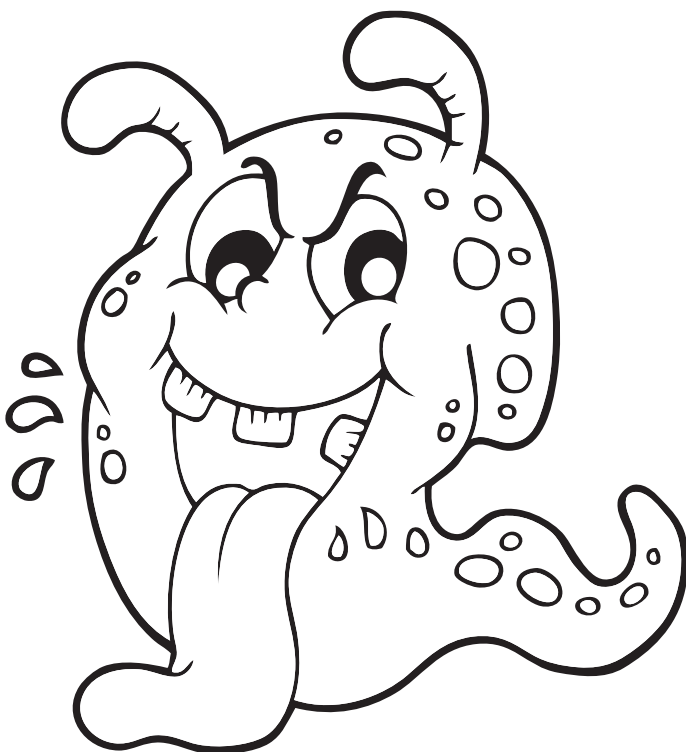
Galaxy and Outer Space

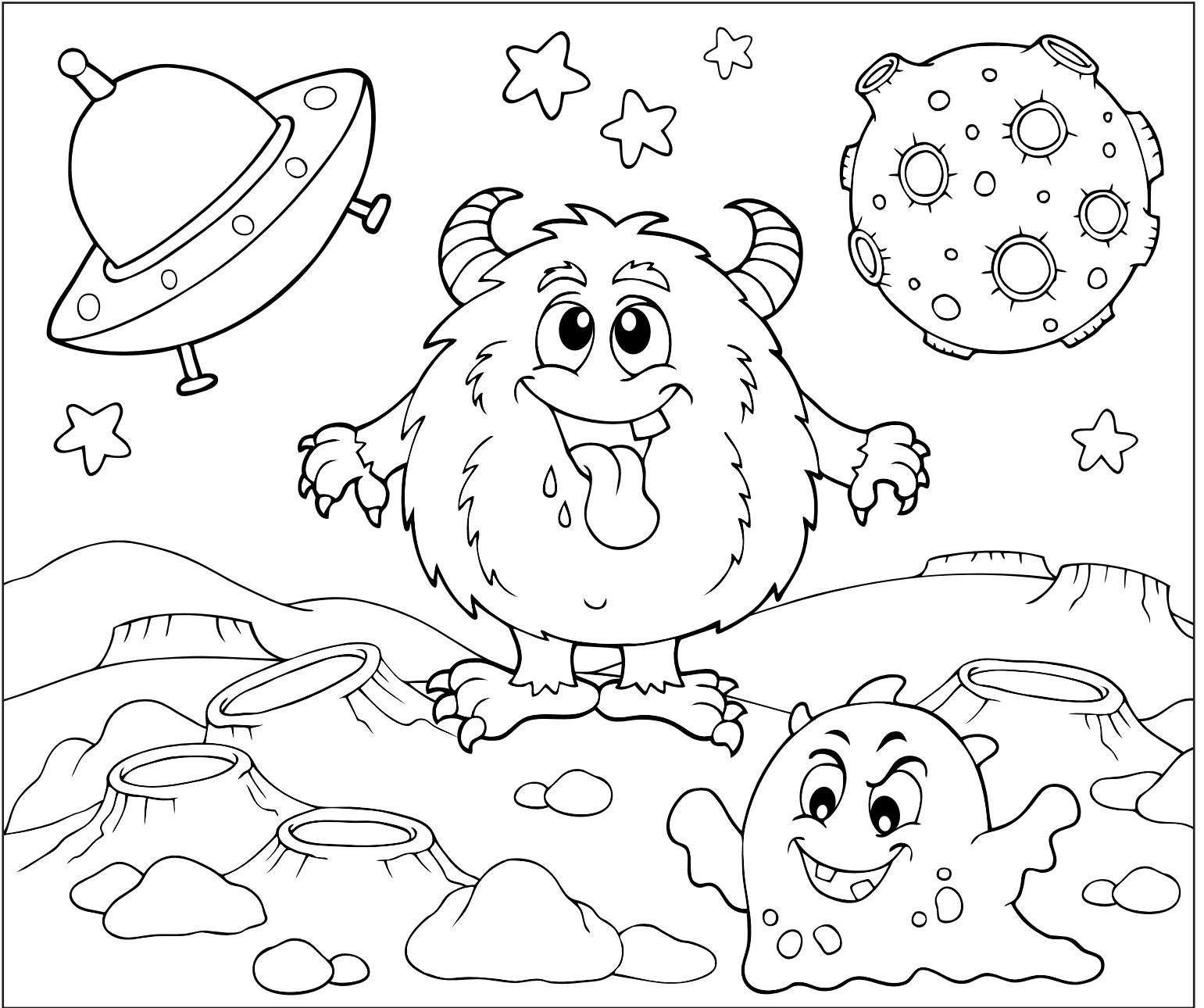
Colouring Pages and Activities

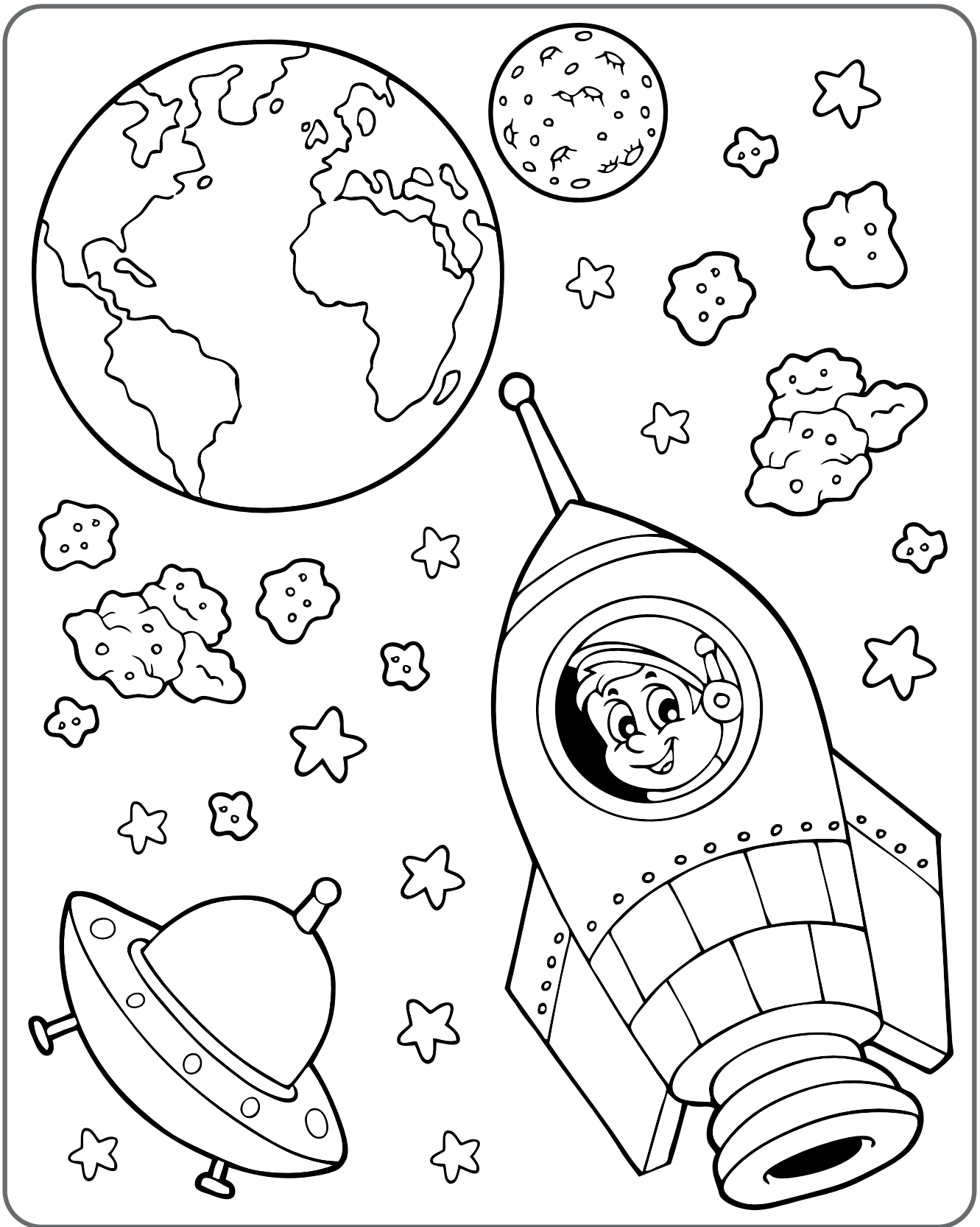


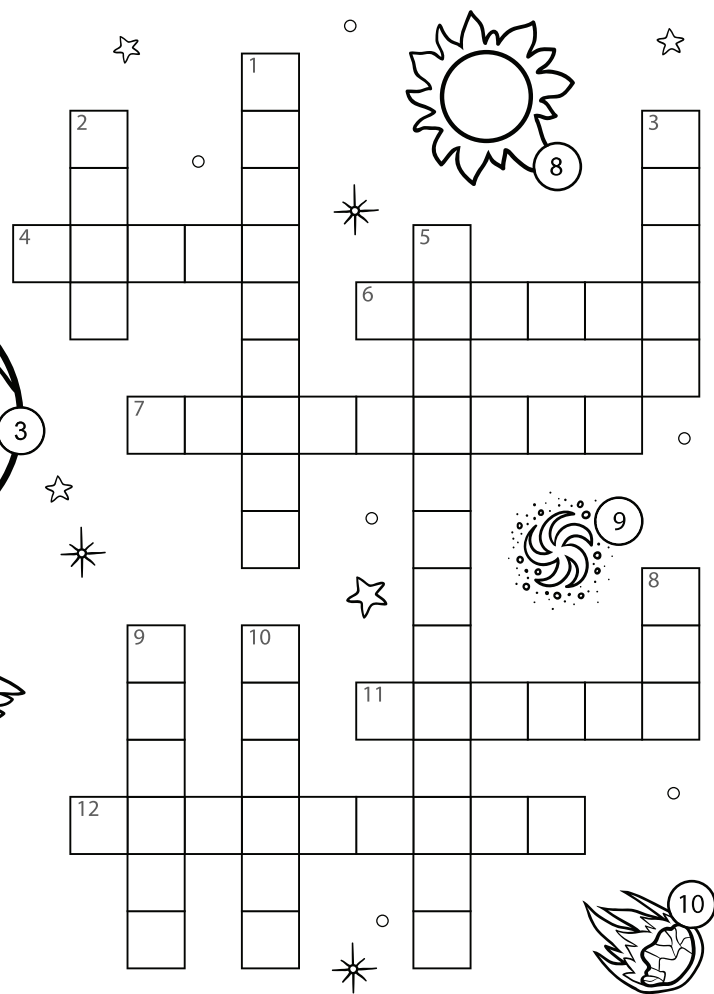
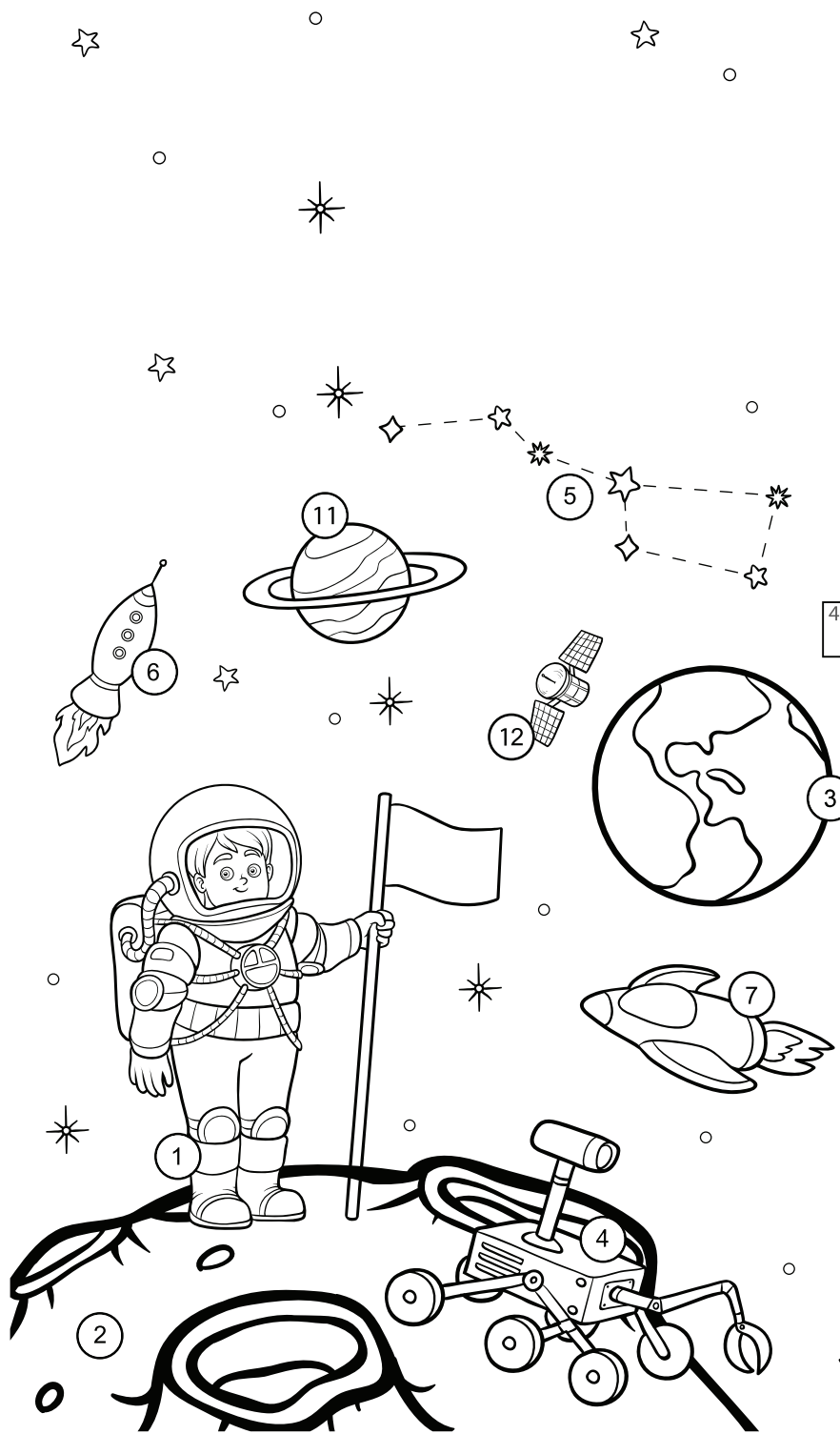






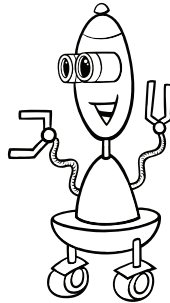
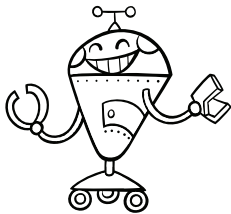
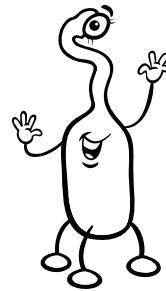
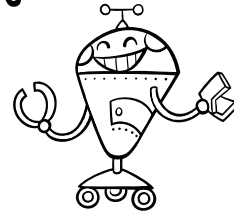
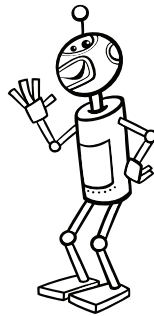
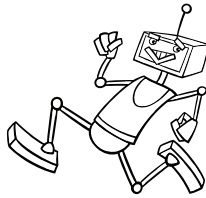
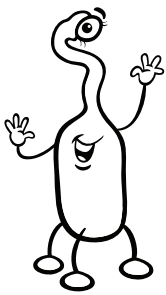
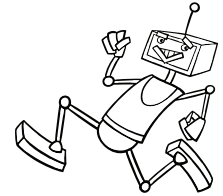
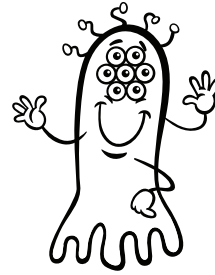
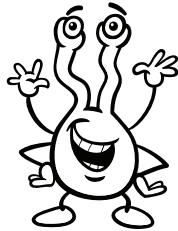
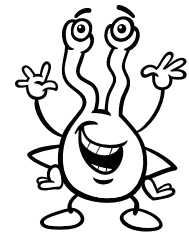
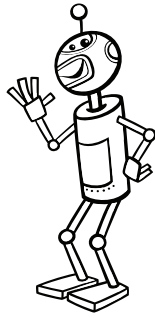
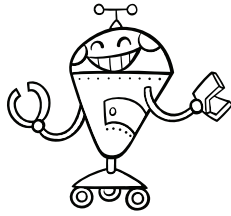






Answer
 ACROSS: 4. Rover 6. Rocket 7. Spaceship 11. Saturn 12. Satellite
 DOWN: 1. Astronaut 2. Moon 3. Earth 5. Constellation 8. Sun 9. Galaxy 10. Meteor





FIND
ONE
OF A KIND

