



## Overview

- The City of Brampton, in collaboration with the Toronto and Region Conservation Authority, is enhancing wetland habitat and connectivity along Etobicoke Creek, from Conservation Drive Park to Loafers Lake Park.
- Funding is supported by the Government of Ontario's *Wetland Conservation Partnership Program*. In March 2024, the City of Brampton was awarded \$2.5 million for the Etobicoke Creek Wetlands Enhancement Project.
- This project introduces several enhancements at Loafers Lake as outlined in Brampton's Lake Enhancement Strategy, including improved shoreline and wetland habitat, viewing platforms, a bio-swale, and trail realignment. Efforts will be made to plant native tree species and undertake grading improvements to enhance floodplain wetlands.
- Prioritizing wetland protection, enhancement, and restoration aligns with Brampton's Natural Heritage and Environmental Management Strategy (NHEMS), by offering vital services including flood control, water filtration, and wildlife habitat preservation.

## Project Need

- **Loafers Lake Site Conditions:**
  - Third worst water quality of all lakes in Brampton
  - Failing gabion baskets and eroding shoreline and trail
  - Invasive species dominance
  - Species at Risk like Snapping Turtles rely on the lake for habitat and food
- **Draft Etobicoke Creek Watershed Plan:** Loafers Lake is identified as one of the top 5 priority restoration sites in the Headwaters subwatershed
- **Wetland floodplain connectivity** opportunity from Conservation Dr. Park to Loafers Lake Park

## Project Objectives



**Enhance wetland ecosystems within Loafers Lake Park and Conservation Drive Park**



**Improve water quality along with aquatic and shoreline habitat at Loafers Lake**



**Take action against climate change and reduce flood risk**



**Increase community awareness of wetlands and provide stewardship opportunities within the project area**

# Wetlands: The Earth's Kidneys

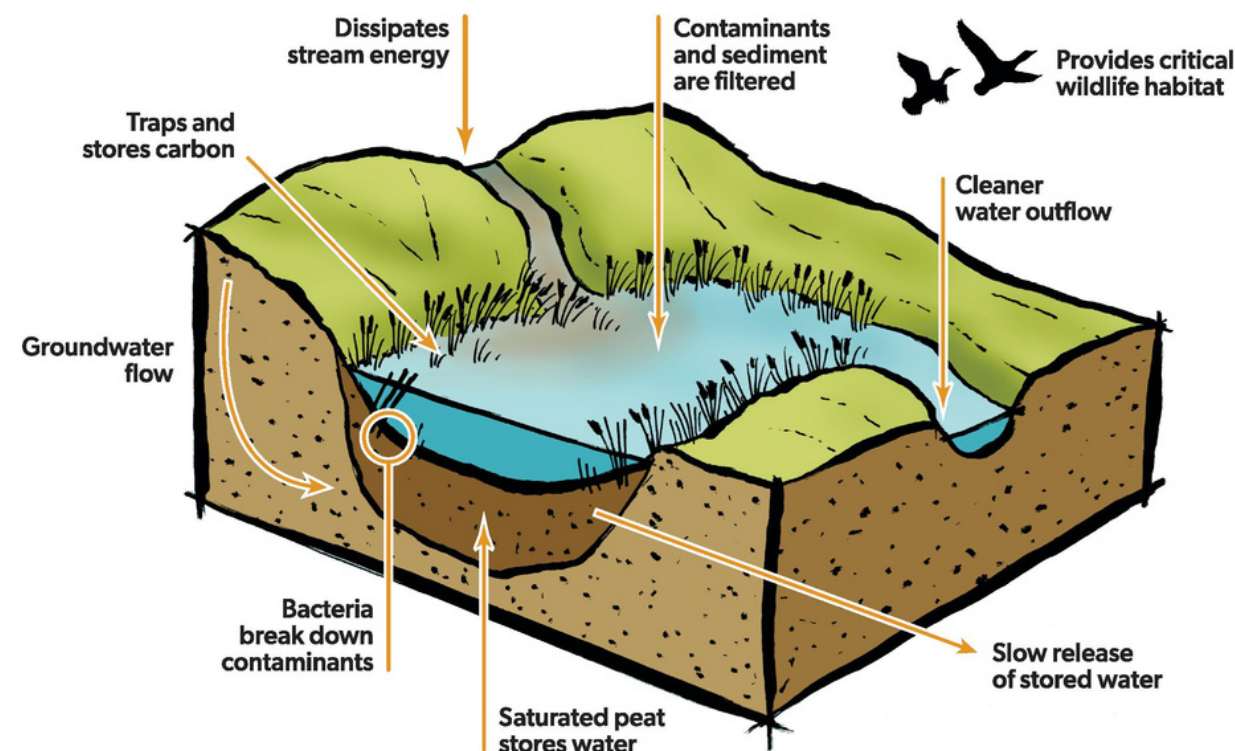


## What is a Wetland and how do they work?

Wetlands are areas that are seasonally or permanently covered by shallow water or have a water table close to the surface. A wetland can be a marsh, swamp, fen, or bog. By retaining water and releasing it slowly, wetlands help reduce flooding and facilitate groundwater recharge. The vegetation in this area is predominantly comprised of water-tolerant plants, indicating their adaptation to the abundant water conditions.

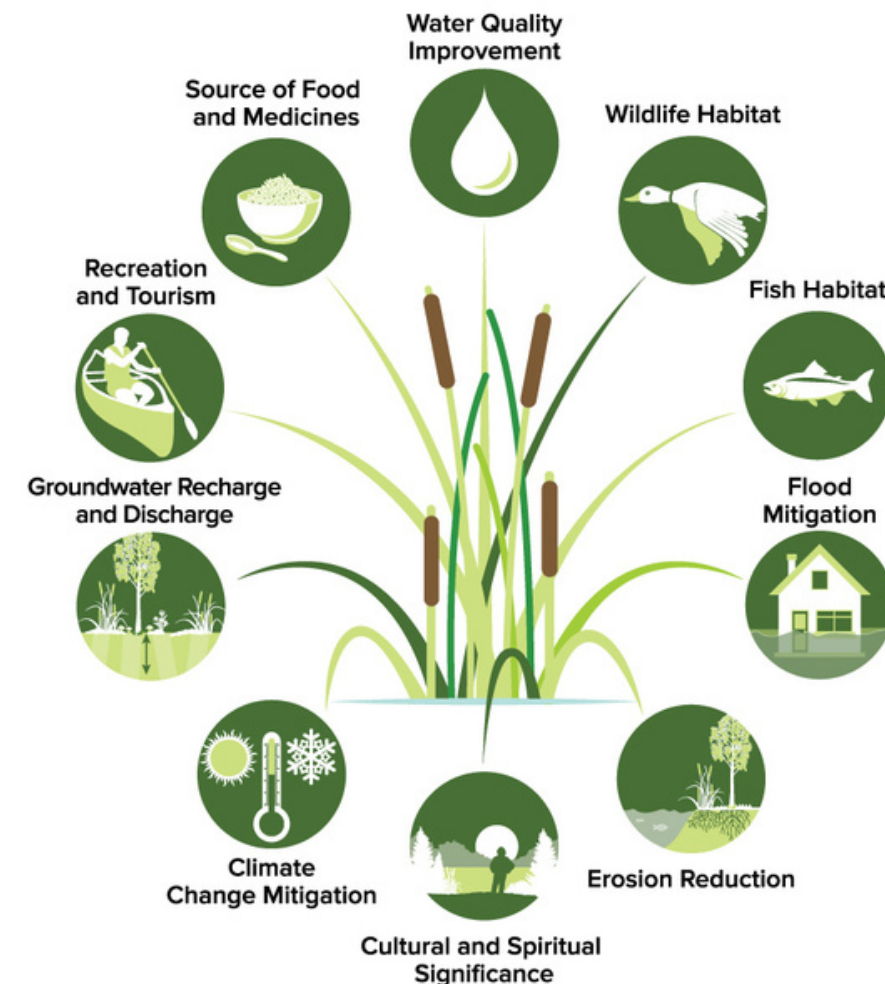
Wetlands serve as temporary storage and filtration systems for runoff water, ensuring it undergoes purification before flowing into watercourses. This process contributes to the creation of healthier and cleaner sources for our drinking water.

## Wetland Functions



Source: Ducks Unlimited Canada. *How Wetlands Work* [Graphic], [www.ducks.ca](http://www.ducks.ca).

## Wetland Functions



Source: Ontario Ministry of Natural Resources and Forestry. 2017. *A Wetland Conservation Strategy for Ontario 2017-2030. Wetland Benefits* [Graphic].

## Why are Wetlands so important?

Wetlands provide increased biodiversity and wildlife habitat. They also provide improved habitat connectivity, water quality, hydrologic function, base flow for watercourses, and recreational opportunities.

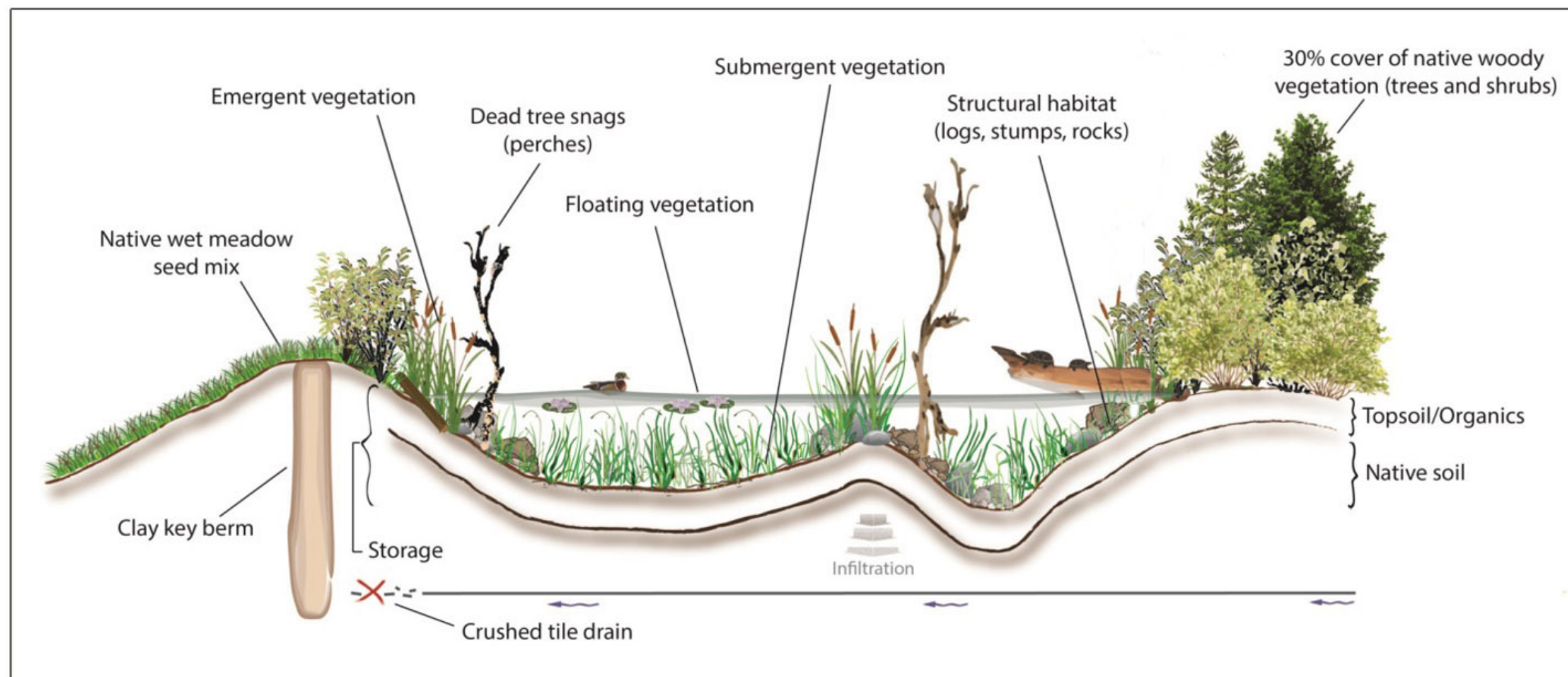
Wetlands are home to many native plant and animal species like Cattail, Cardinal Flower, Snapping Turtles, and Leopard Frogs.

# Why enhance existing wetlands?



Wetland restoration is crucial for watershed health and community well-being. Historically, southern Ontario boasted abundant wetlands, but urbanization and agriculture have depleted them significantly. Climate change amplifies threats with hotter, drier weather, and invasive species encroachment. This loss harms native wildlife, shrinking their habitats and populations.

## Wetland Restoration: Typical Cross Section



Source: TRCA, Wetland Typical :Cross Section [Graphic]. <https://trca.ca/conservation/restoration/wetlands/>

# PROJECT TIMELINE 2024



## April

- Detailed Design
- Lake Closure/Construction Staging
- Tree Removals

## September

- Construction
- Restoration Planting

## December

- Project Complete

## March

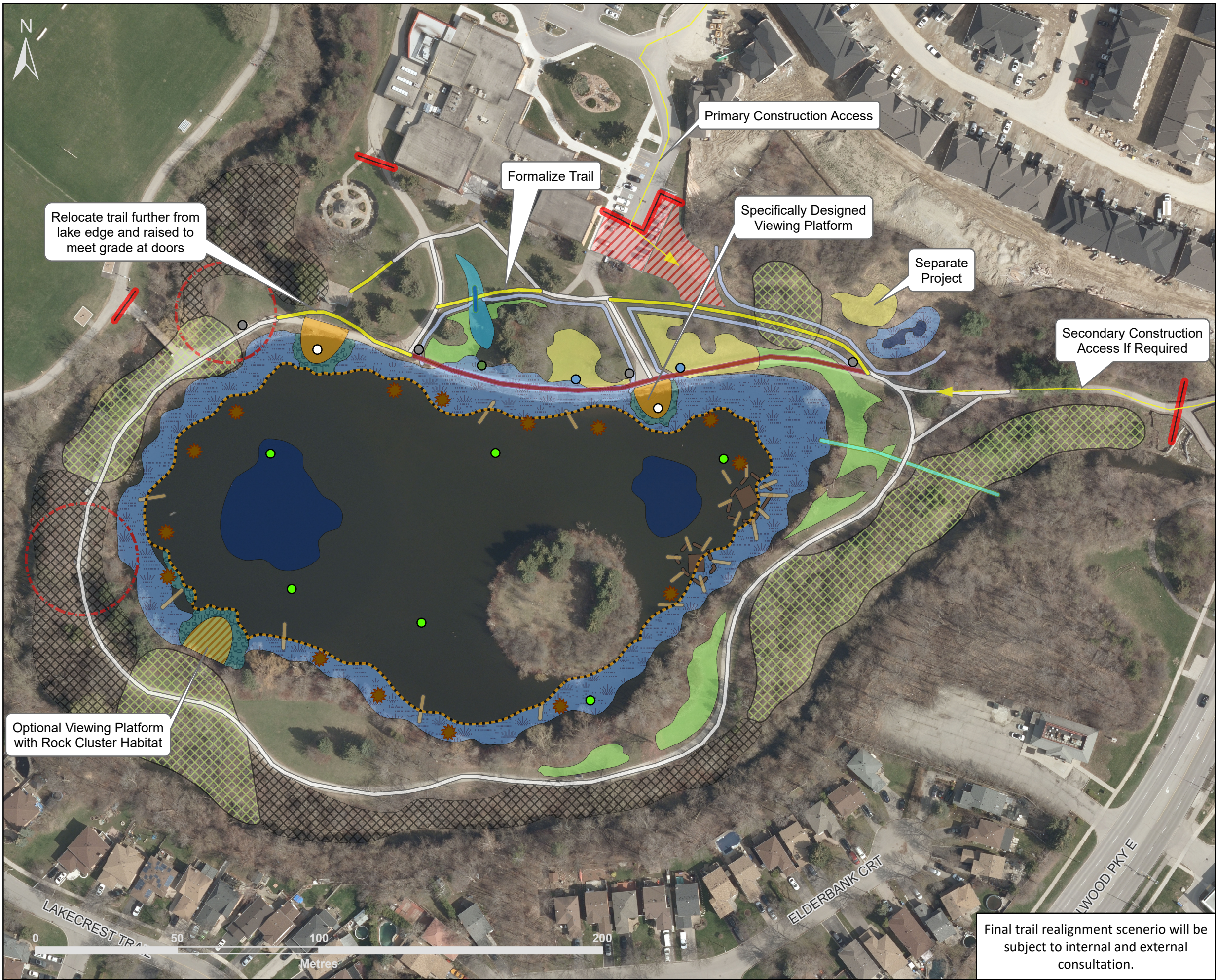
- Open House
- Permitting & Approvals
- Detailed Design

## May-August

- Construction

## October- November

- Construction  
Demobilization
- Community Planting  
Event
- Project Unveil



# Loafer's Lake Restoration Concept

\*Conceptual and for discussion purposes only\*  
February 2024

## Legend

- New Enhancement Features**
- Habitat Logs
  - Information Signage
  - New Trail (202m)
  - Trail Removal/Depaving (166m)
  - Control Structure Assessment/Retrofit
  - Basking Logs
  - Post and Paddle Fence (325m) - Placement to be determined
  - Floodplain Connection

- Bioswale Grading and Planting (0.02 ha)
- Naturalization Area (0.15 ha)
- Viewing Lookout
- Wetland - Deep Pocket
- Wetland - Shoreline Restoration Zone
- Rock Clusters
- Fish Cribs
- Anchored Logs
- Turtle Nesting Area (0.1ha)

- Optional Items**
- Optional Culvert
  - Eco Passage (10m)
  - Optional Alternate Viewing Lookout
  - Buckthorn Management & Understory Planting with Restoration (0.7 ha)
  - Future Buckthorn Removals (0.7 ha)

- Existing Features**
- Light Post to be Relocated
  - Memorial Tree to be Relocated
  - Memorial Bench to be Relocated
  - Watercourse (Etobicoke Creek)
  - Trails to Keep (165m)

- Temporary Construction Features**
- Erosion and Sediment Control
  - Access
  - Trail Closure
  - Staging & Access Area

Created by: Restoration and Infrastructure  
Date: 3/8/2024  
Orthophoto: MNRF, 2022



Final trail realignment scenerio will be subject to internal and external consultation.



# Loafers Lake Renderings



## Loafers Lake - Today



Eroded Shoreline and Failing Gabion Baskets



Informal Lookout Areas, Low Tree Canopy, Mancured Grass



Sloped Hill, Informal Path, Minimal Native Plants

## Loafers Lake - Future Concepts



Restored Shoreline, Emergent and Submergent Wetland Zones, Trail Relocated North



New Lookout Node, Naturalized Areas and Fencing, Native Plantings, Information Signage



Bio-swale Planted with Native Plants, Post and Paddle Fencing, Formalized Path

*\*All artistic renderings are for conceptual purposes only and may vary upon construction*

# RENDERINGS & CONCEPT EXAMPLES



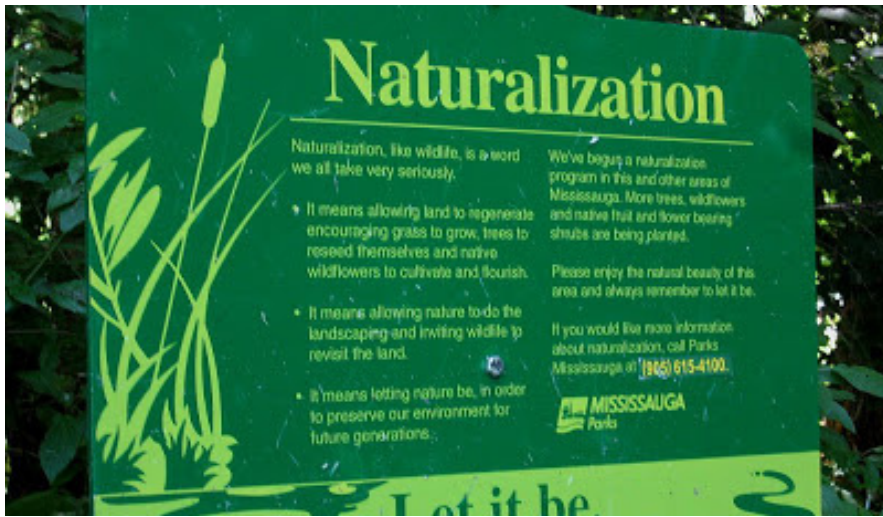
Interpretive Signage



Bio-swale



Post & Paddle Fencing



Lookout Node



# PROJECT EXAMPLE: TRCA Heart Lake Shoreline Restoration Project



## Heart Lake Conservation Area - Before



Degraded Shoreline



Degraded Shoreline



Failing Gabion Baskets



Degraded Shoreline

## Heart Lake Conservation Area - After



Restored Shoreline



New Lookout



Restored Shoreline



Restored Shoreline






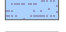







# Loafer's Lake Park Wetlands

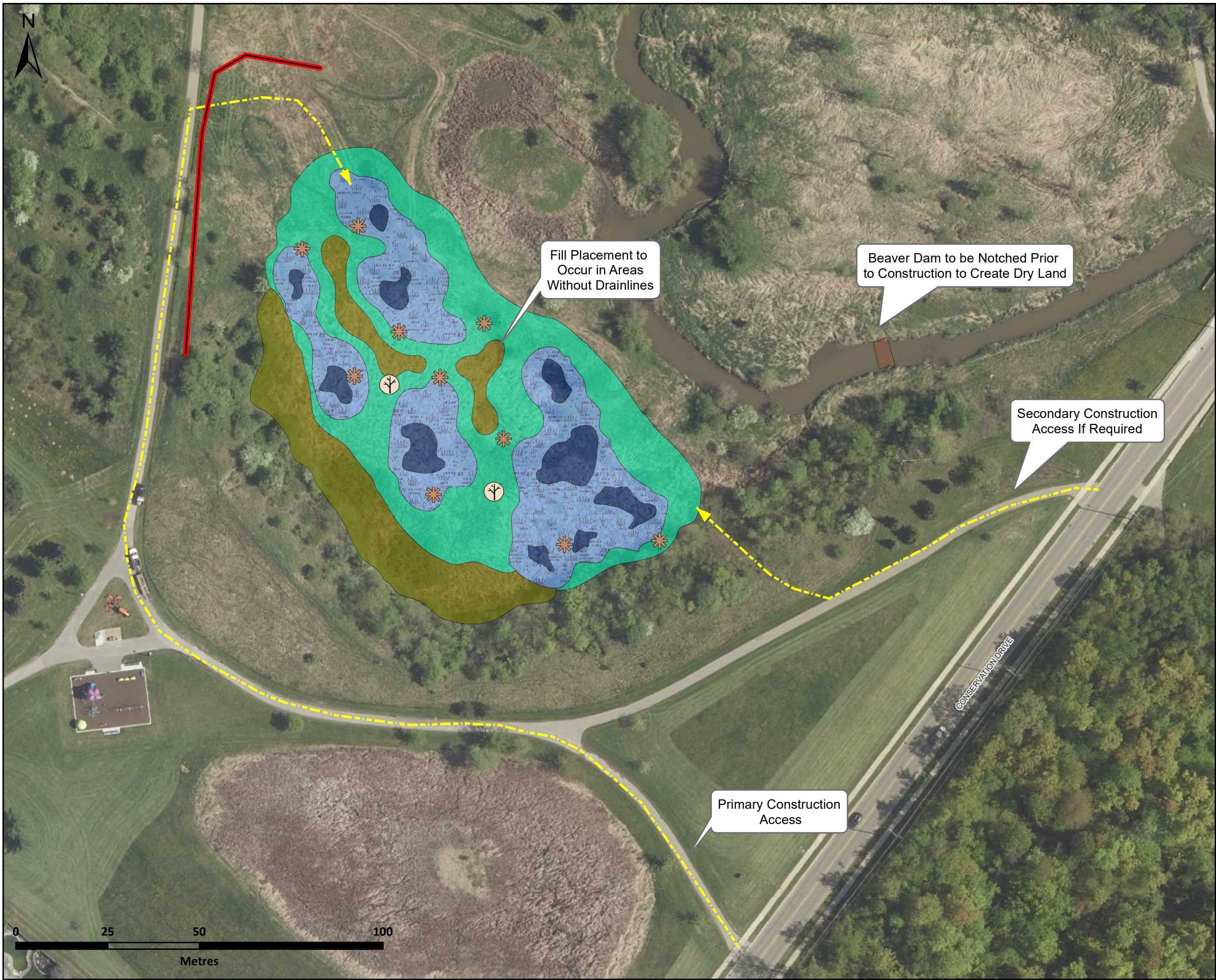
Restoration Plan  
Brampton

## Legend

-  Watercourse
-  Silt Sock (242 m)
-  Access
-  Fast Fence (335 m)
-  Shrub Node (0.05 ha)
-  Wetland - Emergent Zone (0.3 ha)
-  Wetland - Deep Pocket (0.1 ha)
-  Wetland - Tree and Shrub (0.3 ha)
-  Berm

Date: 3/7/2024  
Created by: Restoration and Infrastructure  
Orthophoto: MNRF, 2021





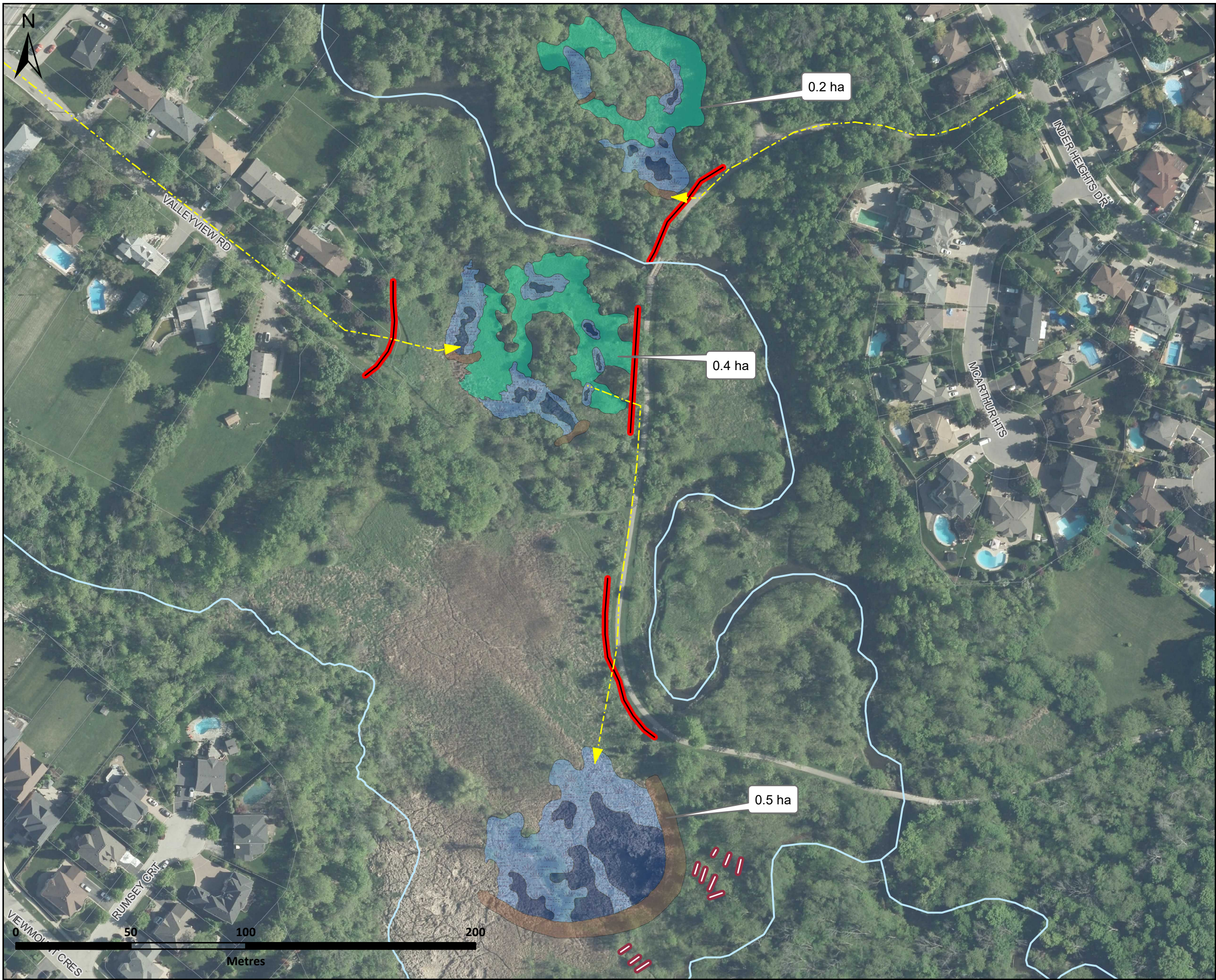
# Conservation Drive Park West Floodplain Wetland

Conservation Drive West  
Brampton

- Legend
- Access
  - Fast Fence (110m)
  - Restoration Opportunity**
  - Log Tangle
  - Perch Pole
  - Fill Placement and Planting Node (0.19 ha)
  - Wetland - Deep Pocket (0.06 ha)
  - Wetland - Emergent Zone (0.29 ha)
  - Wetland - Tree and Shrub (0.38 ha)
  - Beaver Dam

Date: 3/7/2024  
 Created by: Restoration and Infrastructure  
 Orthophoto: MNR, 2019





# Conservation Drive Park North (Snelgrove)

GIS Request  
EC - Brampton

Wetland Restoration: 1.1 ha

### Legend

- Watercourse
- - - Access
- Check Dam (50 m)
- Fast Fence (230 m)
- Parcel Boundary
- Wetland - Deep Pocket (0.2 ha)
- Wetland - Emergent Zone (0.4 ha)
- Wetland - Tree and Shrub (0.4 ha)
- Berm (0.1 ha)

Date: 2/26/2024  
Created by: Restoration and Infrastructure  
Orthophoto: MNRF, 2020





### Construction Activities

- **Notice:** Residents abutting working areas will receive notice of project works by April via mail
- **Noise:** Working hours will be between 7am-5pm
- **Mobilization Activities:**
  - Set up perimeter construction fencing,
  - Erosion and sediment control fencing
  - Set up a staging area
  - Arrival of large trucks and equipment
- **Demobilization:** All equipment leaves the site

### Closures

- **Loafers Lake:** Most of Loafers Lake will be closed from April 1st - Fall 2024 during construction

### Trail Detours

- Detour route maps will be posted at all Loafers Lake access points and online at [brampton.ca/wetlands](http://brampton.ca/wetlands)

### Trees Removals, Protection & Plantings

- Invasive species like Buckthorn will be removed in select areas
- All trees that can be protected around Loafers Lake will be. Trees deemed in poor health or unavoidable will be removed to accommodate shoreline restoration
- The majority of trees removed will be repurposed and incorporated into our restoration work along the lake shoreline (e.g. turtle basking logs)
- Planting plan is in progress with over 6,500 trees, shrubs and aquatic plants to be planted

### Wildlife

- **Turtles:** TRCA, City Staff and the Heart Lake Turtle Troopers are working together to support the turtle population at Loafers Lake during the construction period
- **Bats & Birds:** Trees will only be removed during permitted periods

### Signage:

- Project information signage will be up for the full duration at all project activity areas

Post a sticky note with any comments, questions, or ideas.

Tell us your  
thoughts!

**WE NEED YOUR INPUT!**

**What do you  
think of the  
project concept  
design plans?**



Post a sticky note with any comments, questions, or ideas.

Tell us your thoughts!

# WE NEED YOUR INPUT!

## What would you like to see on project signs?



A large, empty rectangular box with rounded corners and a light green border, intended for users to post their comments, questions, or ideas.

## WHAT ELSE SHOULD WE KNOW?

Post a sticky note with any comments, questions, or ideas that you might have.



# PUBLIC EDUCATION & PARTICIPATION OPPORTUNITIES



## Project Updates and Wetland Info

Head to [Brampton.ca/wetlands](https://brampton.ca/wetlands) to learn more about the project and wetland ecology.

## Wetland Book Collection

Stop by Cyril Clark Library next to the Paul Palleschi Recreation Centre to find a book collection on wetlands! Scan the code to find the collection online.

## Wetland Story Walk

A Story Walk is a way for you to enjoy a walk and a story! You don't need to be there at a specific time and it is available all day during the project. Wetland Story Walks will be up in the coming weeks at Loafers Lake Park and Conservation Drive Park.

## Community Planting Event

We will be hosting 1 community planting event for the project at Conservation Drive Park later this year! Join the Grow Green Network to stay informed for event details.

## Heart Lake Turtle Troopers

Join the Heart Lake Turtle Troopers to support the protection and monitoring of the Brampton's local turtle population through a citizen science volunteer program.



Project Webpage



Brampton Library



Grow Green Network  
Sign-up



Heart Lake Turtle Troopers  
Webpage

SCAN HERE



# LET'S STAY IN TOUCH



## Have a question? Let's Connect!



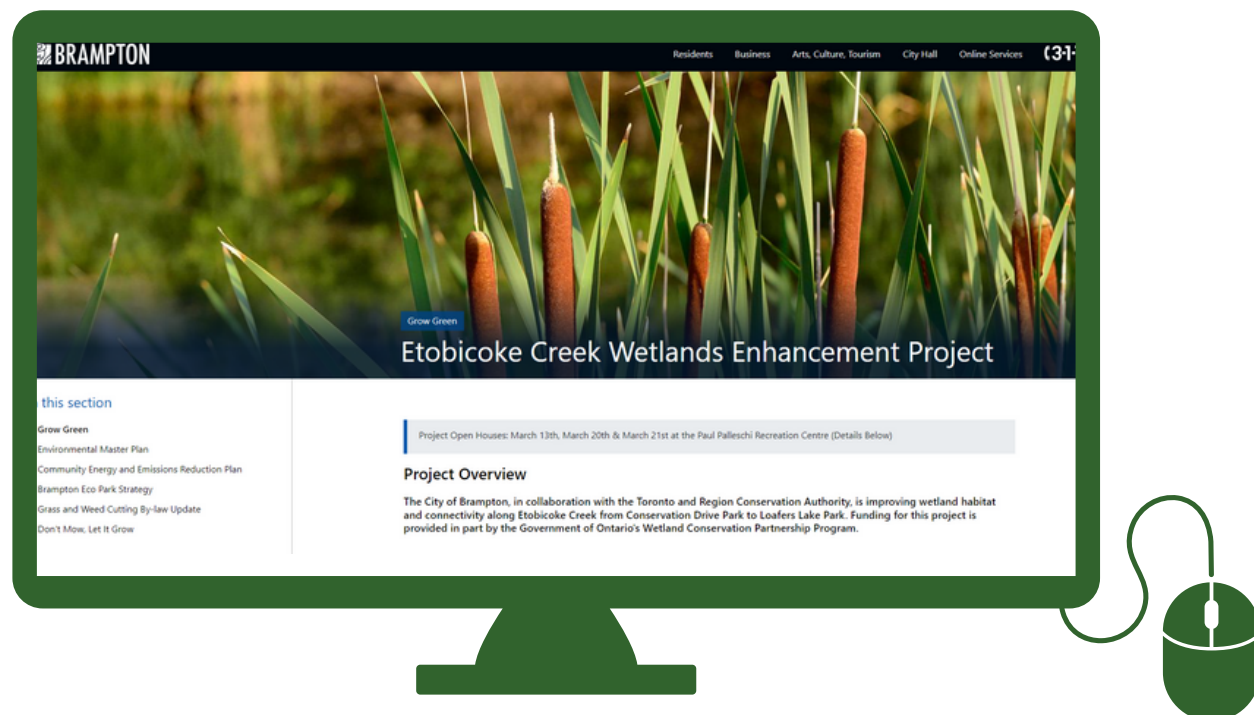
### Karley Cianchino

Environmental Project Specialist

Environment & Development Engineering

Email: [Karley.Cianchino@brampton.ca](mailto:Karley.Cianchino@brampton.ca)

Follow the project webpage at:  
[www.brampton.ca/wetlands](http://www.brampton.ca/wetlands)



## Follow @BramGrowGreen on social media for project updates

