



THE CORPORATION OF THE CITY OF BRAMPTON

# BY-LAW

Number 371-2009

To authorize the declaration of surplus  
and disposal of a permanent easement interest  
to Canada Post Corporation

**WHEREAS** the Council of The Corporation of the City of Brampton has determined that it is necessary and in the interest of the Corporation to declare surplus and dispose of a permanent easement interest, described herein, to provide an upgraded community mailbox pad in an Upscale Executive Special Policy Area development;

**NOW THEREFORE** The Council of The Corporation of the City of Brampton **ENACTS AS FOLLOWS:**

1. The Corporation of the City of Brampton is hereby authorized to make application to declare surplus a permanent easement interest over part of Block 185, Plan 43M-1778, City of Brampton, Regional Municipality of Peel, designated as Part 1 on Plan 43R-33010 and described in Schedule "A" to this by-law, for the installation, access, routine maintenance and repair of a community mailbox pad.
2. That the Mayor and Clerk are hereby authorized to execute an agreement of purchase and sale and any other related documents in a form approved by the City Solicitor that in his opinion are necessary in order to effect the disposal at nominal cost of the permanent easement interest to Canada Post Corporation,

**READ a FIRST, SECOND and THIRD TIME and PASSED** in open Council this 9<sup>th</sup> day of December 2009.

Approved  
as to form  
Law Dept.  
MK  
Nov 26 09

Approved  
as to content  
BPM Dept.  
[Signature]  
Nov 24 09

[Signature]  
SUSAN FENNELL MAYOR  
[Signature]  
PETER FAY CLERK

**Schedule "A"**  
**Part 1 on Plan 43R-33010**

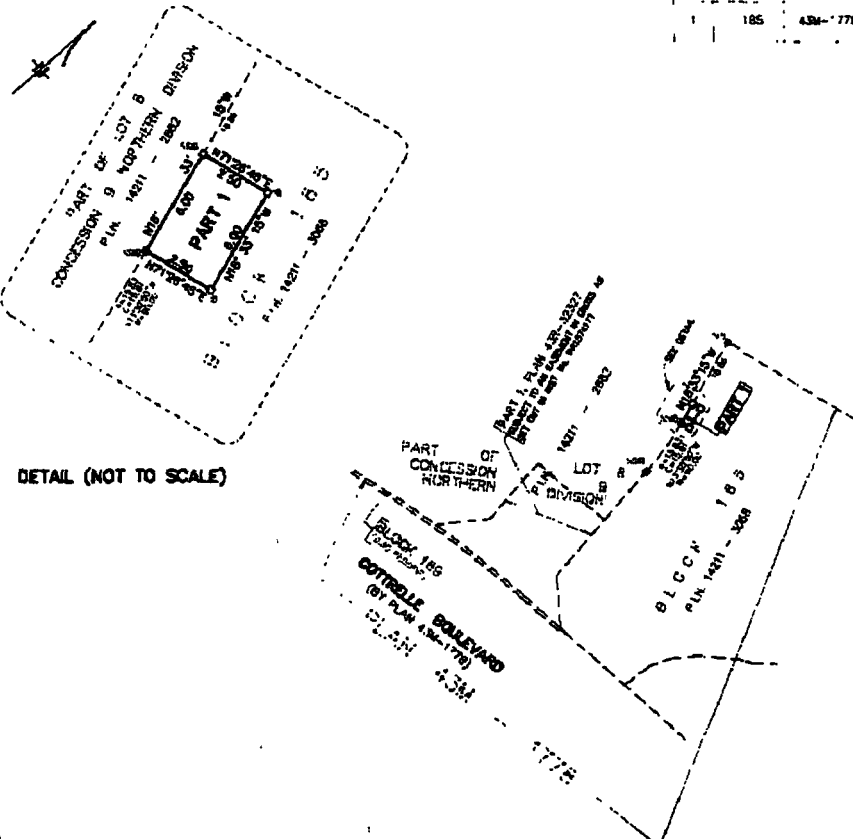
**PLAN OF SURVEY OF  
PART OF BLOCK 185  
PLAN 43M-1778  
CITY OF BRAMPTON  
REGIONAL MUNICIPALITY OF PEEL**

SCALE 1:1000  
RADI-PENTEK & EDWARD SURVEYING LTD., O.L.S.  
**METRIC**  
DISTANCES SHOWN ON THIS PLAN ARE IN METRES AND CAN  
BE CONVERTED TO FEET BY DIVIDING BY 0.3048

I REQUIRE THIS PLAN TO BE DEPOSITED  
UNDER THE LAND TILES ACT.  
DATE Oct 28<sup>th</sup> 2009  
*C.P.E.D.*  
C. P. EDWARD O.L.S.

**PLAN 43R-33010**  
RECEIVED AND DEPOSITED  
DATE October 28 2009  
*Mike Wake*  
ASST. DIR. LAND REGISTRAR FOR THE LAND  
TILES DIVISION OF PEEL (No.43)

SCHEDULE		
PART OF BLOCK	PLAN	PART OF P.L.A.
185	43M-1778	1421' 5068



DETAIL (NOT TO SCALE)

- NOTES**
- DENOTES MONUMENT FOUND
  - DENOTES MONUMENT SET
  - SIB DENOTES STANDARD IRON BAR
  - SSIB DENOTES SHORT STANDARD IRON BAR
  - IB DENOTES IRON BAR
  - P.I.N. DENOTES PROPERTY IDENTIFIER NUMBER

ALL FOUND MONUMENTS BY RADI-PENTEK & EDWARD SURVEYING LTD., O.L.S.

**BEARING NOTE**  
BEARINGS SHOWN HEREON ARE GRID AND ARE REFERRED TO THE WEST LIMIT OF BLOCK 185 AS SHOWN ON PLAN 43M-1778 HAVING A BEARING OF N78° 35' 15" E.

DISTANCES SHOWN HEREON ARE ADJUSTED GROUND DISTANCES AND CAN BE CONVERTED TO GRID DISTANCES BY MULTIPLYING BY A COMBINED SCALE FACTOR OF 0.99971

**SURVEYOR'S CERTIFICATE**  
I CERTIFY THAT:  
1 THIS SURVEY AND PLAN ARE CORRECT AND IN ACCORDANCE WITH THE SURVEYS ACT, THE SURVEYORS ACT AND THE LAND TILES ACT AND THE REGULATIONS MADE UNDER THEM  
2 THE SURVEY WAS COMPLETED ON THE 28<sup>th</sup> DAY OF Oct. 2009  
DATE Oct 28<sup>th</sup> 2009  
*C.P.E.D.*  
C. P. EDWARD  
ONTARIO LAND SURVEYOR

**rpe RADI-PENTEK & EDWARD SURVEYING LTD.**  
ONTARIO LAND SURVEYORS  
643 Christie Road, Suite 7  
Woodbridge, Ontario L4L 8A3  
Tel. (416) 635-5000 Fax (416) 635-5001  
Tel (905) 264-0881 Fax (905) 264-2099  
Website: www.r-pe.co  
DRAWN: C.D.S. CHECKED: C.P.E.  
JOB No. 07-151 CAD FILE No. 07151r03