



THE CORPORATION OF THE CITY OF BRAMPTON

BY-LAW

Number 138-97
To amend By-law 151-88, as amended.

The Council of the Corporation of the City of Brampton ENACTS as follow:

1. By-law 151-88, as specifically amended by by-law 22-95, is hereby further amended:
 - (1) by changing, on Sheet 27 of Schedule A thereto, the zoning designation of the lands shown outlined on Schedule A to this by-law from OS and R2A-Section 761 to R3B-SECTION 764 and R2B-Section 768.

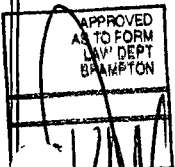
READ a FIRST, SECOND AND THIRD TIME, and PASSED, in
OPEN COUNCIL, this 9th day of June
1997.


PETER ROBERTSON- MAYOR


LEONARD J. MIKULICH- CITY CLERK

N.G

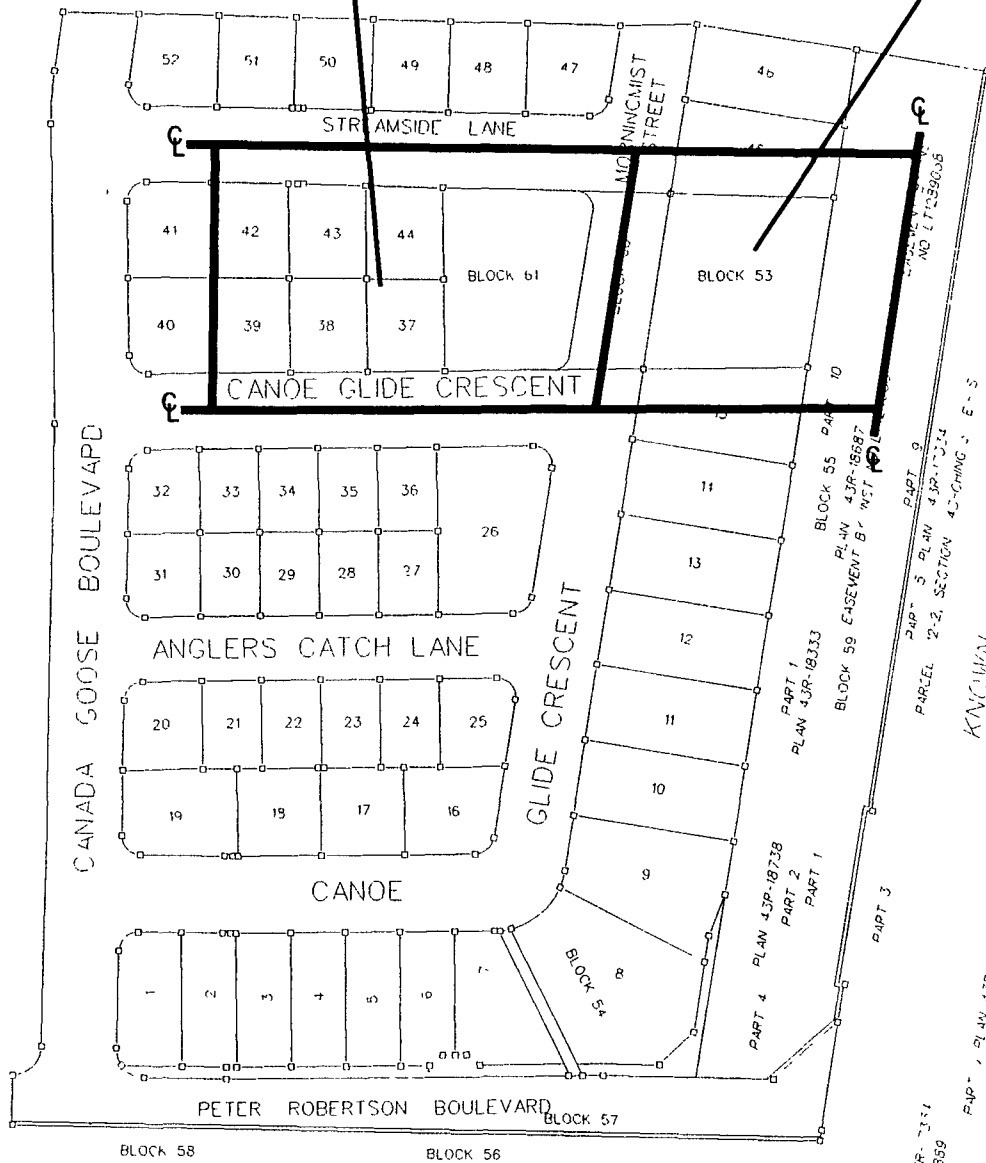
F:\BYLAWS\PARKETTE.DOC



R3B-SECTION 764

LOT 12, CONCESSION 3 EAST OF HURONTARIO STREET
 PART 1, PLAN 43R-2901
 PARCEL 12-1, SECTION 43-CHING-3 E.H.S.

R2B-SECTION 768



PART 1, PLAN 43R-16024
 PARCEL 11-1 SECTION 13-CHING-3 E.H.S.
 LOT 11, CONCESSION 3 EAST OF HURONTARIO STREET

PART 2
 PLAN 43R-18333
 PARCEL 12-4
 SECTION 43-CHING-3 E.H.S.

KNOWING IS DIXIE ROAD
 ROAD ALLOWANCE BETWEEN CONCESSION 3 - E.H.S. AND 1 - E.H.S.
 PARCEL 12-3
 SECTION 43-CHING-3 E.H.S.

PART 4
 PLAN 43R-17134

PART 5
 PLAN 43R-17134
 INCT NO 940859

PART 6
 PLAN 43R-17134
 INCT NO 940859

PART 7
 PLAN 43R-17134
 INCT NO 940859

PART 8
 PLAN 43R-17134
 INCT NO 940859

PART 9
 PLAN 43R-17134
 INCT NO 940859

PART 10
 PLAN 43R-17134
 INCT NO 940859

PART 11
 PLAN 43R-17134
 INCT NO 940859

PART 12
 PLAN 43R-17134
 INCT NO 940859

PART 13
 PLAN 43R-17134
 INCT NO 940859

PART 14
 PLAN 43R-17134
 INCT NO 940859

PART 15
 PLAN 43R-17134
 INCT NO 940859

PART 16
 PLAN 43R-17134
 INCT NO 940859

PART 17
 PLAN 43R-17134
 INCT NO 940859

PART 18
 PLAN 43R-17134
 INCT NO 940859

PART 19
 PLAN 43R-17134
 INCT NO 940859

PART 20
 PLAN 43R-17134
 INCT NO 940859

PART 21
 PLAN 43R-17134
 INCT NO 940859

PART 22
 PLAN 43R-17134
 INCT NO 940859

PART 23
 PLAN 43R-17134
 INCT NO 940859

PART 24
 PLAN 43R-17134
 INCT NO 940859

PART 25
 PLAN 43R-17134
 INCT NO 940859

PART 26
 PLAN 43R-17134
 INCT NO 940859

PART 27
 PLAN 43R-17134
 INCT NO 940859

PART 28
 PLAN 43R-17134
 INCT NO 940859

PART 29
 PLAN 43R-17134
 INCT NO 940859

PART 30
 PLAN 43R-17134
 INCT NO 940859

PART 31
 PLAN 43R-17134
 INCT NO 940859

PART 32
 PLAN 43R-17134
 INCT NO 940859

PART 33
 PLAN 43R-17134
 INCT NO 940859

PART 34
 PLAN 43R-17134
 INCT NO 940859

PART 35
 PLAN 43R-17134
 INCT NO 940859

PART 36
 PLAN 43R-17134
 INCT NO 940859

PART 37
 PLAN 43R-17134
 INCT NO 940859

PART 38
 PLAN 43R-17134
 INCT NO 940859

PART 39
 PLAN 43R-17134
 INCT NO 940859

PART 40
 PLAN 43R-17134
 INCT NO 940859

PART 41
 PLAN 43R-17134
 INCT NO 940859

PART 42
 PLAN 43R-17134
 INCT NO 940859

PART 43
 PLAN 43R-17134
 INCT NO 940859

PART 44
 PLAN 43R-17134
 INCT NO 940859

PART 45
 PLAN 43R-17134
 INCT NO 940859

PART 46
 PLAN 43R-17134
 INCT NO 940859

PART 47
 PLAN 43R-17134
 INCT NO 940859

PART 48
 PLAN 43R-17134
 INCT NO 940859

PART 49
 PLAN 43R-17134
 INCT NO 940859

PART 50
 PLAN 43R-17134
 INCT NO 940859

PART 51
 PLAN 43R-17134
 INCT NO 940859

PART 52
 PLAN 43R-17134
 INCT NO 940859

PART 53
 PLAN 43R-17134
 INCT NO 940859

PART 54
 PLAN 43R-17134
 INCT NO 940859

PART 55
 PLAN 43R-17134
 INCT NO 940859

PART 56
 PLAN 43R-17134
 INCT NO 940859

PART 57
 PLAN 43R-17134
 INCT NO 940859

PART 58
 PLAN 43R-17134
 INCT NO 940859

PART 59
 PLAN 43R-17134
 INCT NO 940859

PART 60
 PLAN 43R-17134
 INCT NO 940859

PART 61
 PLAN 43R-17134
 INCT NO 940859

PART 62
 PLAN 43R-17134
 INCT NO 940859

PART 63
 PLAN 43R-17134
 INCT NO 940859

PART 64
 PLAN 43R-17134
 INCT NO 940859

PART 65
 PLAN 43R-17134
 INCT NO 940859

PART 66
 PLAN 43R-17134
 INCT NO 940859

PART 67
 PLAN 43R-17134
 INCT NO 940859

PART 68
 PLAN 43R-17134
 INCT NO 940859

PART 69
 PLAN 43R-17134
 INCT NO 940859

PART 70
 PLAN 43R-17134
 INCT NO 940859

PART 71
 PLAN 43R-17134
 INCT NO 940859

PART 72
 PLAN 43R-17134
 INCT NO 940859

PART 73
 PLAN 43R-17134
 INCT NO 940859

PART 74
 PLAN 43R-17134
 INCT NO 940859

PART 75
 PLAN 43R-17134
 INCT NO 940859

PART 76
 PLAN 43R-17134
 INCT NO 940859

PART 77
 PLAN 43R-17134
 INCT NO 940859

PART 78
 PLAN 43R-17134
 INCT NO 940859

PART 79
 PLAN 43R-17134
 INCT NO 940859

PART 80
 PLAN 43R-17134
 INCT NO 940859

PART 81
 PLAN 43R-17134
 INCT NO 940859

PART 82
 PLAN 43R-17134
 INCT NO 940859

PART 83
 PLAN 43R-17134
 INCT NO 940859

PART 84
 PLAN 43R-17134
 INCT NO 940859

PART 85
 PLAN 43R-17134
 INCT NO 940859

PART 86
 PLAN 43R-17134
 INCT NO 940859

PART 87
 PLAN 43R-17134
 INCT NO 940859

PART 88
 PLAN 43R-17134
 INCT NO 940859

PART 89
 PLAN 43R-17134
 INCT NO 940859

PART 90
 PLAN 43R-17134
 INCT NO 940859

PART 91
 PLAN 43R-17134
 INCT NO 940859

PART 92
 PLAN 43R-17134
 INCT NO 940859

PART 93
 PLAN 43R-17134
 INCT NO 940859

PART 94
 PLAN 43R-17134
 INCT NO 940859

PART 95
 PLAN 43R-17134
 INCT NO 940859

PART 96
 PLAN 43R-17134
 INCT NO 940859




PART 97
 PLAN 43R-17134
 INCT NO 940859

PART 98
 PLAN 43R-17134
 INCT NO 940859

PART 99
 PLAN 43R-17134
 INCT NO 940859

PART 100
 PLAN 43R-17134
 INCT NO 940859

LEGEND

-  ZONE BOUNDARY
-  CENTRELINE OF ORIGINAL ROAD ALLOWANCE
-  METRES

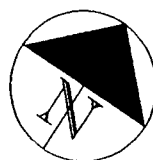
PART LOT 12, CONCESSION 3 E.H.S.

BY-LAW _____

SCHEDULE A

By-Law 138-97

Schedule A



CITY OF BRAMPTON

Planning and Building

Date: 1997 05 23

Drawn by: CJK

File no. C3E12 6

Map no. 27-13D

HEART LAKE ROAD

SANDALWOOD PARKWAY EXTENSION

DIXIE ROAD

CHIPMUNK

CR

BLA

BLUE SPR

RANGELAND

SOFTNE

SECT

AV

FERN

CR

M

VALLEY

SUBJECT PROPERTY

BOVAIRD DRIVE

NEVILLE

MA



NEW NORSE NIPIC

Key Map By-Law 138-97



CITY OF BRAMPTON
Planning and Building

Date: 1997 05 20

Drawn by: CJK

File no. C3E12.3

Map no. 27-10L