



THE CORPORATION OF THE CITY OF BRAMPTON

# BY-LAW

Number 131-2013

To accept and assume works in  
Registered Plan 43M-1630

**WHEREAS** the Council of The Corporation of the City of Brampton has, by resolution, decided that all works constructed and installed in accordance with the subdivision agreement for Registered Plan 43M-1630 be accepted and assumed;

**AND WHEREAS** Council has authorized the City Treasurer to reduce the securities held by the City in connection with the Subdivision to \$20,000.00, which is to be retained for miscellaneous repairs;

**AND WHEREAS** it is deemed expedient to accept and assume the streets on Registered Plan 43M-1630 as part of the public highway system.

**NOW THEREFORE** the Council of The Corporation of the City of Brampton hereby **ENACTS** as follows:

1. All of the works constructed and installed in accordance with the subdivision agreement for Registered Plan 43M-1630 are hereby accepted and assumed.
2. The lands described in Schedule A to this by-law are hereby accepted and assumed as part of the public highway system of the City of Brampton.

**READ a FIRST, SECOND, AND THIRD TIME and PASSED** in Open Council this 22nd day of May, 2013.

Approved as to  
form.  
3/5/13  
CG

Approved as to  
content.  
30 APR 2013  
[Signature]

[Signature]  
Susan Fennell, Mayor

[Signature]  
Peter Fay, City Clerk

**SCHEDULE A TO BY-LAW NO. 131-2013**

**REGISTERED PLAN 43M-1630**

Laurentide Crescent, Saint Hubert Drive, Billancourt Crescent, Belleville Drive,  
Sorbonne Drive, Monabelle Crescent, Riva Ridge Drive, Mount Royal Circle and  
Maisonneuve Boulevard

City of Brampton  
Regional Municipality of Peel

METRIC DISTANCES SHOWN ON THIS PLAN ARE IN METRES AND CAN BE CONVERTED TO FEET BY DIVIDING BY 0.3048.

PLAN 43M-1630

I CERTIFY THAT THIS PLAN IS REGISTERED IN THE LAND REGISTRY OFFICE FOR THE LAND TITLES DIVISION OF PEEL No. 43 AT 12.22 O'CLOCK ON THE 7 DAY OF MAY 2008 AND ENTERED IN THE PARCEL REGISTER FOR PROPERTY IDENTIFIER No. L2379-9147 AND THE REFERENCED CONVEYS ARE REGISTERED AS PLAN DOCUMENT NO. 43M-1630.

L. Christie  
Asst. Dir. Land Registry

NOTE: THIS PLAN COMPLETES ALL OF THE PLAN 43M-1601.

PLAN OF SUBDIVISION OF PART OF THE EAST HALF OF LOT 17, CONCESSION 7, NORTHERN DIVISION (DEFORMING SURVEY OF TOWNSHIP ROSS, COUNTY OF PEEL) NOW IN THE CITY OF BRAMPTON REGIONAL MUNICIPALITY OF PEEL SCALE 81000

SCHAEFFER & OZALDOV LIMITED

NOTES

- 1. PLANTING STAMPS AND SIGN
- 2. PLANTING STAMPS AND SIGN
- 3. PLANTING STAMPS AND SIGN
- 4. PLANTING STAMPS AND SIGN
- 5. PLANTING STAMPS AND SIGN
- 6. PLANTING STAMPS AND SIGN
- 7. PLANTING STAMPS AND SIGN
- 8. PLANTING STAMPS AND SIGN
- 9. PLANTING STAMPS AND SIGN
- 10. PLANTING STAMPS AND SIGN
- 11. PLANTING STAMPS AND SIGN
- 12. PLANTING STAMPS AND SIGN
- 13. PLANTING STAMPS AND SIGN
- 14. PLANTING STAMPS AND SIGN
- 15. PLANTING STAMPS AND SIGN
- 16. PLANTING STAMPS AND SIGN
- 17. PLANTING STAMPS AND SIGN
- 18. PLANTING STAMPS AND SIGN
- 19. PLANTING STAMPS AND SIGN
- 20. PLANTING STAMPS AND SIGN
- 21. PLANTING STAMPS AND SIGN
- 22. PLANTING STAMPS AND SIGN
- 23. PLANTING STAMPS AND SIGN
- 24. PLANTING STAMPS AND SIGN
- 25. PLANTING STAMPS AND SIGN
- 26. PLANTING STAMPS AND SIGN
- 27. PLANTING STAMPS AND SIGN
- 28. PLANTING STAMPS AND SIGN
- 29. PLANTING STAMPS AND SIGN
- 30. PLANTING STAMPS AND SIGN
- 31. PLANTING STAMPS AND SIGN
- 32. PLANTING STAMPS AND SIGN
- 33. PLANTING STAMPS AND SIGN
- 34. PLANTING STAMPS AND SIGN
- 35. PLANTING STAMPS AND SIGN
- 36. PLANTING STAMPS AND SIGN
- 37. PLANTING STAMPS AND SIGN
- 38. PLANTING STAMPS AND SIGN
- 39. PLANTING STAMPS AND SIGN
- 40. PLANTING STAMPS AND SIGN
- 41. PLANTING STAMPS AND SIGN
- 42. PLANTING STAMPS AND SIGN
- 43. PLANTING STAMPS AND SIGN
- 44. PLANTING STAMPS AND SIGN
- 45. PLANTING STAMPS AND SIGN
- 46. PLANTING STAMPS AND SIGN
- 47. PLANTING STAMPS AND SIGN
- 48. PLANTING STAMPS AND SIGN
- 49. PLANTING STAMPS AND SIGN
- 50. PLANTING STAMPS AND SIGN
- 51. PLANTING STAMPS AND SIGN
- 52. PLANTING STAMPS AND SIGN
- 53. PLANTING STAMPS AND SIGN
- 54. PLANTING STAMPS AND SIGN
- 55. PLANTING STAMPS AND SIGN
- 56. PLANTING STAMPS AND SIGN
- 57. PLANTING STAMPS AND SIGN
- 58. PLANTING STAMPS AND SIGN
- 59. PLANTING STAMPS AND SIGN
- 60. PLANTING STAMPS AND SIGN
- 61. PLANTING STAMPS AND SIGN
- 62. PLANTING STAMPS AND SIGN
- 63. PLANTING STAMPS AND SIGN
- 64. PLANTING STAMPS AND SIGN
- 65. PLANTING STAMPS AND SIGN
- 66. PLANTING STAMPS AND SIGN
- 67. PLANTING STAMPS AND SIGN
- 68. PLANTING STAMPS AND SIGN
- 69. PLANTING STAMPS AND SIGN
- 70. PLANTING STAMPS AND SIGN
- 71. PLANTING STAMPS AND SIGN
- 72. PLANTING STAMPS AND SIGN
- 73. PLANTING STAMPS AND SIGN
- 74. PLANTING STAMPS AND SIGN
- 75. PLANTING STAMPS AND SIGN
- 76. PLANTING STAMPS AND SIGN
- 77. PLANTING STAMPS AND SIGN
- 78. PLANTING STAMPS AND SIGN
- 79. PLANTING STAMPS AND SIGN
- 80. PLANTING STAMPS AND SIGN
- 81. PLANTING STAMPS AND SIGN
- 82. PLANTING STAMPS AND SIGN
- 83. PLANTING STAMPS AND SIGN
- 84. PLANTING STAMPS AND SIGN
- 85. PLANTING STAMPS AND SIGN
- 86. PLANTING STAMPS AND SIGN
- 87. PLANTING STAMPS AND SIGN
- 88. PLANTING STAMPS AND SIGN
- 89. PLANTING STAMPS AND SIGN
- 90. PLANTING STAMPS AND SIGN
- 91. PLANTING STAMPS AND SIGN
- 92. PLANTING STAMPS AND SIGN
- 93. PLANTING STAMPS AND SIGN
- 94. PLANTING STAMPS AND SIGN
- 95. PLANTING STAMPS AND SIGN
- 96. PLANTING STAMPS AND SIGN
- 97. PLANTING STAMPS AND SIGN
- 98. PLANTING STAMPS AND SIGN
- 99. PLANTING STAMPS AND SIGN
- 100. PLANTING STAMPS AND SIGN

BEFORE SIGNING THIS PLAN I HAVE BEEN ADVISED BY THE SURVEYOR THAT THE PLAN AND THE CONVEYS ARE IN ACCORDANCE WITH THE ACT AND THE REGULATION AND THAT THE PLAN IS A TRUE AND CORRECT COPY OF THE ORIGINAL AND THAT THE CONVEYS ARE IN ACCORDANCE WITH THE ACT AND THE REGULATION AND THAT THE PLAN IS A TRUE AND CORRECT COPY OF THE ORIGINAL AND THAT THE CONVEYS ARE IN ACCORDANCE WITH THE ACT AND THE REGULATION.

TOTAL AREA OF SUBDIVISION - 19.6547 H.A.

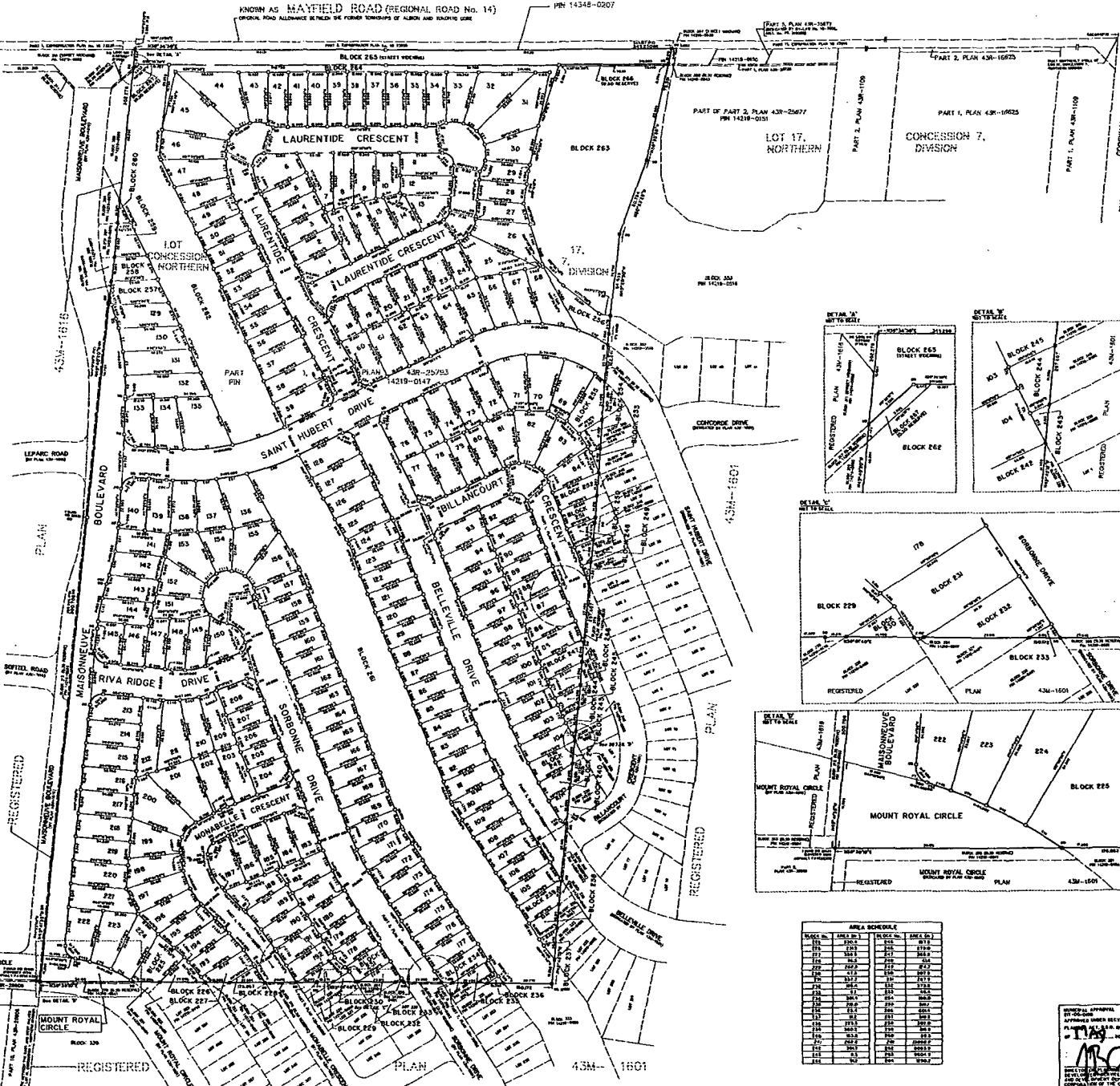
OWNER'S CERTIFICATE  
THIS IS TO CERTIFY THAT:  
1. I AM THE REGISTERED OWNER OF THE SUBDIVISION.  
2. THE PLAN IS A TRUE AND CORRECT COPY OF THE ORIGINAL.  
3. THE CONVEYS ARE IN ACCORDANCE WITH THE ACT AND THE REGULATION.  
4. THE SURVEY WAS COMPLETED ON THE 27th DAY OF 2008.

DATED THE 10th DAY OF 2008.  
MOUNT ROYAL DEVELOPMENTS INC.

BY: [Signature]  
I HAVE THE HONOUR TO SIGN FOR THE REGISTERED OWNER.

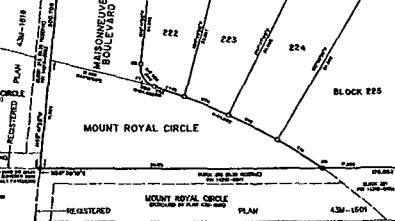
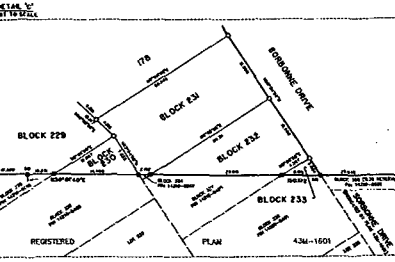
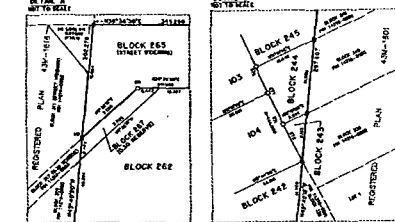
SURVEYOR'S CERTIFICATE  
I CERTIFY THAT:  
1. THE SURVEY AND PLAN ARE CORRECT AND IN ACCORDANCE WITH THE SURVEY ACT, THE REGULATIONS AND THE LAND TITLES ACT AND THE REGULATIONS MADE THEREUNDER.  
2. THE SURVEY WAS COMPLETED ON THE 27th DAY OF 2008.  
DATE: 2008-05-07.  
L. Christie  
Asst. Dir. Land Registry

SCHAEFFER & OZALDOV LIMITED  
ONTARIO LAND SURVEYORS  
54 JARVIS DRIVE, CONCORD, ONTARIO L4C 3G3  
TEL: 416-709-9000  
FAX: 416-709-9001  
WWW.SOSURVEYORS.COM



CURVE TABLE

STATION	CHORD BEARING	CHORD DISTANCE	ARC BEARING	ARC DISTANCE
1+00	N 0° 00' 00" E	0.00	0° 00' 00"	0.00
1+02	N 89° 59' 59" W	2.00	89° 59' 59"	2.00
1+04	S 0° 00' 00" E	4.00	0° 00' 00"	4.00
1+06	S 89° 59' 59" W	6.00	89° 59' 59"	6.00
1+08	S 0° 00' 00" E	8.00	0° 00' 00"	8.00
1+10	S 89° 59' 59" W	10.00	89° 59' 59"	10.00
1+12	S 0° 00' 00" E	12.00	0° 00' 00"	12.00
1+14	S 89° 59' 59" W	14.00	89° 59' 59"	14.00
1+16	S 0° 00' 00" E	16.00	0° 00' 00"	16.00
1+18	S 89° 59' 59" W	18.00	89° 59' 59"	18.00
1+20	S 0° 00' 00" E	20.00	0° 00' 00"	20.00
1+22	S 89° 59' 59" W	22.00	89° 59' 59"	22.00
1+24	S 0° 00' 00" E	24.00	0° 00' 00"	24.00
1+26	S 89° 59' 59" W	26.00	89° 59' 59"	26.00
1+28	S 0° 00' 00" E	28.00	0° 00' 00"	28.00
1+30	S 89° 59' 59" W	30.00	89° 59' 59"	30.00
1+32	S 0° 00' 00" E	32.00	0° 00' 00"	32.00
1+34	S 89° 59' 59" W	34.00	89° 59' 59"	34.00
1+36	S 0° 00' 00" E	36.00	0° 00' 00"	36.00
1+38	S 89° 59' 59" W	38.00	89° 59' 59"	38.00
1+40	S 0° 00' 00" E	40.00	0° 00' 00"	40.00
1+42	S 89° 59' 59" W	42.00	89° 59' 59"	42.00
1+44	S 0° 00' 00" E	44.00	0° 00' 00"	44.00
1+46	S 89° 59' 59" W	46.00	89° 59' 59"	46.00
1+48	S 0° 00' 00" E	48.00	0° 00' 00"	48.00
1+50	S 89° 59' 59" W	50.00	89° 59' 59"	50.00
1+52	S 0° 00' 00" E	52.00	0° 00' 00"	52.00
1+54	S 89° 59' 59" W	54.00	89° 59' 59"	54.00
1+56	S 0° 00' 00" E	56.00	0° 00' 00"	56.00
1+58	S 89° 59' 59" W	58.00	89° 59' 59"	58.00
1+60	S 0° 00' 00" E	60.00	0° 00' 00"	60.00
1+62	S 89° 59' 59" W	62.00	89° 59' 59"	62.00
1+64	S 0° 00' 00" E	64.00	0° 00' 00"	64.00
1+66	S 89° 59' 59" W	66.00	89° 59' 59"	66.00
1+68	S 0° 00' 00" E	68.00	0° 00' 00"	68.00
1+70	S 89° 59' 59" W	70.00	89° 59' 59"	70.00
1+72	S 0° 00' 00" E	72.00	0° 00' 00"	72.00
1+74	S 89° 59' 59" W	74.00	89° 59' 59"	74.00
1+76	S 0° 00' 00" E	76.00	0° 00' 00"	76.00
1+78	S 89° 59' 59" W	78.00	89° 59' 59"	78.00
1+80	S 0° 00' 00" E	80.00	0° 00' 00"	80.00
1+82	S 89° 59' 59" W	82.00	89° 59' 59"	82.00
1+84	S 0° 00' 00" E	84.00	0° 00' 00"	84.00
1+86	S 89° 59' 59" W	86.00	89° 59' 59"	86.00
1+88	S 0° 00' 00" E	88.00	0° 00' 00"	88.00
1+90	S 89° 59' 59" W	90.00	89° 59' 59"	90.00
1+92	S 0° 00' 00" E	92.00	0° 00' 00"	92.00
1+94	S 89° 59' 59" W	94.00	89° 59' 59"	94.00
1+96	S 0° 00' 00" E	96.00	0° 00' 00"	96.00
1+98	S 89° 59' 59" W	98.00	89° 59' 59"	98.00
2+00	S 0° 00' 00" E	100.00	0° 00' 00"	100.00
2+02	S 89° 59' 59" W	102.00	89° 59' 59"	102.00
2+04	S 0° 00' 00" E	104.00	0° 00' 00"	104.00
2+06	S 89° 59' 59" W	106.00	89° 59' 59"	106.00
2+08	S 0° 00' 00" E	108.00	0° 00' 00"	108.00
2+10	S 89° 59' 59" W	110.00	89° 59' 59"	110.00
2+12	S 0° 00' 00" E	112.00	0° 00' 00"	112.00
2+14	S 89° 59' 59" W	114.00	89° 59' 59"	114.00
2+16	S 0° 00' 00" E	116.00	0° 00' 00"	116.00
2+18	S 89° 59' 59" W	118.00	89° 59' 59"	118.00
2+20	S 0° 00' 00" E	120.00	0° 00' 00"	120.00
2+22	S 89° 59' 59" W	122.00	89° 59' 59"	122.00
2+24	S 0° 00' 00" E	124.00	0° 00' 00"	124.00
2+26	S 89° 59' 59" W	126.00	89° 59' 59"	126.00
2+28	S 0° 00' 00" E	128.00	0° 00' 00"	128.00
2+30	S 89° 59' 59" W	130.00	89° 59' 59"	130.00
2+32	S 0° 00' 00" E	132.00	0° 00' 00"	132.00
2+34	S 89° 59' 59" W	134.00	89° 59' 59"	134.00
2+36	S 0° 00' 00" E	136.00	0° 00' 00"	136.00
2+38	S 89° 59' 59" W	138.00	89° 59' 59"	138.00
2+40	S 0° 00' 00" E	140.00	0° 00' 00"	140.00
2+42	S 89° 59' 59" W	142.00	89° 59' 59"	142.00
2+44	S 0° 00' 00" E	144.00	0° 00' 00"	144.00
2+46	S 89° 59' 59" W	146.00	89° 59' 59"	146.00
2+48	S 0° 00' 00" E	148.00	0° 00' 00"	148.00
2+50	S 89° 59' 59" W	150.00	89° 59' 59"	150.00
2+52	S 0° 00' 00" E	152.00	0° 00' 00"	152.00
2+54	S 89° 59' 59" W	154.00	89° 59' 59"	154.00
2+56	S 0° 00' 00" E	156.00	0° 00' 00"	156.00
2+58	S 89° 59' 59" W	158.00	89° 59' 59"	158.00
2+60	S 0° 00' 00" E	160.00	0° 00' 00"	160.00
2+62	S 89° 59' 59" W	162.00	89° 59' 59"	162.00
2+64	S 0° 00' 00" E	164.00	0° 00' 00"	164.00
2+66	S 89° 59' 59" W	166.00	89° 59' 59"	166.00
2+68	S 0° 00' 00" E	168.00	0° 00' 00"	168.00
2+70	S 89° 59' 59" W	170.00	89° 59' 59"	170.00
2+72	S 0° 00' 00" E	172.00	0° 00' 00"	172.00
2+74	S 89° 59' 59" W	174.00	89° 59' 59"	174.00
2+76	S 0° 00' 00" E	176.00	0° 00' 00"	176.00
2+78	S 89° 59' 59" W	178.00	89° 59' 59"	178.00
2+80	S 0° 00' 00" E	180.00	0° 00' 00"	180.00
2+82	S 89° 59' 59" W	182.00	89° 59' 59"	182.00
2+84	S 0° 00' 00" E	184.00	0° 00' 00"	184.00
2+86	S 89° 59' 59" W	186.00	89° 59' 59"	186.00
2+88	S 0° 00' 00" E	188.00	0° 00' 00"	188.00
2+90	S 89° 59' 59" W	190.00	89° 59' 59"	190.00
2+92	S 0° 00' 00" E	192.00	0° 00' 00"	192.00
2+94	S 89° 59' 59" W	194.00	89° 59' 59"	194.00
2+96	S 0° 00' 00" E	196.00	0° 00' 00"	196.00
2+98	S 89° 59' 59" W	198.00	89° 59' 59"	198.00
3+00	S 0° 00' 00" E	200.00	0° 00' 00"	200.00



AREA SCHEDULE

BLOCK NO.	AREA (SQ. METRES)	AREA (SQ. FEET)
228	100.00	11960.30
229	100.00	11960.30
230	100.00	11960.30
231	100.00	11960.30
232	100.00	11960.30
233	100.00	11960.30
234	100.00	11960.30
235	100.00	11960.30
236	100.00	11960.30
237	100.00	11960.30
238	100.00	11960.30
239	100.00	11960.30
240	100.00	11960.30
241	100.00	11960.30
242	100.00	11960.30
243	100.00	11960.30
244	100.00	11960.30
245	100.00	11960.30
246	100.00	11960.30
247	100.00	11960.30
248	100.00	11960.30
249	100.00	11960.30
250	100.00	11960.30
251	100.00	11960.30
252	100.00	11960.30
253	100.00	11960.30
254	100.00	11960.30
255	100.00	11960.30
256	100.00	11960.30
257	100.00	11960.30
258	100.00	11960.30
259	100.00	11960.30
260	100.00	11960.30
261	100.00	11960.30
262	100.00	11960.30
263	100.00	11960.30
264	100.00	11960.30
265	100.00	11960.30
266	100.00	11960.30
267	100.00	11960.30
268	100.00	11960.30
269	100.00	11960.30
270	100.00	11960.30
271	100.00	11960.30
272	100.00	11960.30
273	100.00	11960.30
274	100.00	11960.30
275	100.00	11960.30
276	100.00	11960.30
277	100.00	11960.30
278	100.00	11960.30
279	100.00	11960.30
280	100.00	11960.30
281	100.00	11960.30
282	100.00	11960.30
283	100.00	11960.30
284	100.00	11960.30
285	100.0	