



THE CORPORATION OF THE CITY OF BRAMPTON

# BY-LAW

*Number* 80-96

To authorize the sale of  
certain surplus parkland

---

The Council of The Corporation of the City of Brampton has determined that the lands described herein are no longer required for the purposes of the municipality.

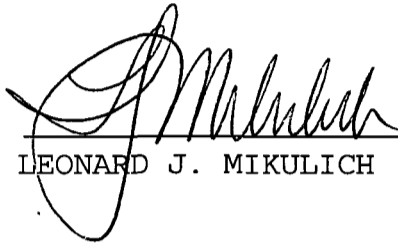
The Council of The Corporation of the City of Brampton **ENACTS AS FOLLOWS:**

1. The part of Block K, Registered Plan 636 and part of the 1' reserve on Registered Plan 614, designated as Parts 1 and 2 on Plan 43R-21552 are hereby declared surplus. The sale of the said lands to Gilbert Castella at a price of \$5.74 per square foot plus legal and survey costs is hereby authorized.
2. The part of Block A, Registered Plan M-103 abutting Lot 22 on Registered Plan M-105 highlighted on the sketch attached as Schedule A to this by-law is hereby declared surplus. The sale of the said land to Ian Martin and Olga Martin at a price of \$5.74 per square foot plus legal and survey costs is hereby authorized.
3. The part of Block A, Registered Plan M-103 abutting Lot 23 on Registered Plan M-105 highlighted on the sketch attached as Schedule B to this by-law is hereby declared surplus. The sale of the said land to Donna Kirisits and Joe Kirisits at a price of \$5.74 per square foot plus legal and survey costs is hereby authorized.
4. The Mayor and Clerk are hereby authorized to execute all documents approved by the City Solicitor that in his opinion are necessary to effect the transfer of the lands described in this by-law.

READ a FIRST, SECOND and THIRD TIME and PASSED in  
Open Council this 13th day of May, 1996.



PETER ROBERTSON MAYOR



LEONARD J. MIKULICH CLERK

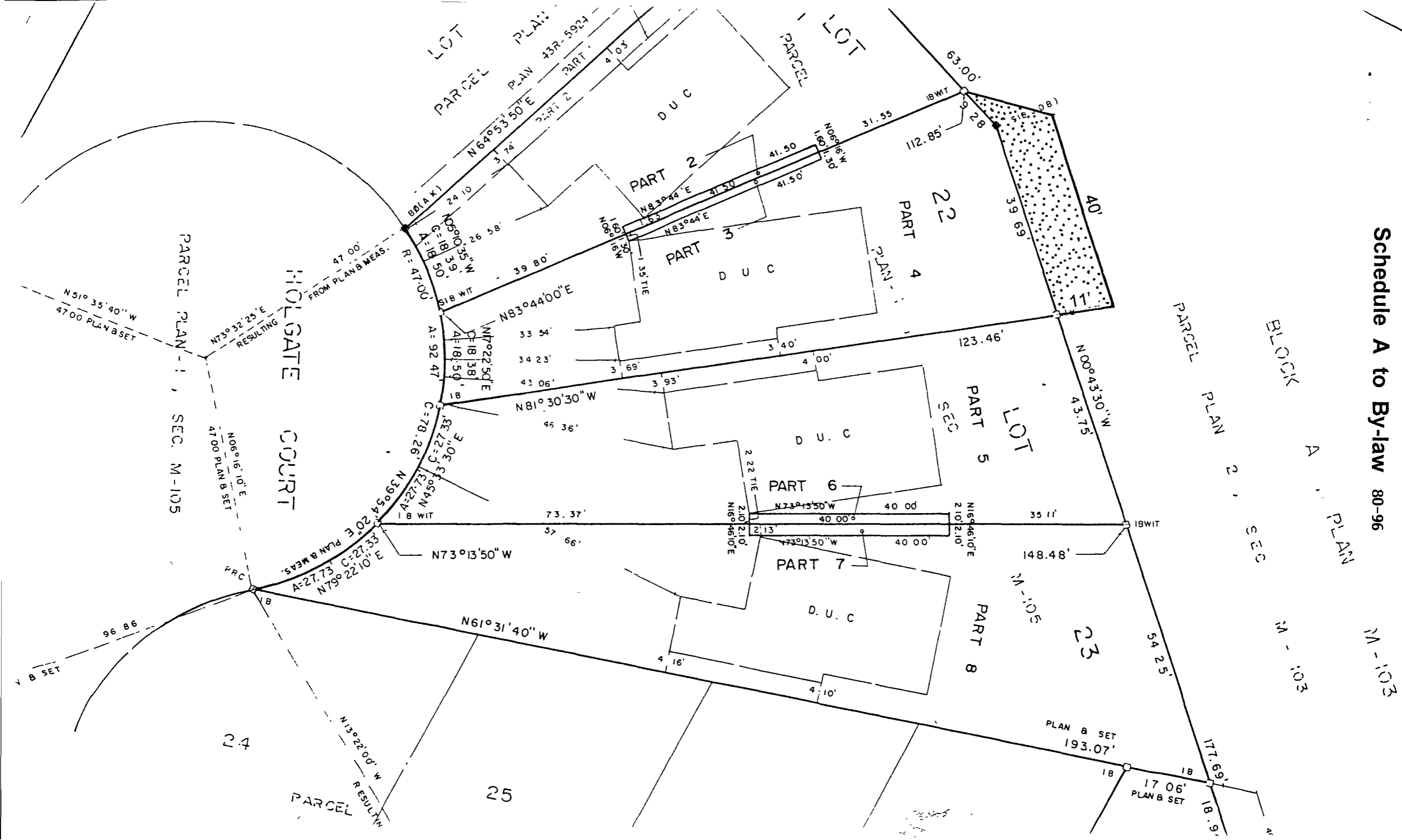
APPROVED  
AS TO FORM  
LAW DEPT.  
BRAMPTON

WCC

DATE 14/05/96

Schedule A to By-law 80-96

M-103



Schedule B to By-law

80-96

M-103

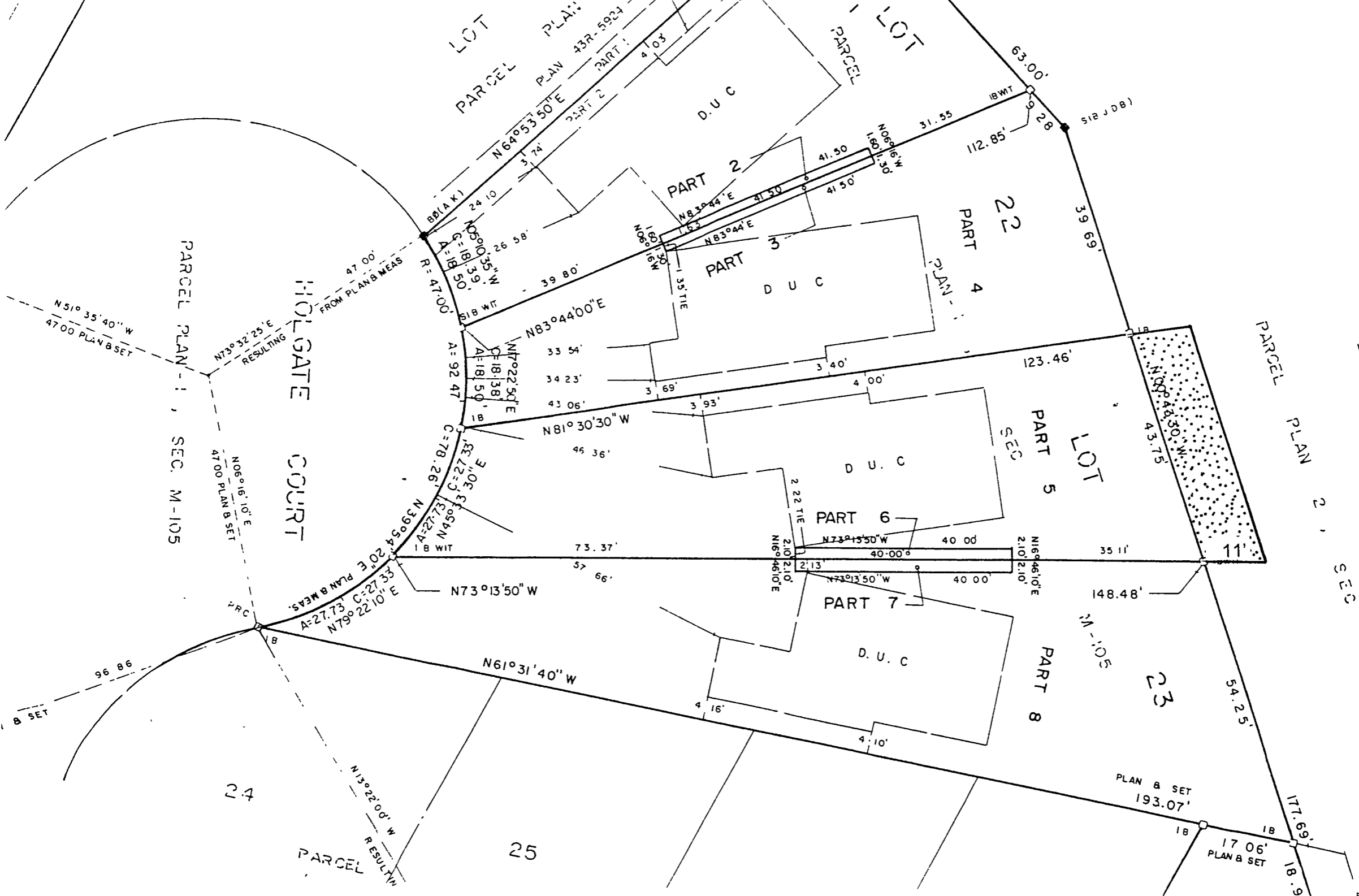
BLOCK A PLAN

SEC M-103

PARCEL PLAN 2, SEC

HOLGATE COURT

PARCEL PLAN 1, SEC. M-105



PLAN & SET  
193.07'

17 06'  
PLAN & SET

25

23

22

24

N51°35'40\" W  
47 00' PLAN B SET

N73°32'25\" E  
47 00' FROM PLAN B MEAS  
RESULTING

N06°16'10\" E  
47 00' PLAN B SET

A=27.73 C=27.33  
N79°22'10\" E

LOT  
PARCEL PLAN 43R-5924  
PART 1  
PART 2

LOT  
PARCEL PLAN 1

PART 2  
PART 3  
PART 4  
D.U.C.

LOT  
PART 5  
D.U.C.

PART 6  
PART 7  
D.U.C.

PART 8

R=47.00'

A=18.39'  
B=39.80'  
C=55.26 58'

N83°44'00\" E  
N83°44'00\" E  
N17°02'30\" E  
N18°13'38\" E  
N18°50'50\" E  
A=92.47'

N81°30'30\" W  
N39°54'20\" E  
A=78.26'  
C=78.26'

N73°13'50\" W  
N61°31'40\" W

4 03'

3 74'

3 98'

3 69'

3 93'

3 66'

4 16'

4 10'

4 10'

4 03'

4 10'

4 10'

4 00'

4 00'

4 00'

4 00'

4 00'

4 00'

4 10'

4 10'

4 10'

4 10'

4 10'

4 10'

4 10'

4 10'

4 10'

4 10'

4 10'

4 10'

4 10'

4 10'

4 10'

4 10'

4 10'

4 10'

4 10'

4 10'

4 10'

4 10'

4 10'

4 10'

4 10'

4 10'

4 10'

4 10'

4 10'

4 10'

4 10'

4 10'

4 10'

4 10'

4 10'

4 10'

4 10'

4 10'

4 10'

4 10'

4 10'

4 10'

4 10'

4 10'

4 10'

4 10'

4 10'

4 10'

4 10'

4 10'

4 10'

4 10'

4 10'

4 10'

4 10'

4 10'

4 10'

4 10'

4 10'

4 10'

4 10'

4 10'

4 10'

4 10'

4 10'

4 10'

4 10'

4 10'

4 10'

4 10'

4 10'

4 10'

4 10'

4 10'

4 10'

4 10'

4 10'

4 10'

4 10'

4 10'

4 10'

4 10'

4 10'

4 10'

4 10'

4 10'

4 10'

4 10'

4 10'

4 10'

4 10'

4 10'

4 10'

4 10'

4 10'

4 10'

4 10'

4 10'

4 10'

4 10'

4 10'

4 10'

4 10'

4 10'

4 10'

4 10'

4 10'

4 10'

4 10'

4 10'

4 10'

4 10'

4 10'

4 10'

4 10'

4 10'

4 10'

4 10'

4 10'

4 10'

4 10'

4 10'

4 10'

4 10'

4 10'

4 10'

4 10'

4 10'

4 10'

4 10'

4 10'

4 10'

4 10'

4 10'

4 10'

4 10'

4 10'

4 10'

4 10'

4 10'

4 10'

4 10'

4 10'

4 10'