



THE CORPORATION OF THE CITY OF BRAMPTON

BY-LAW

Number 306-2015

To accept and assume works in
Registered Plan 43M-1821

WHEREAS the Council of The Corporation of the City of Brampton has, by resolution, decided that all works constructed and installed in accordance with the subdivision agreement for Registered Plan 43M-1821 be accepted and assumed;

AND WHEREAS Council has authorized the City Treasurer to release all the securities held by the City; save and except for the amount of \$39,000 which shall be held by the City until such time as the Executive Director, Engineering and Development Services is satisfied that the temporary turning circle has been removed, and that *that* portion of Rainbrook Close has been completed, and the warranty period for landscape works has expired; and

AND WHEREAS it is deemed expedient to accept and assume the streets on Registered Plan 43M-1821 as part of the public highway system.

NOW THEREFORE the Council of The Corporation of the City of Brampton hereby **ENACTS** as follows:

1. All of the works constructed and installed in accordance with the subdivision agreement for Registered Plan 43M-1821 are hereby accepted and assumed.
2. The lands described in Schedule A to this by-law are hereby accepted and assumed as part of the public highway system of the City of Brampton.

READ a FIRST, SECOND, AND THIRD TIME and PASSED in Open Council this 9th day of December, 2015.

Approved as to
form.
30/11/15
Tiz.

Approved as to
content.
30/Nov/2015

Linda Jeffrey, Mayor

Peter Fay, City Clerk

SCHEDULE A TO BY-LAW NO. 306-2015

REGISTERED PLAN 43M-1821

Rainbrook Close, Haviland Circle, Welland Road and Judson Gate

City of Brampton
Regional Municipality of Peel

217-62-0268 AND 217-61-0168
 APPROVED UNDER SECTION 21 OF THE PLANNING ACT, R.S.O. 1990, G.S.L.
 WAS 18 DAY OF August 2010

PLAN 43M-1821
 I CERTIFY THAT THIS PLAN IS REGISTERED IN THE LAND REGISTRY OFFICE FOR THE LAND TAXES DIVISION OF PEEL (IN. 43) AT 11:04 O'CLOCK ON THE 23 DAY OF August 2010 AND ENTERED IN THE PARCEL REGISTER FOR PROPERTY IDENTIFIERS (IN. 43) PLAN 43M-1821 AND THE REQUIRED CONSENTS ARE REGISTERED AS PLAN DOCUMENT NO. 18171665
Kelly G. Kelly
 Professional County Land Engineer

THIS PLAN CONTAINS ALL OF THIS 1422-2402(1), 1422-2402(2) AND PN 1422-2402(3)
PLAN OF SURVEY OF PART OF EAST HALF LOT 15 CONCESSION 8 EAST OF HURONTARIO STREET (TOWNSHIP OF CHINGOICHAU, COUNTY OF PEEL) NOW IN THE CITY OF BRAMPTON REGIONAL MUNICIPALITY OF PEEL
 SCALE 1:1000
KROMAR SURVEYORS LTD. 2010

NOTING: DISTANCES SHOWN ON THIS PLAN ARE IN METRES AND CAN BE CONVERTED TO FEET BY DIVIDING BY 0.3048

BEARING: BEARINGS SHOWN HEREON ARE APPROXIMATE AND ARE REFERRED TO THE ENCLOSED LIST OF CORRECT BEARINGS AS SHOWN ON PLANS 43M-2827 AND PLAN 43M-1821 WHICH HAVE A BEARING OF CERTIFICATE.

LEGEND
 S RECOVERED SURVEY MONUMENT FOUND
 S RECOVERED SURVEY MONUMENT PLANTED
 S RECOVERED STAKE WITH B.M.
 S RECOVERED SIGN MARK
 S RECOVERED STAKE
 S RECOVERED REBAR
 S RECOVERED CONCRETE MONUMENT
 S RECOVERED PLAN 43M-2827
 S RECOVERED PLAN 43M-2828
 S RECOVERED PLAN 43M-2829
 S RECOVERED PLAN 43M-1745
 S RECOVERED PLAN 43M-1746
 S RECOVERED PLAN 43M-1747
 S RECOVERED PLAN 43M-1748
 S RECOVERED PLAN 43M-1749
 S RECOVERED PLAN 43M-1750
 S RECOVERED PLAN 43M-1751
 S RECOVERED PLAN 43M-1752
 S RECOVERED PLAN 43M-1753
 S RECOVERED PLAN 43M-1754
 S RECOVERED PLAN 43M-1755
 S RECOVERED PLAN 43M-1756
 S RECOVERED PLAN 43M-1757
 S RECOVERED PLAN 43M-1758
 S RECOVERED PLAN 43M-1759
 S RECOVERED PLAN 43M-1760
 S RECOVERED PLAN 43M-1761
 S RECOVERED PLAN 43M-1762
 S RECOVERED PLAN 43M-1763
 S RECOVERED PLAN 43M-1764
 S RECOVERED PLAN 43M-1765
 S RECOVERED PLAN 43M-1766
 S RECOVERED PLAN 43M-1767
 S RECOVERED PLAN 43M-1768
 S RECOVERED PLAN 43M-1769
 S RECOVERED PLAN 43M-1770
 S RECOVERED PLAN 43M-1771
 S RECOVERED PLAN 43M-1772
 S RECOVERED PLAN 43M-1773
 S RECOVERED PLAN 43M-1774
 S RECOVERED PLAN 43M-1775
 S RECOVERED PLAN 43M-1776
 S RECOVERED PLAN 43M-1777
 S RECOVERED PLAN 43M-1778
 S RECOVERED PLAN 43M-1779
 S RECOVERED PLAN 43M-1780
 S RECOVERED PLAN 43M-1781
 S RECOVERED PLAN 43M-1782
 S RECOVERED PLAN 43M-1783
 S RECOVERED PLAN 43M-1784
 S RECOVERED PLAN 43M-1785
 S RECOVERED PLAN 43M-1786
 S RECOVERED PLAN 43M-1787
 S RECOVERED PLAN 43M-1788
 S RECOVERED PLAN 43M-1789
 S RECOVERED PLAN 43M-1790
 S RECOVERED PLAN 43M-1791
 S RECOVERED PLAN 43M-1792
 S RECOVERED PLAN 43M-1793
 S RECOVERED PLAN 43M-1794
 S RECOVERED PLAN 43M-1795
 S RECOVERED PLAN 43M-1796
 S RECOVERED PLAN 43M-1797
 S RECOVERED PLAN 43M-1798
 S RECOVERED PLAN 43M-1799
 S RECOVERED PLAN 43M-1800
 S RECOVERED PLAN 43M-1801
 S RECOVERED PLAN 43M-1802
 S RECOVERED PLAN 43M-1803
 S RECOVERED PLAN 43M-1804
 S RECOVERED PLAN 43M-1805
 S RECOVERED PLAN 43M-1806
 S RECOVERED PLAN 43M-1807
 S RECOVERED PLAN 43M-1808
 S RECOVERED PLAN 43M-1809
 S RECOVERED PLAN 43M-1810
 S RECOVERED PLAN 43M-1811
 S RECOVERED PLAN 43M-1812
 S RECOVERED PLAN 43M-1813
 S RECOVERED PLAN 43M-1814
 S RECOVERED PLAN 43M-1815
 S RECOVERED PLAN 43M-1816
 S RECOVERED PLAN 43M-1817
 S RECOVERED PLAN 43M-1818
 S RECOVERED PLAN 43M-1819
 S RECOVERED PLAN 43M-1820
 S RECOVERED PLAN 43M-1821
 S RECOVERED PLAN 43M-1822
 S RECOVERED PLAN 43M-1823
 S RECOVERED PLAN 43M-1824
 S RECOVERED PLAN 43M-1825
 S RECOVERED PLAN 43M-1826
 S RECOVERED PLAN 43M-1827
 S RECOVERED PLAN 43M-1828
 S RECOVERED PLAN 43M-1829
 S RECOVERED PLAN 43M-1830
 S RECOVERED PLAN 43M-1831
 S RECOVERED PLAN 43M-1832
 S RECOVERED PLAN 43M-1833
 S RECOVERED PLAN 43M-1834
 S RECOVERED PLAN 43M-1835
 S RECOVERED PLAN 43M-1836
 S RECOVERED PLAN 43M-1837
 S RECOVERED PLAN 43M-1838
 S RECOVERED PLAN 43M-1839
 S RECOVERED PLAN 43M-1840
 S RECOVERED PLAN 43M-1841
 S RECOVERED PLAN 43M-1842
 S RECOVERED PLAN 43M-1843
 S RECOVERED PLAN 43M-1844
 S RECOVERED PLAN 43M-1845
 S RECOVERED PLAN 43M-1846
 S RECOVERED PLAN 43M-1847
 S RECOVERED PLAN 43M-1848
 S RECOVERED PLAN 43M-1849
 S RECOVERED PLAN 43M-1850
 S RECOVERED PLAN 43M-1851
 S RECOVERED PLAN 43M-1852
 S RECOVERED PLAN 43M-1853
 S RECOVERED PLAN 43M-1854
 S RECOVERED PLAN 43M-1855
 S RECOVERED PLAN 43M-1856
 S RECOVERED PLAN 43M-1857
 S RECOVERED PLAN 43M-1858
 S RECOVERED PLAN 43M-1859
 S RECOVERED PLAN 43M-1860
 S RECOVERED PLAN 43M-1861
 S RECOVERED PLAN 43M-1862
 S RECOVERED PLAN 43M-1863
 S RECOVERED PLAN 43M-1864
 S RECOVERED PLAN 43M-1865
 S RECOVERED PLAN 43M-1866
 S RECOVERED PLAN 43M-1867
 S RECOVERED PLAN 43M-1868
 S RECOVERED PLAN 43M-1869
 S RECOVERED PLAN 43M-1870
 S RECOVERED PLAN 43M-1871
 S RECOVERED PLAN 43M-1872
 S RECOVERED PLAN 43M-1873
 S RECOVERED PLAN 43M-1874
 S RECOVERED PLAN 43M-1875
 S RECOVERED PLAN 43M-1876
 S RECOVERED PLAN 43M-1877
 S RECOVERED PLAN 43M-1878
 S RECOVERED PLAN 43M-1879
 S RECOVERED PLAN 43M-1880
 S RECOVERED PLAN 43M-1881
 S RECOVERED PLAN 43M-1882
 S RECOVERED PLAN 43M-1883
 S RECOVERED PLAN 43M-1884
 S RECOVERED PLAN 43M-1885
 S RECOVERED PLAN 43M-1886
 S RECOVERED PLAN 43M-1887
 S RECOVERED PLAN 43M-1888
 S RECOVERED PLAN 43M-1889
 S RECOVERED PLAN 43M-1890
 S RECOVERED PLAN 43M-1891
 S RECOVERED PLAN 43M-1892
 S RECOVERED PLAN 43M-1893
 S RECOVERED PLAN 43M-1894
 S RECOVERED PLAN 43M-1895
 S RECOVERED PLAN 43M-1896
 S RECOVERED PLAN 43M-1897
 S RECOVERED PLAN 43M-1898
 S RECOVERED PLAN 43M-1899
 S RECOVERED PLAN 43M-1900

TOTAL AREA OF THIS SUBDIVISION=10.3257 ha
 ALL PLANTED MONUMENTS ARE SIGN MARK UNLESS OTHERWISE NOTED

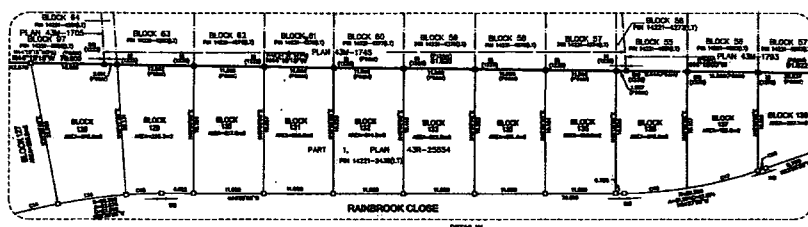
SURVEYOR'S CERTIFICATE
 I CERTIFY THAT:
 1. THIS SURVEY AND PLAN ARE CORRECT AND IN ACCORDANCE WITH THE SURVEY ACT, THE SUBDIVISION ACT AND THE LAND TAXES ACT AND THE REGULATIONS MADE THEREIN.
 2. THE SURVEY WAS COMPLETED ON THE 18 DAY OF August, 2010
 DATE: 18 AUG 2010
Kelly G. Kelly
 PROFESSIONAL COUNTY LAND SURVEYOR

OWNER'S CERTIFICATE
 I CERTIFY THAT:
 1. LOTS 1 TO 152 INCLUDING BLOCK 102 TO 104, INCLUDING STREETS, PUBLIC AMENITIES, CLOSURE, HAVLAND CIRCLE, MOUNTAINASH ROAD, AND COUNTRY DRIVE AND 2-10 RESERVE, BLOCK 102 HAVE BEEN Laid OUT IN ACCORDANCE WITH THIS INSTRUMENT.
 2. THE INSTRUMENT IS HEREBY DECLARED TO BE THE COMPANION OF THE CITY OF BRAMPTON AS PUBLIC INSTRUMENT.

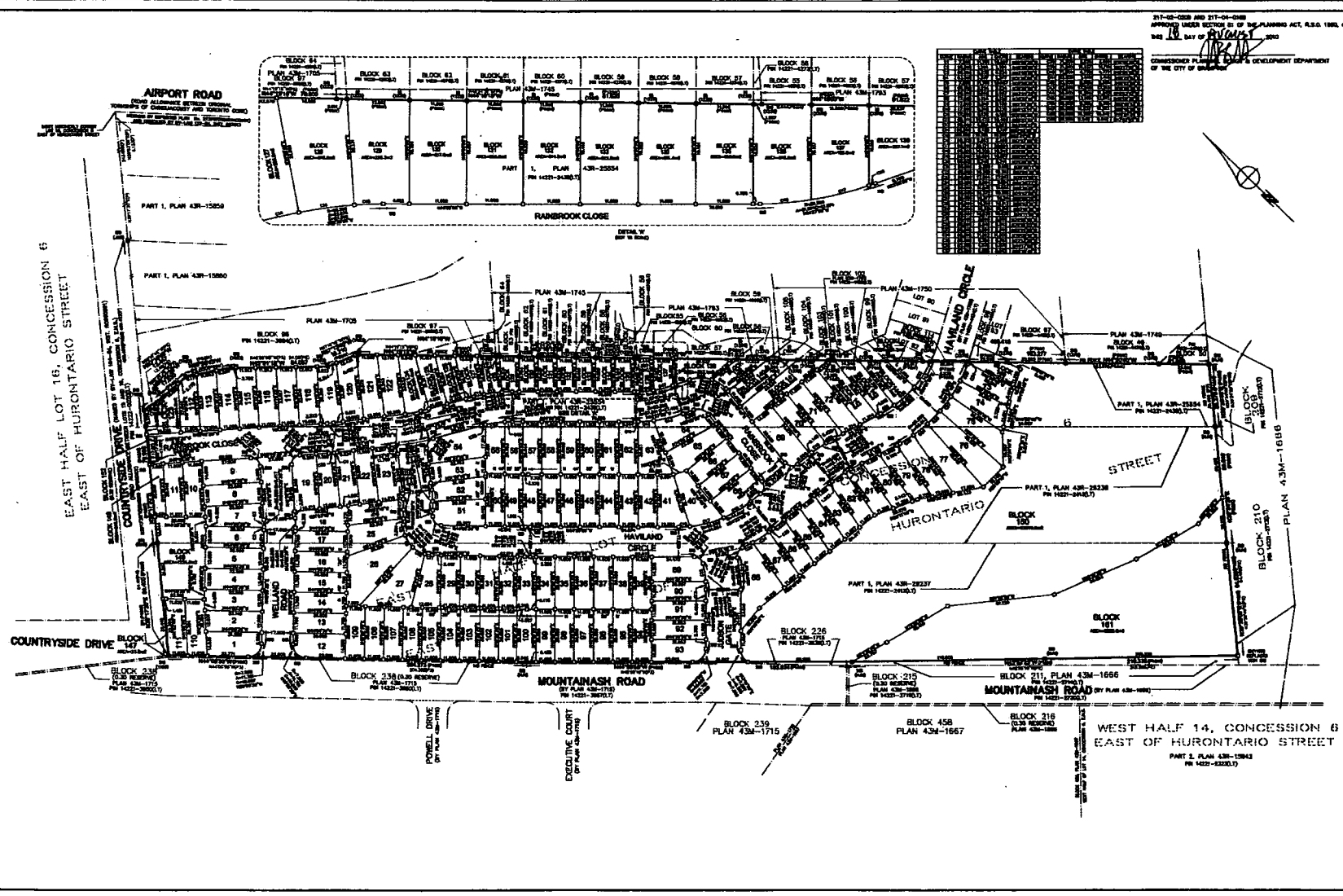
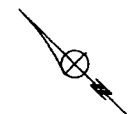
BROOKWALLEY DEVELOPMENTS BRAMPTON INC.
 DATED THIS 18 DAY OF August 2010
Kelly G. Kelly
 MIC CORTISIAO, A.S.A.
 I MAKE THE AUTHORITY TO SIGN THE COMPANION

PLAN 43M-1821
 SHEET NO. 01 OF 01
 DATE: 18 AUG 2010
 TIME: 11:04 AM
 THE COUNTY OF PEEL HAS LAID OUT THE PUBLIC STREETS AND AMENITIES

KRCMAR



Block	Plan	Area (ha)
BLOCK 84	PLAN 43M-1742	0.1000
BLOCK 85	PLAN 43M-1743	0.1000
BLOCK 86	PLAN 43M-1744	0.1000
BLOCK 87	PLAN 43M-1745	0.1000
BLOCK 88	PLAN 43M-1746	0.1000
BLOCK 89	PLAN 43M-1747	0.1000
BLOCK 90	PLAN 43M-1748	0.1000
BLOCK 91	PLAN 43M-1749	0.1000
BLOCK 92	PLAN 43M-1750	0.1000
BLOCK 93	PLAN 43M-1751	0.1000
BLOCK 94	PLAN 43M-1752	0.1000
BLOCK 95	PLAN 43M-1753	0.1000
BLOCK 96	PLAN 43M-1754	0.1000
BLOCK 97	PLAN 43M-1755	0.1000
BLOCK 98	PLAN 43M-1756	0.1000
BLOCK 99	PLAN 43M-1757	0.1000
BLOCK 100	PLAN 43M-1758	0.1000
BLOCK 101	PLAN 43M-1759	0.1000
BLOCK 102	PLAN 43M-1760	0.1000
BLOCK 103	PLAN 43M-1761	0.1000
BLOCK 104	PLAN 43M-1762	0.1000
BLOCK 105	PLAN 43M-1763	0.1000
BLOCK 106	PLAN 43M-1764	0.1000
BLOCK 107	PLAN 43M-1765	0.1000
BLOCK 108	PLAN 43M-1766	0.1000
BLOCK 109	PLAN 43M-1767	0.1000
BLOCK 110	PLAN 43M-1768	0.1000
BLOCK 111	PLAN 43M-1769	0.1000
BLOCK 112	PLAN 43M-1770	0.1000
BLOCK 113	PLAN 43M-1771	0.1000
BLOCK 114	PLAN 43M-1772	0.1000
BLOCK 115	PLAN 43M-1773	0.1000
BLOCK 116	PLAN 43M-1774	0.1000
BLOCK 117	PLAN 43M-1775	0.1000
BLOCK 118	PLAN 43M-1776	0.1000
BLOCK 119	PLAN 43M-1777	0.1000
BLOCK 120	PLAN 43M-1778	0.1000
BLOCK 121	PLAN 43M-1779	0.1000
BLOCK 122	PLAN 43M-1780	0.1000
BLOCK 123	PLAN 43M-1781	0.1000
BLOCK 124	PLAN 43M-1782	0.1000
BLOCK 125	PLAN 43M-1783	0.1000
BLOCK 126	PLAN 43M-1784	0.1000
BLOCK 127	PLAN 43M-1785	0.1000
BLOCK 128	PLAN 43M-1786	0.1000
BLOCK 129	PLAN 43M-1787	0.1000
BLOCK 130	PLAN 43M-1788	0.1000



By-law 306-2015