



THE CORPORATION OF THE CITY OF BRAMPTON

BY-LAW

Number 246-2014

To accept and assume works in

Registered Plan 43M-1752

WHEREAS the Council of The Corporation of the City of Brampton has, by resolution, decided that all works constructed and installed in accordance with the subdivision agreement for Registered Plan 43M-1752 be accepted and assumed;

AND WHEREAS Council has authorized the City Treasurer to release all the securities held by the City;

AND WHEREAS it is deemed expedient to accept and assume the street on Registered Plan 43M-1752 as part of the public highway system.

NOW THEREFORE the Council of The Corporation of the City of Brampton hereby **ENACTS** as follows:

1. All of the works constructed and installed in accordance with the subdivision agreement for Registered Plan 43M-1752 are hereby accepted and assumed.
2. The lands described in Schedule A to this by-law are hereby accepted and assumed as part of the public highway system of the City of Brampton.

READ a FIRST, SECOND, AND THIRD TIME and PASSED in Open Council this 10th day of September, 2014.

Approved as to
form.
19/08/14
J.F.

Approved as to
content.
13/09/2014
[Signature]

[Signature]
Susan Fennell, Mayor

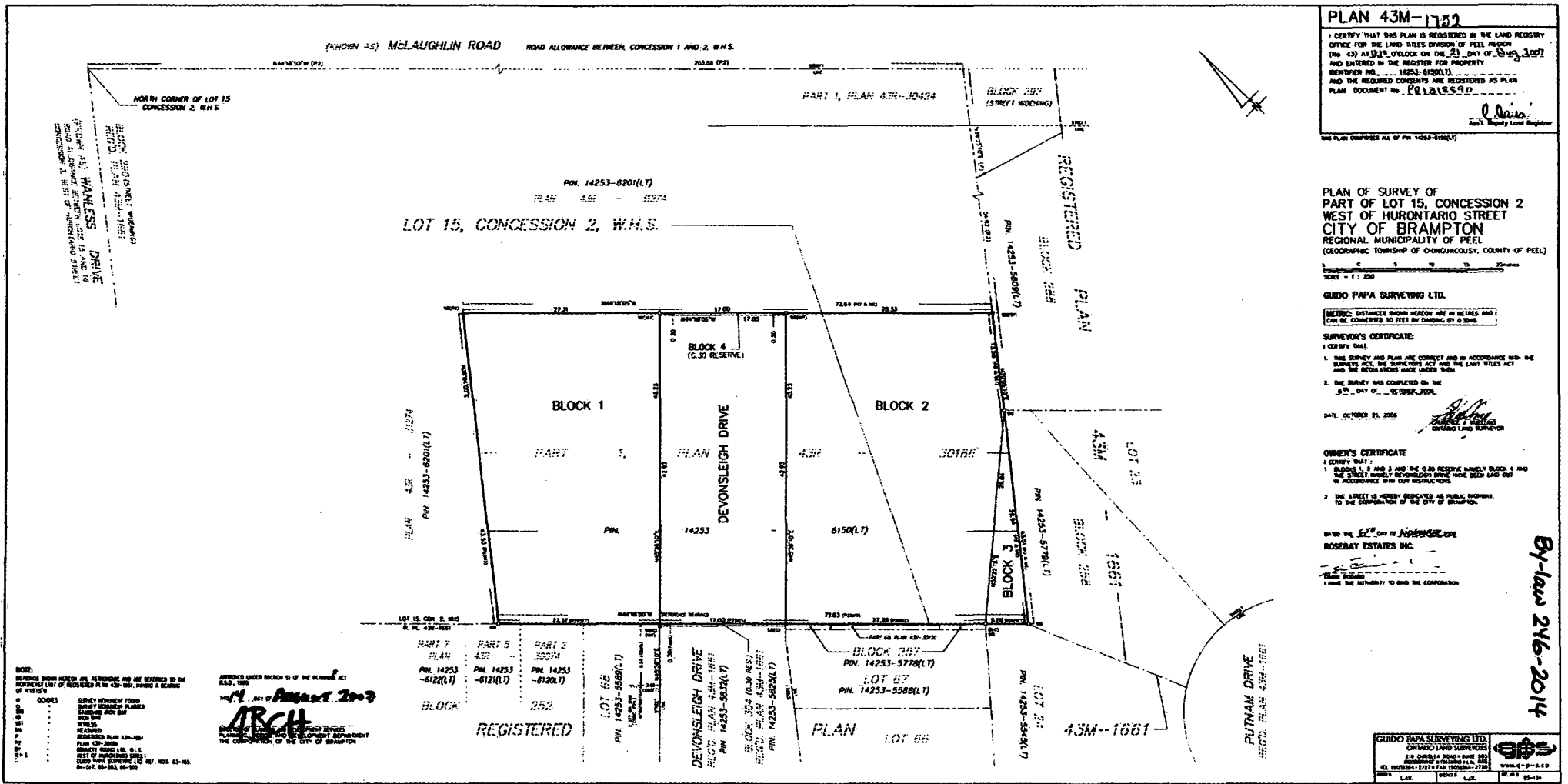
[Signature]
Peter Fay, City Clerk

SCHEDULE A TO BY-LAW NO. 246-2014

REGISTERED PLAN 43M-1752

Devonsleigh Drive

City of Brampton
Regional Municipality of Peel



PLAN 43M-1722

I CERTIFY THAT THIS PLAN IS REGISTERED IN THE LAND REGISTRY OFFICE FOR THE LAND TILES DIVISION OF PEEL REGION (IN 43) AT 10:00 O'CLOCK ON THE 21 DAY OF Aug 2007 AND ENTERED IN THE REGISTER FOR PROPERTY IDENTIFIER NO. 14253-620(L) AND THE REQUIRED CONSENTS ARE REGISTERED AS PLAN DOCUMENT NO. P121559D

G. P. Papa
 Asst. Deputy Land Registrar

THE PLAN COMPRISES ALL OF PIN 14253-620(L)

PLAN OF SURVEY OF
 PART OF LOT 15, CONCESSION 2
 WEST OF HURONTARIO STREET
 CITY OF BRAMPTON
 REGIONAL MUNICIPALITY OF PEEL
 (GEOGRAPHIC TOWNSHIP OF ONQUAGOUCHE, COUNTY OF PEEL)

SCALE = 1 : 200

GUIDO PAPA SURVEYING LTD.

METRIC DISTANCES SHOWN HEREON ARE IN METRES AND CAN BE CONVERTED TO FEET BY DIVIDING BY 0.3048.

SURVEYOR'S CERTIFICATE

I CERTIFY THAT:

- THIS SURVEY AND PLAN ARE CORRECT AND IN ACCORDANCE WITH THE SURVEY ACT, THE SURVEYORS ACT AND THE LAND TILES ACT AND THE REGULATIONS MADE UNDER THEM
- THE SURVEY WAS COMPLETED ON THE 20 DAY OF 10 OCTOBER 2007

DATE: OCTOBER 20, 2007

G. P. Papa
 GUIDO PAPA
 CHARTERED LAND SURVEYOR

OWNER'S CERTIFICATE

I CERTIFY THAT:

- BLOCKS 1, 2 AND 3 AND THE 0.30 RESERVE BARELY BLOCK 4 AND THE STREET BARELY DEVONSLIEGH DRIVE HAVE BEEN Laid OUT IN ACCORDANCE WITH OUR INSTRUMENTS.
- THE STREET IS HEREBY DEDICATED AS PUBLIC HIGHWAY TO THE CORPORATION OF THE CITY OF BRAMPTON.

DRAWN BY: *G. P. Papa* CHARTERED LAND SURVEYOR

ROSEBAY ESTATES INC.

PLAN 43M-1722

I HAVE THE AUTHORITY TO SIGN THIS CORPORATION

GUIDO PAPA SURVEYING LTD.
 CHARTERED LAND SURVEYOR
 118 COMPLEX ROAD, SUITE 100
 BRAMPTON, ONTARIO, CANADA, N6C 2K8
 TEL: (905) 874-7474 FAX: (905) 874-7475
 WWW.GP-SURV.COM

(NORTH 45°) MCLAUGHLIN ROAD ROAD ALLOWANCE BETWEEN CONCESSION 1 AND 2, W.H.S.

NORTH CORNER OF LOT 15 CONCESSION 2, W.H.S.

SECTION 25(1) ONLY (MUNICIPALITY OF PEEL) PLAN 43M-1722-1722-1722-1722

SECTION 25(1) ONLY (MUNICIPALITY OF PEEL) PLAN 43M-1722-1722-1722-1722

SECTION 25(1) ONLY (MUNICIPALITY OF PEEL) PLAN 43M-1722-1722-1722-1722

NOTE:

BOUNDARIES SHOWN HEREON ARE, AS SHOWN, AND ARE REFERRED TO IN THE INSTRUMENTS OF RECORDING PLAN 43M-1722, HAVING A RECORD OF SURVEY

COORDS: SURVEY INSTRUMENT RECORD
 POINT COORDINATES PLANNED
 AND THE SURVEYOR'S ACT

WETLANDS: WETLANDS ARE SHOWN BY A WETLAND SYMBOL
 REGISTERED PLAN 43M-1722
 PLAN 43M-1722
 SURVEY INSTRUMENT NO. 016
 PART OF CONCESSION 2
 ROAD TOWN SURVEYING LTD. REG. NO. 01-01-01-01-01

APPROVED UNDER SECTION 53 OF THE PLANNING ACT

21 August 2007

ARCH

PLANNING DEPARTMENT
 THE CORPORATION OF THE CITY OF BRAMPTON

PART 7 PLAN 14253-612(L)

PART 5 PLAN 43M-3527(L)

PART 2 PLAN 14253-612(L)

LOT 66 PLAN 14253-558(L)

REGISTERED

By-law 246-2014