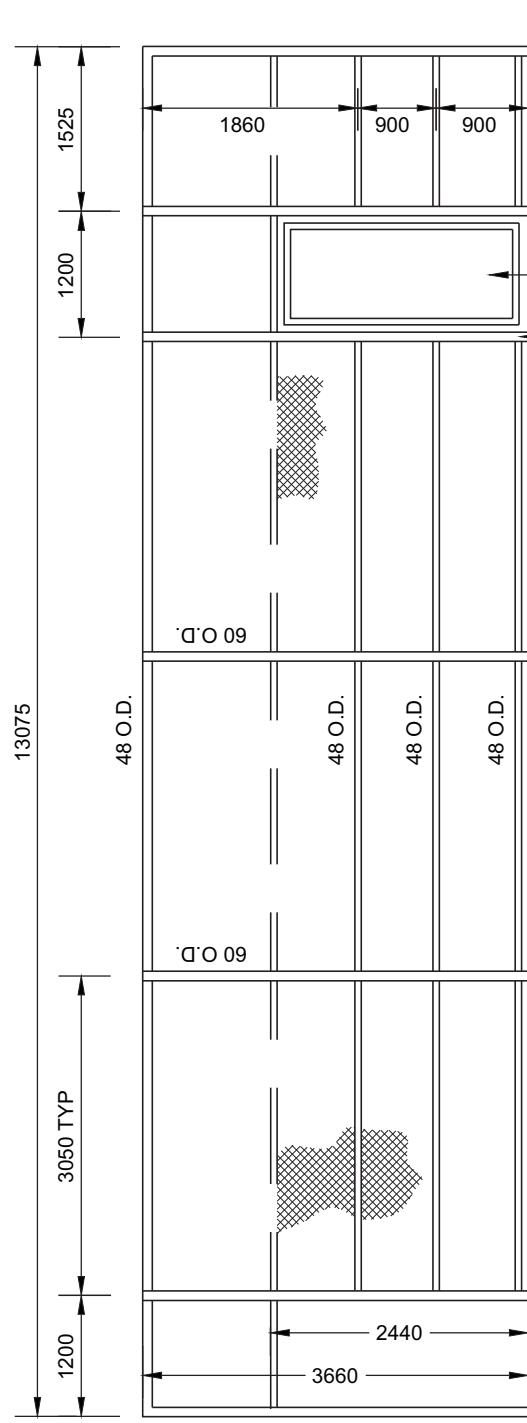


**SIDE ELEVATION**



**FRONT ELEVATION**

**NOTES:**

1. DUGOUT TO BE OF ALL WELDED CONSTRUCTION.
2. CHAIN LINK FABRIC TO BE 38X38 GALVANIZED MESH 3.5MM (9 GAUGE) SECURED WITH STRETCHER BARS AND BAR BANDS AT 250 O.C., AND 3.5MM GALVANIZED WIRE TIES AT 250 O.C.
3. REFER TO DETAIL L415 FOR BASEBALL / SOFTBALL DUGOUT PLAN.
4. STEEL STRUCTURE AND FOOTING DESIGN SHALL BE CERTIFIED BY STRUCTURAL ENGINEER.
5. ALL MEASUREMENTS ARE IN MILLIMETRES UNLESS STATED OTHERWISE.



**BRAMPTON**  
Flower City

**BASEBALL / SOFTBALL  
DUGOUT ELEVATIONS**

SPORTS FACILITIES - SERIES 400    SEPTEMBER 2014

**L416**

N.T.S