

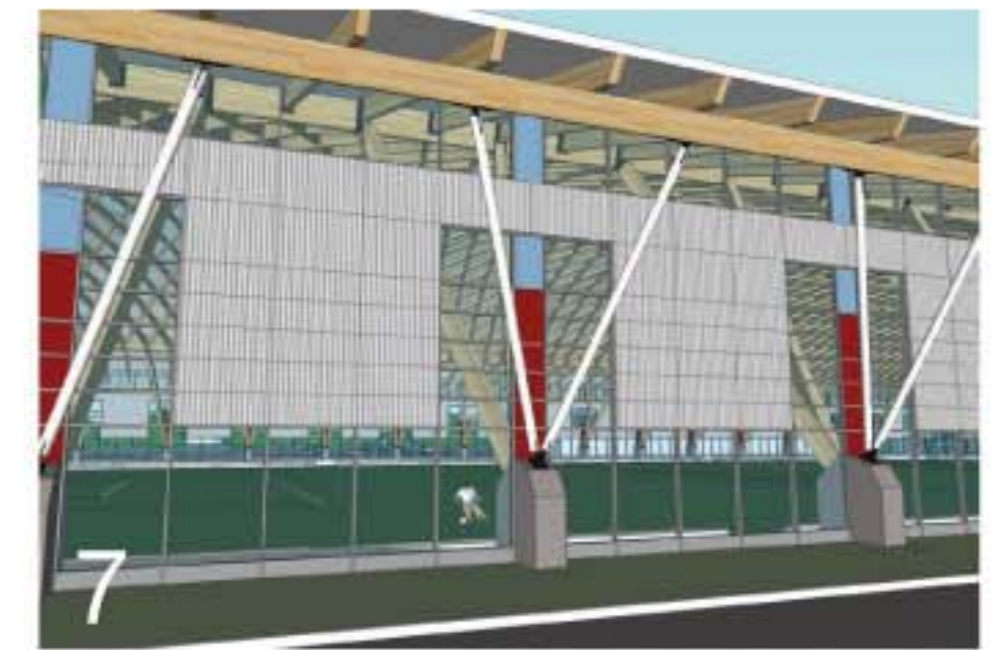
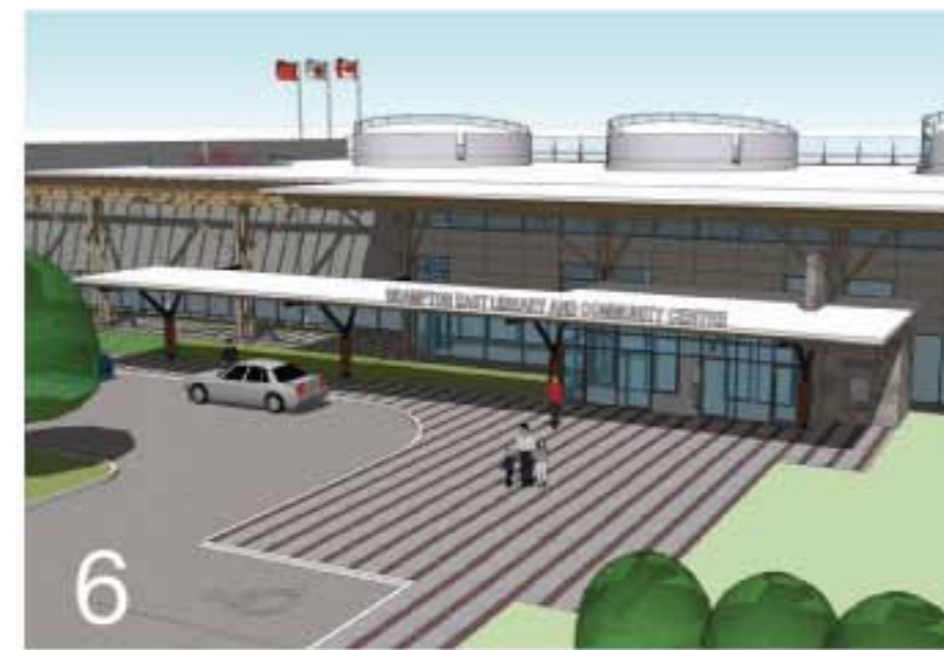
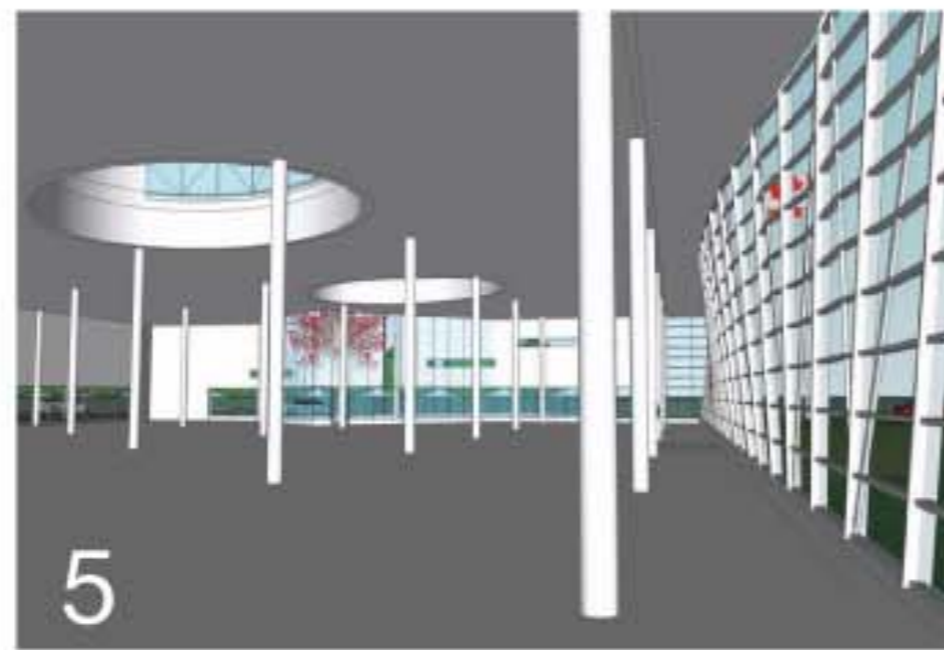
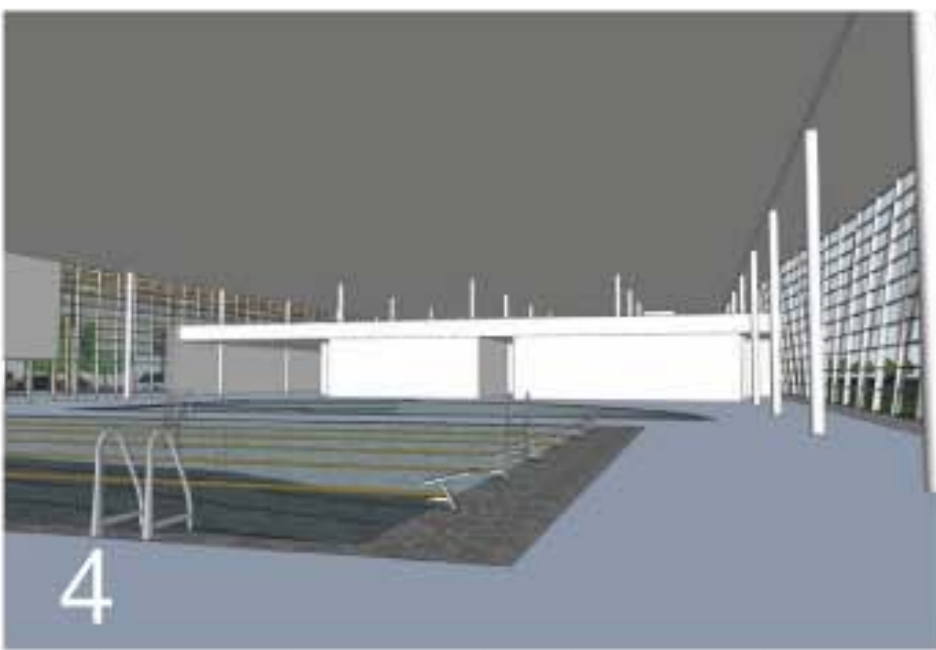
## CONCEPT 3D MODEL

# Bram East Library & Community Centre



517 WELLINGTON ST. W.  
SUITE 404  
TORONTO ONTARIO  
CANADA M5V 1G1

T: 416 979 9834  
F: 416 979 3763  
info@zasa.com  
www.zasa.com



**LEGEND**

- 1. Library - north view
- 2. Main Entrance West approach
- 3. Undulating glass wall along the Gore Road
- 4. Aquatics Centre

- 5. Library Interior - view towards Reading Garden
- 6. Main Entrance
- 7. Field House Exterior
- 8. Field House Interior

- 9. Promenade
- 10. Promenade
- 11. Heritage House - Community Gathering Space
- 12. Elevation - Southwest

**CONCEPT IMAGES**

Bram East Library & Community Centre



517 WELLINGTON ST. W.  
SUITE 404  
TORONTO ONTARIO  
CANADA M5V 1G1

T: 416 979 9834  
F: 416 979 3763  
info@zasa.com  
www.zasa.com

# LANDSCAPE CONCEPT

## THE FARM FIELDS

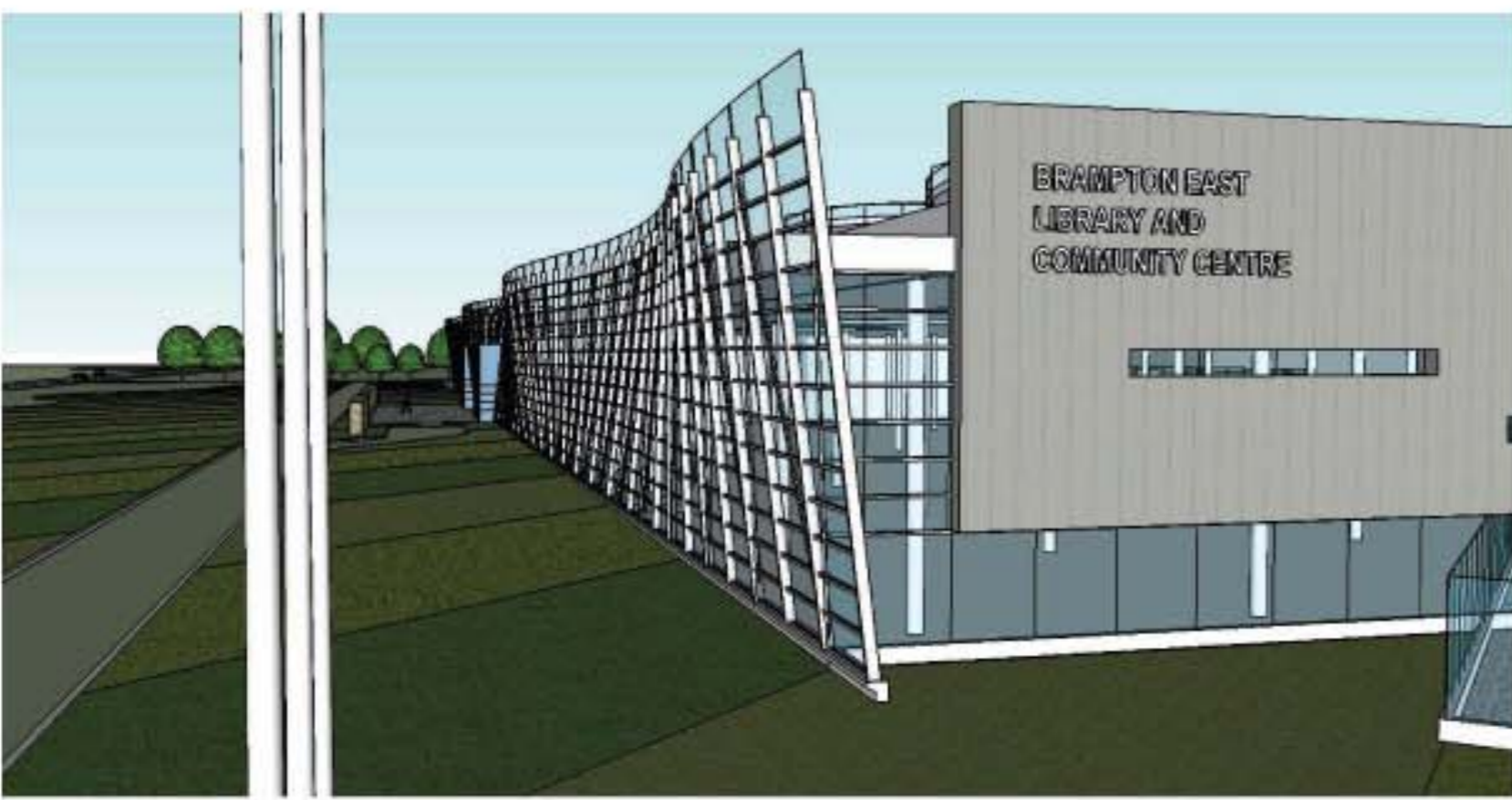


### The Farm Fields

Reminiscent of the past farmers' fields, the landscape design paints an artistic expression of the plowed lanes abstracted into bands of selected vegetation, perennial flower beds, ground cover, grids of bushes and trees (orchards). The existing trees and driveway to the heritage house are maintained and upgraded to create a possible pedestrian and bicycle route to a public gathering space in phase 2 of the project and through the 143 acre park and valley lands beyond.

# BUILDING CONCEPT

## THE UNDULATING WALL



### The Undulating Wall

The bands of landscape sloping slightly up towards the building sets the foreground for the building's feature, a multi directional curved glass wall simulating the undulations of the planted harvest fields as the wind flows through.

In its movement, the feature glass wall reflects a spectrum ranging from the sky to the distant landscape to the immediate surrounding ground at its feet.

## THE PROMENADE: THE EXPERIENCE WALK



### The Promenade: The Experience Walk

An interpretation of a path cutting through the fields, the promenade or pedestrian experience walk is an axial organizing principle that expands and contracts as it links the facilities comprising the project providing spaces of interest and patron interaction along its course. It extends beyond the building traversing through the landscape, a linear force that cuts through the contrasting natural growth as it connects various points of interest through the site. The Promenade may provide a visual overview of the possible exterior soccer and cricket fields located to the west of the building as well as panoramic views to the Humber West valley beyond.

Rows of abstracted trees made of wood and steel support the structure of the promenade and provide a rich, warm environment which accompanies you through the space.

## NATURAL LIGHT



### Natural Light

The building spaces are bathed in natural light. The undulating wall with energy efficient glazing along the northeast elevation provides natural light to the spaces within while offering an invitational view of the activities and programmed building spaces from the Gore Road.

The glazing at the roof monitors of the library are oriented northward providing natural light while blocking direct sunlight. A linear skylight introduced between the tree colonnades creates the link between the initial and future phases of the project.

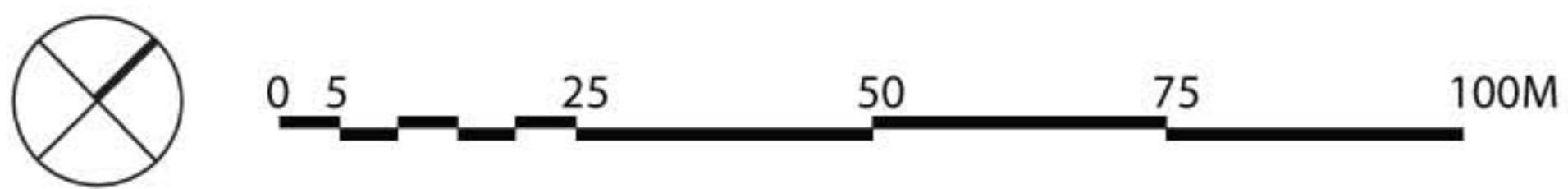
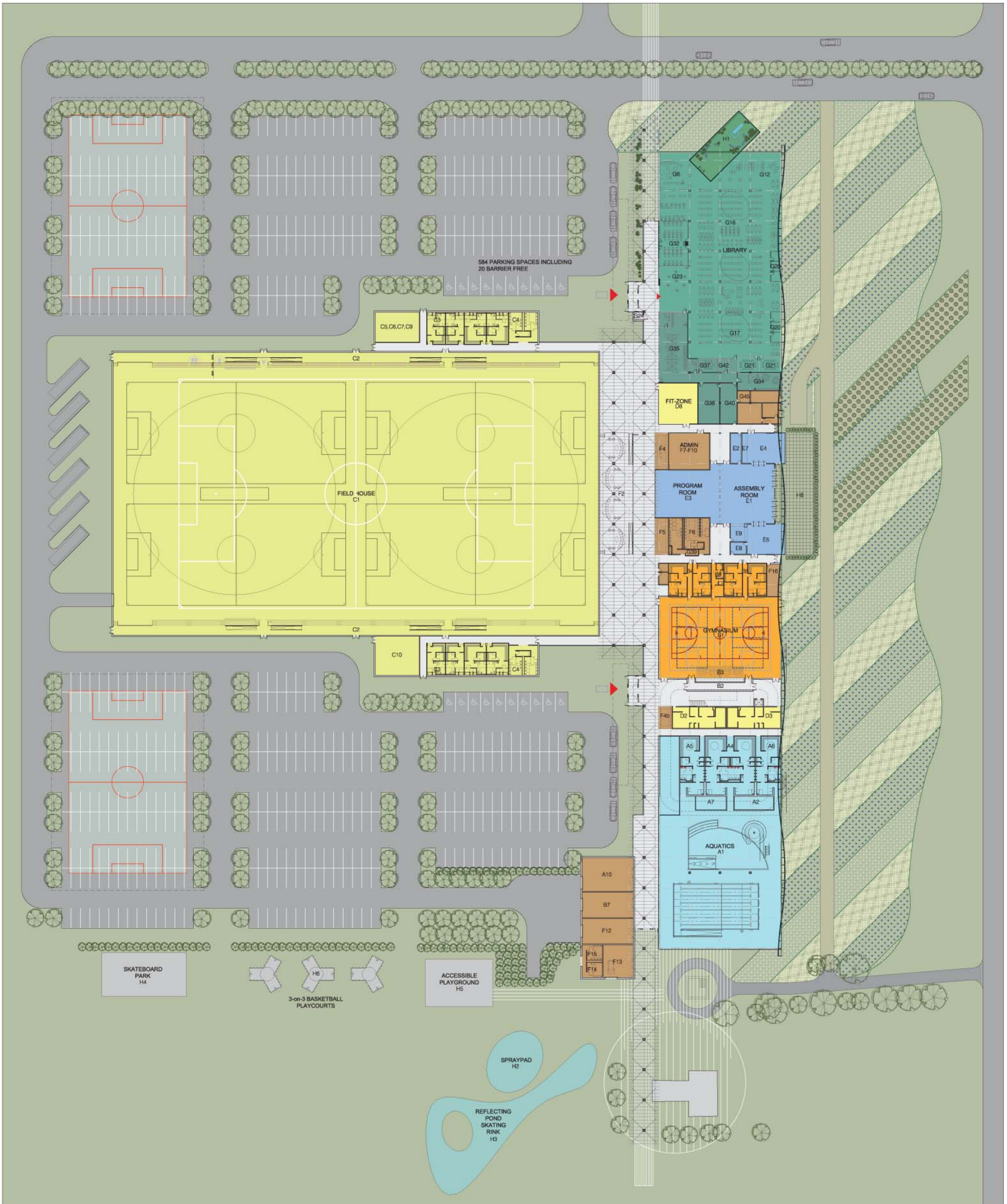
## THE CONCEPT

# Bram East Library & Community Centre



517 WELLINGTON ST. W.  
SUITE 404  
TORONTO ONTARIO  
CANADA M5V 1G1

T: 416 979 9834  
F: 416 979 3763  
info@zasa.com  
www.zasa.com



# CONCEPT GROUND FLOOR PLAN

## Bram East Library & Community Centre

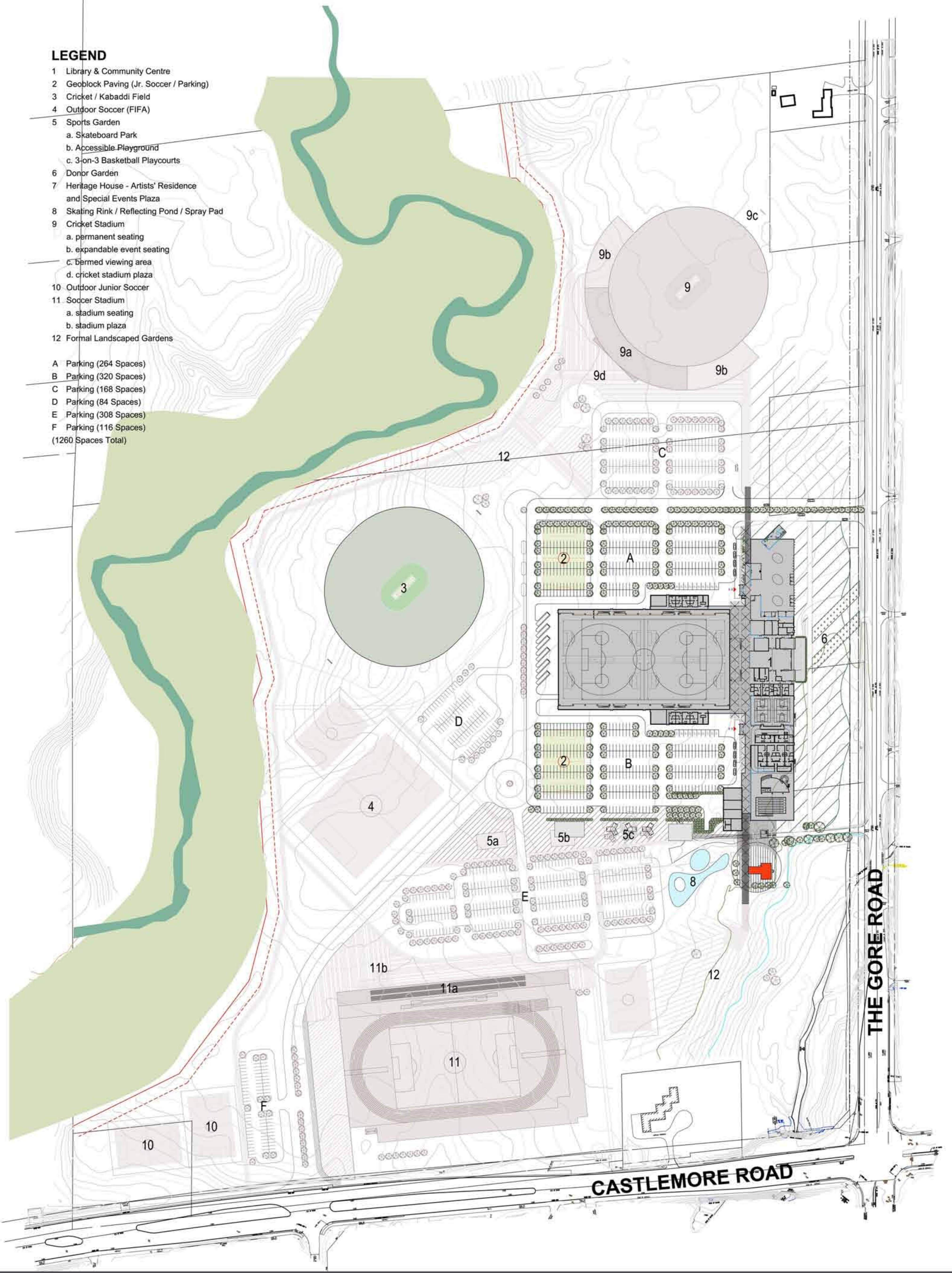


517 WELLINGTON ST. W.  
SUITE 404  
TORONTO ONTARIO  
CANADA M5V 1G1

T: 416 979 9834  
F: 416 979 3763  
info@zasa.com  
www.zasa.com

**LEGEND**

- 1 Library & Community Centre
  - 2 Geoblock Paving (Jr. Soccer / Parking)
  - 3 Cricket / Kabaddi Field
  - 4 Outdoor Soccer (FIFA)
  - 5 Sports Garden
    - a. Skateboard Park
    - b. Accessible Playground
    - c. 3-on-3 Basketball Playcourts
  - 6 Donor Garden
  - 7 Heritage House - Artists' Residence and Special Events Plaza
  - 8 Skating Rink / Reflecting Pond / Spray Pad
  - 9 Cricket Stadium
    - a. permanent seating
    - b. expandable event seating
    - c. Barred viewing area
    - d. cricket stadium plaza
  - 10 Outdoor Junior Soccer
  - 11 Soccer Stadium
    - a. stadium seating
    - b. stadium plaza
  - 12 Formal Landscaped Gardens
- 
- A Parking (264 Spaces)
  - B Parking (320 Spaces)
  - C Parking (168 Spaces)
  - D Parking (84 Spaces)
  - E Parking (308 Spaces)
  - F Parking (116 Spaces)
  - (1260 Spaces Total)



**OVERALL SITE CONCEPT**

Bram East Library & Community Centre



517 WELLINGTON ST. W.  
SUITE 404  
TORONTO, ONTARIO  
CANADA M5V 1G1

T. 416 979 9834  
F. 416 979 3763  
info@zasa.com  
www.zasa.com