

Alderlea Information Update

The City of Brampton takes heritage preservation seriously. We are pleased to provide you with periodic updates on the restoration, rebuilding and adaptive reuse of historic Alderlea.

Background on Alderlea's Restoration

The first step in restoring Alderlea was to demolish the two-storey addition built by the Legion in 1948, which was determined not to have architectural heritage value.

We hired a demolition contractor – one who is familiar with heritage properties – to dismantle and carefully detach the addition from the west side of Alderlea this past April. Since then the contractor has been doing selective demolition work to remove non-heritage elements from inside Alderlea.

In keeping with Council's request that "*Alderlea be a City-operated, corporate facility for meetings, visiting officials, private and public corporate events, and reception, making it a downtown landmark and a demonstration project of the Flower City Strategy*", Taylor Hazell Architects (THA) prepared plans to show what a restored Alderlea will look like, including:

- A well landscaped, estate-like site that reconnects Alderlea to Gage Park and is well screened with plantings along neighbouring perimeters and approximately 35 parking spaces
- High quality restoration and reconstruction of all major exterior elements
- High quality restoration of the main rooms on the ground floor and renovation of all rooms on the second floor
- A well-proportioned, single-storey addition of approximately 3,500 sq. ft. that provides a "Great Hall" for public and private functions and recalls the former greenhouse structure that was attached to Alderlea.

These concept designs were approved by Council on June 23, 2010.

Current and Upcoming Work

- Selective demolition work within Alderlea is scheduled to wrap up in late September 2010
- **Two phases** of design and construction work are planned:
 - **Phase One** – early October to end of 2010
 - Exterior restoration to the east and north facades, including
 - stabilization of the foundation
 - restoration of masonry and wood work
 - window replacement
 - reconstruction of the original main entrance and porch

- **Phase Two** – currently in the early design phase; construction to begin March 2011
Work will include:
 - Complete interior and exterior restoration (completed December 2011)
 - Build new addition (completed December 2011)
 - Complete site work including landscaping (completed late spring 2012)



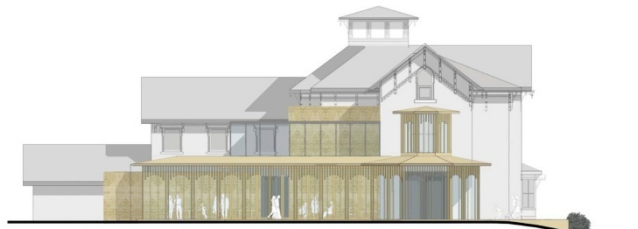
Concept: Site plan



Concept: Ground Floor Plan



Concept: East Elevation



Concept: South Elevation

For more information about the restoration and design of Alderlea, call Davis Falsarella, Project Manager at 905.874.2050.