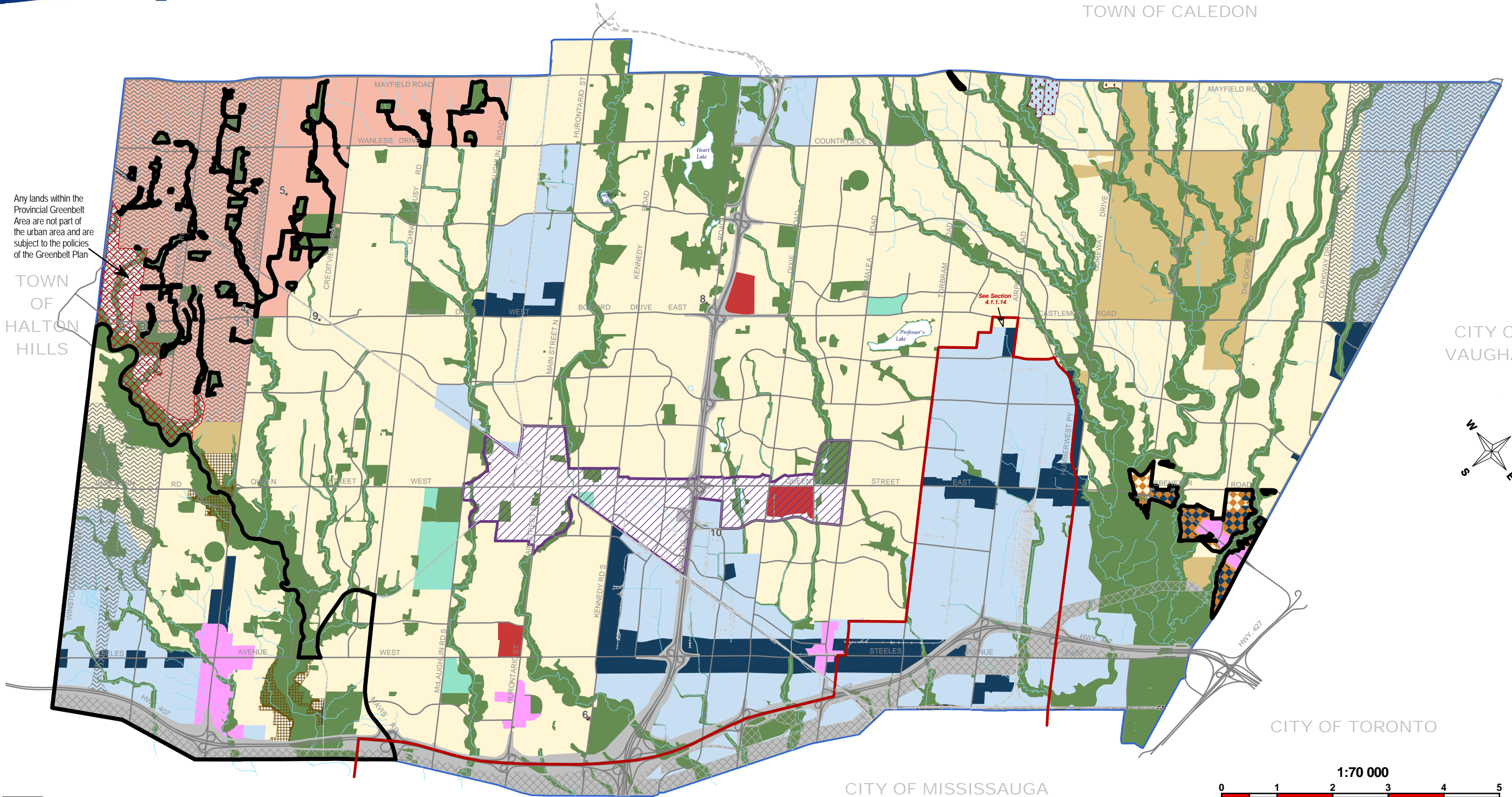


Any lands within the Provincial Greenbelt Area are not part of the urban area and are subject to the policies of the Greenbelt Plan

TOWN OF HALTON HILLS

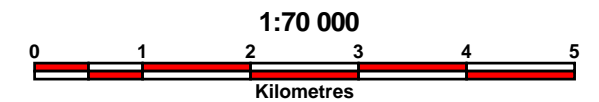
CITY OF VAUGHAN



CITY OF TORONTO

CITY OF MISSISSAUGA

APPEALED TO THE OMB



LEGEND	
RESIDENTIAL	BUSINESS CORRIDOR
ESTATE RESIDENTIAL	INDUSTRIAL
VILLAGE RESIDENTIAL	MAJOR INSTITUTIONAL
REGIONAL RETAIL	OPENSOURCE
OFFICE	PROVINCIAL GREENBELT AREA/PROTECTED COUNTRYSIDE
CENTRAL AREA	CORRIDOR PROTECTION AREA
N-W BRAMPTON URBAN DEVELOPMENT AREA SPECIAL LAND USE POLICY AREA See Section 4.13	PARKWAY BELT WEST
SPECIAL STUDY AREA See Section 4.13	PROVINCIAL HIGHWAYS
	L.B.P.I.A. OPERATING AREA
	DEFERRAL

Last Amended Date
October 7, 2008

Printed Date
October 7, 2008

NOTES:
This map forms part of the Official Plan of the City of Brampton and must be read in conjunction with the text, other schedules and secondary plans. The boundaries and alignments of designations on this schedule are approximate and are not intended to be scaled.

Schedule A

GENERAL LAND USE DESIGNATIONS