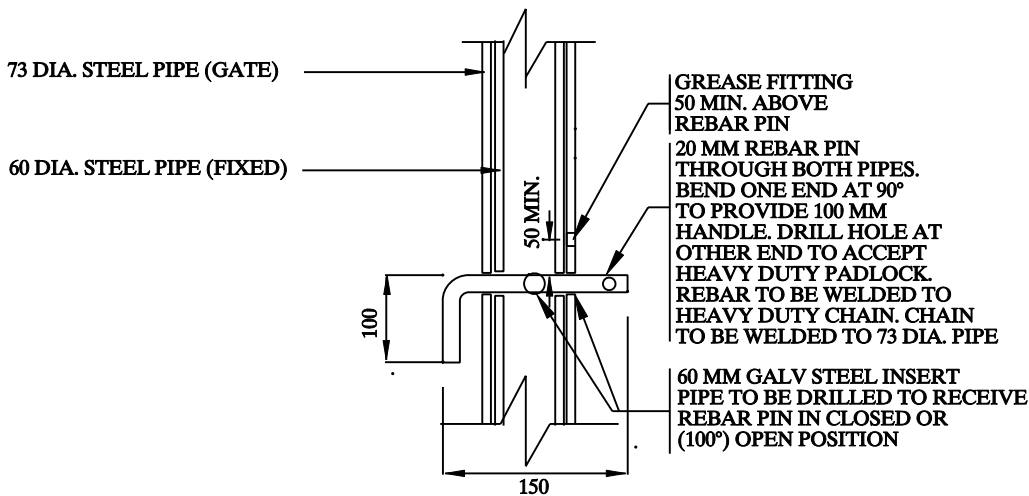


NOTES:

1. ALL PIPE AND COMPONENTS SHALL BE GALVANIZED AFTER FABRICATION.
2. ALL PIPE SHALL BE SCHEDULE 40. STEEL
3. ALL JOINTS TO BE CONTINUOUS WELDS (MIN. 6 THICK) AND BE GROUND SMOOTH
4. CONTRACTOR TO SUPPLY HEAVY DUTY PADLOCK AS REQUIRED
5. ALL MEASUREMENTS ARE IN LIMETERS UNLESS STATED OTHERWISE



LOCKING DEVICE N.T.S

1. LOCKING PIN TO BE GALVANIZED AFTER BENDING.
2. ON SITE WELDS TO BE GROUND SMOOTH, PRIMED AND FINISHED WITH APPROVED ZINC RICH COATING AS PER OPSS 911



**PLANNING,
DESIGN &
DEVELOPMENT
DEPARTMENT**

TITLE:

P-GATE DETAIL

DRAWING NO.

PDD 841

REVIEWED BY:

S.H. [Signature]

SCALE:

N.T.S.

APPROVED BY:

[Signature]

DATE:

JANUARY 2007