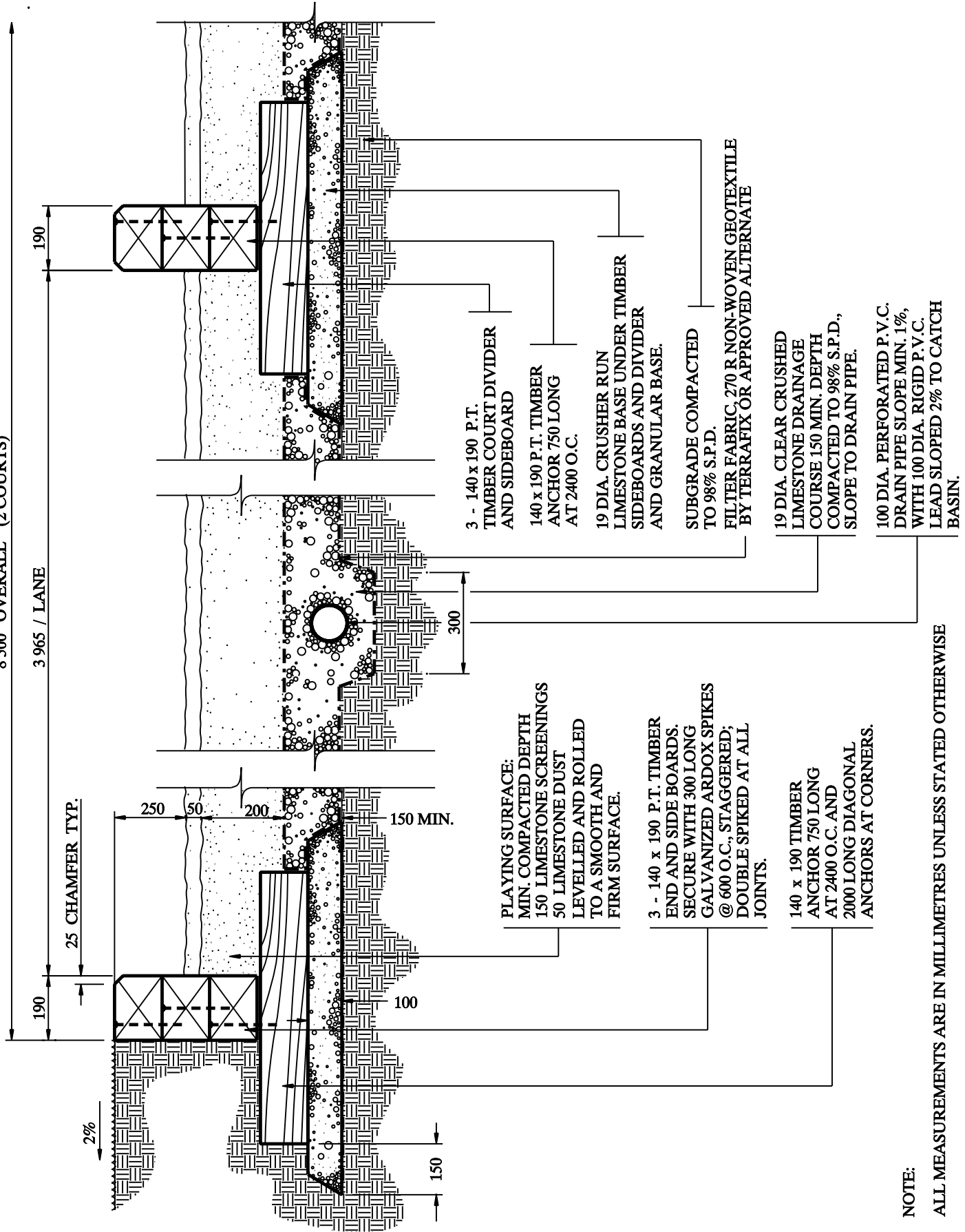


8 500 OVERALL (2 COURTS)

3 965 / LANE



3 - 140 x 190 P.T. TIMBER COURT DIVIDER AND SIDEBOARD

140 x 190 P.T. TIMBER ANCHOR 750 LONG AT 2400 O.C.

19 DIA. CRUSHER RUN LIMESTONE BASE UNDER TIMBER SIDEBOARDS AND DIVIDER AND GRANULAR BASE.

SUBGRADE COMPACTED TO 98% S.P.D.

FILTER FABRIC, 270 RNON-WOVEN GEOTEXTILE BY TERRAFIX OR APPROVED ALTERNATE

19 DIA. CLEAR CRUSHED LIMESTONE DRAINAGE COURSE 150 MIN. DEPTH COMPACTED TO 98% S.P.D., SLOPE TO DRAIN PIPE.

100 DIA. PERFORATED P.V.C. DRAIN PIPE SLOPE MIN. 1%, WITH 100 DIA. RIGID P.V.C. LEAD SLOPED 2% TO CATCH BASIN.

PLAYING SURFACE: MIN. COMPACTED DEPTH 150 LIMESTONE SCREENINGS 50 LIMESTONE DUST LEVELLED AND ROLLED TO A SMOOTH AND FIRM SURFACE.

3 - 140 x 190 P.T. TIMBER END AND SIDE BOARDS. SECURE WITH 300 LONG GALVANIZED ARDOX SPIKES @ 600 O.C., STAGGERED; DOUBLE SPIKED AT ALL JOINTS.

140 x 190 TIMBER ANCHOR 750 LONG AT 2400 O.C. AND 2000 LONG DIAGONAL ANCHORS AT CORNERS.

NOTE:  
ALL MEASUREMENTS ARE IN MILLIMETRES UNLESS STATED OTHERWISE



PLANNING,  
DESIGN &  
DEVELOPMENT  
DEPARTMENT

TITLE:  
BOCCE COURTS (SECTION)

DRAWING NO.  
N.T.S. 461

REVIEWED BY: *S.D. [Signature]*

SCALE: N.T.S.

APPROVED BY: *[Signature]*

DATE: JANUARY 2007