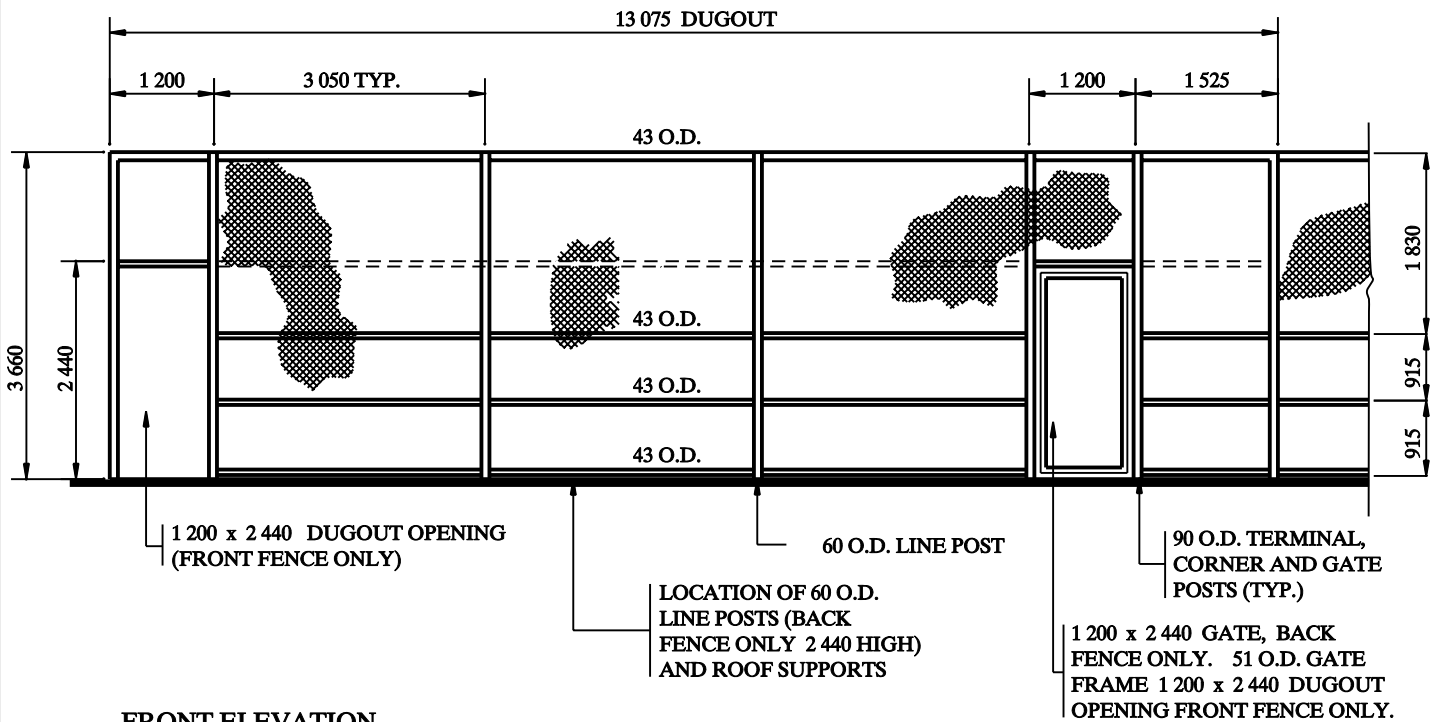


SIDE ELEVATION



FRONT ELEVATION

NOTES:

1. DUGOUT TO BE OF ALL WELD CONSTRUCTION
2. MESH SHALL BE 38 GALVANIZED CHAIN LINK 3.5mm (9 GAUGE) SECURED WITH STRETCHER BARS AT POSTS AND BAR BANDS @ 250 O.C. AND KNUCKLED FASTENERS 3.5mm O.D. @ 250 O.C.
3. ALL MEASUREMENTS ARE IN MILLIMETRES UNLESS STATED OTHERWISE



PLANNING,
DESIGN &
DEVELOPMENT
DEPARTMENT

TITLE: **BASEBALL DUGOUT
FRONT & SIDE ELEVATIONS**

DRAWING NO.
PDD 416

REVIEWED BY: *SH*

SCALE: **N.T.S.**

APPROVED BY: *Steve Walsh*

DATE: **JANUARY 2007**