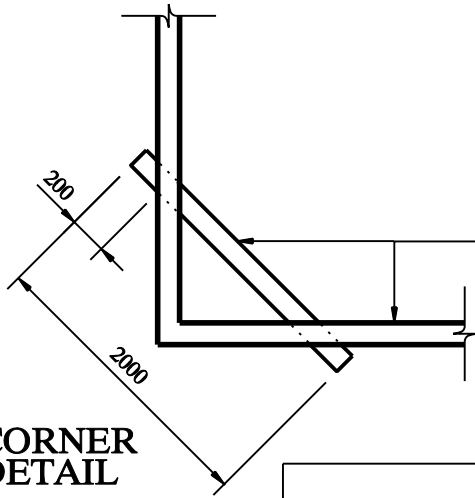


**CORNER
DETAIL**

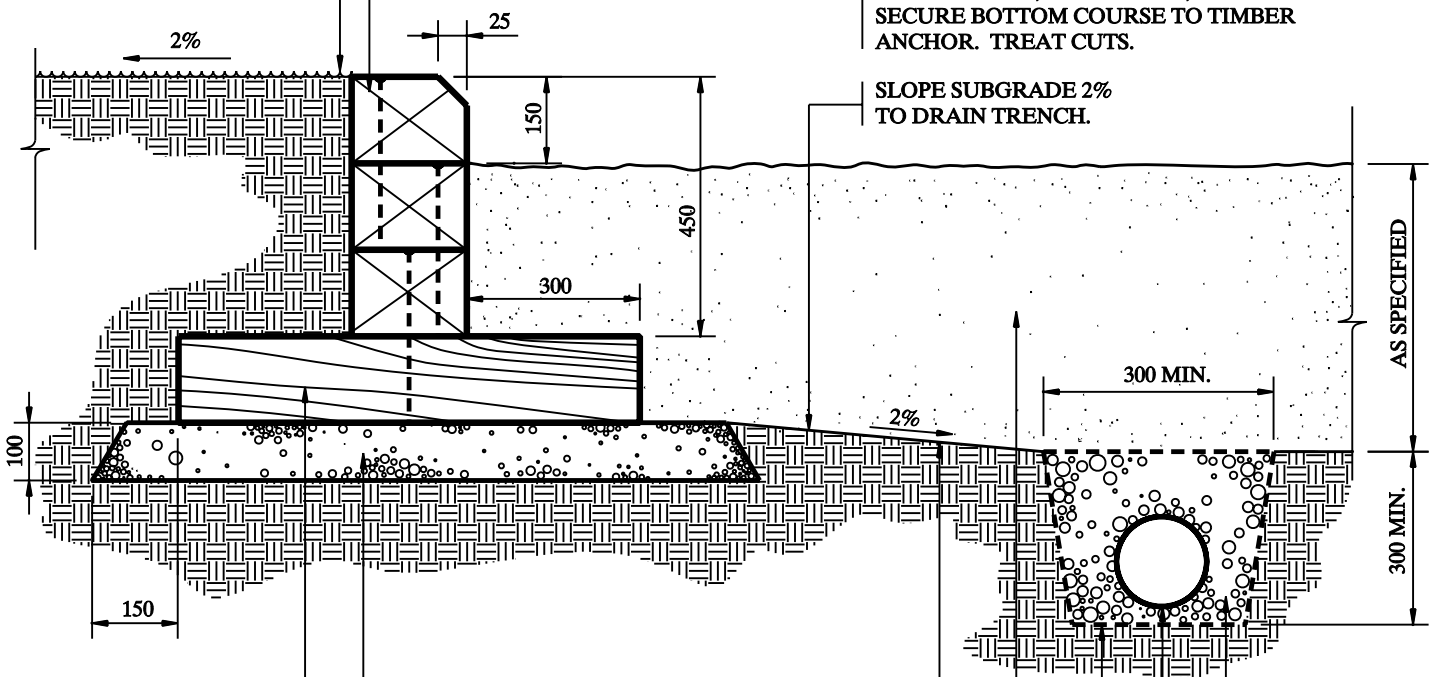


150 x 200 x 2000 LONG
CORNER ANCHOR

ADJACENT SURFACE TO BE FLUSH
WITH TOP OF CURB.

150 x 200 P.T. TIMBER CURB W/ 25 x 25
CHAMFER, STAGGERED JOINTS, SECURE
COURSES W/300mm GALVANIZED ARDOX
SPIKES 600 O.C., STAGGERED,
SECURE BOTTOM COURSE TO TIMBER
ANCHOR. TREAT CUTS.

SLOPE SUBGRADE 2%
TO DRAIN TRENCH.



150 x 200 x 800
P.T. TIMBER
ANCHOR @ 2400 O.C.

19 DIA. CRUSHER
RUN LIMESTONE
BASE COMPACTED
TO 98% SPD

100 DIA. PERFORATED P.V.C.
DRAIN PIPE WITH FILTER
SOCK, SLOPED 2% TO 100 DIA.
RIGID PIPE CONNECTION
FROM PLAYGROUND CURB
TO CATCH BASIN

COMPACTED SUBGRADE
TO 98% SPD

PLAY MIX:
450 MIN. DEPTH, COARSE
WASHED CONCRETE SAND,
MAX. 1.5mm

FILTER FABRIC - TERRAFIX
270R WRAPPED AROUND
TRENCH OVERLAP 150

100 DIA. PERFORATED PVC
DRAIN PIPE WITH FILTER
SOCK, SLOPED 2% TO RIGID
PIPE CONNECTION

19 DIA. CLEAR
CRUSHED LIMESTONE

100 DIA. RIGID P.V.C. PIPE FROM PLAYGROUND EDGE TO C.B.

NOTES:

1. ALL LUMBER DIMENSIONS ARE NOMINAL.
2. ALL MEASUREMENTS ARE IN MILLIMETERS UNLESS SHOWN OTHERWISE.
3. ALL PRESSURE TREATED LUMBER TO BE INCISED.



**PLANNING,
DESIGN &
DEVELOPMENT
DEPARTMENT**

TITLE: **PLAY AREA
TIMBER CURBING (SECTION)**

DRAWING NO.
PDD 314

REVIEWED BY: *[Signature]*

SCALE: **N.T.S.**

APPROVED BY: *[Signature]*

DATE: **JANUARY 2007**