



THE CORPORATION OF THE CITY OF BRAMPTON

# BY-LAW

Number 194-2002

To amend By-law 151-88, as amended.

---

The Council of the Corporation of the City of Brampton ENACTS as follows:

1. By-law 151-88, as amended, is hereby further amended:
  - (1) by changing, on Sheet 62E of Schedule A thereto, the zoning designation of the lands shown outlined on Schedule A to this by-law from INDUSTRIAL TWO A – SECTION 168 (M2A – SECTION 168) to INDUSTRIAL TWO A – SECTION 1142 (M2A – SECTION 1142).
  - (2) by adding thereto the following section:

“1142 The lands designated M2A – Section 1142 on Sheet 62E of Schedule A to this by-law:

1142.1 shall only be used for the following purposes:

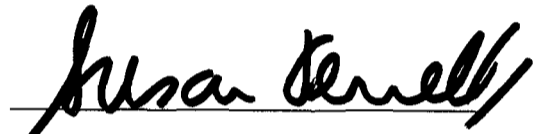
    - (a) the purposes permitted by the M2A zone
    - (b) a place of worship
    - (c) one residential unit contained within, and used only in conjunction with, a place of worship

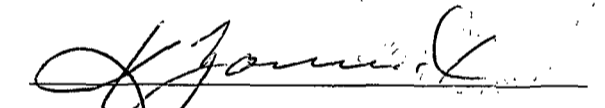
1142.2 shall be subject to the following requirements and restrictions:

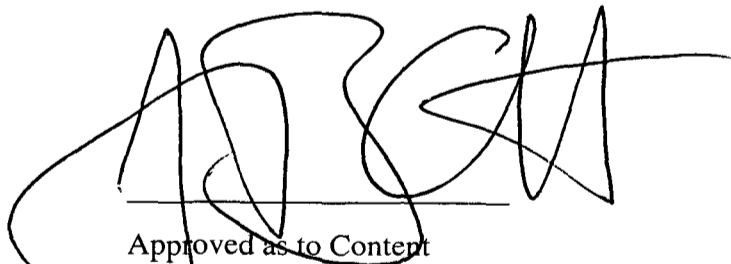
    - (a) Maximum Floor Area of Worship Area – 1,040 square metres
    - (b) A minimum of 1 parking space shall be provided for the residential unit

1142.3 shall also be subject to the requirements and restrictions of the M2A zone and all the general provisions of this by-law that are not in conflict with those in section 1142.2. "

READ a FIRST, SECOND and THIRD TIME, and PASSED, in OPEN COUNCIL, this 17<sup>th</sup> day of July 2002.

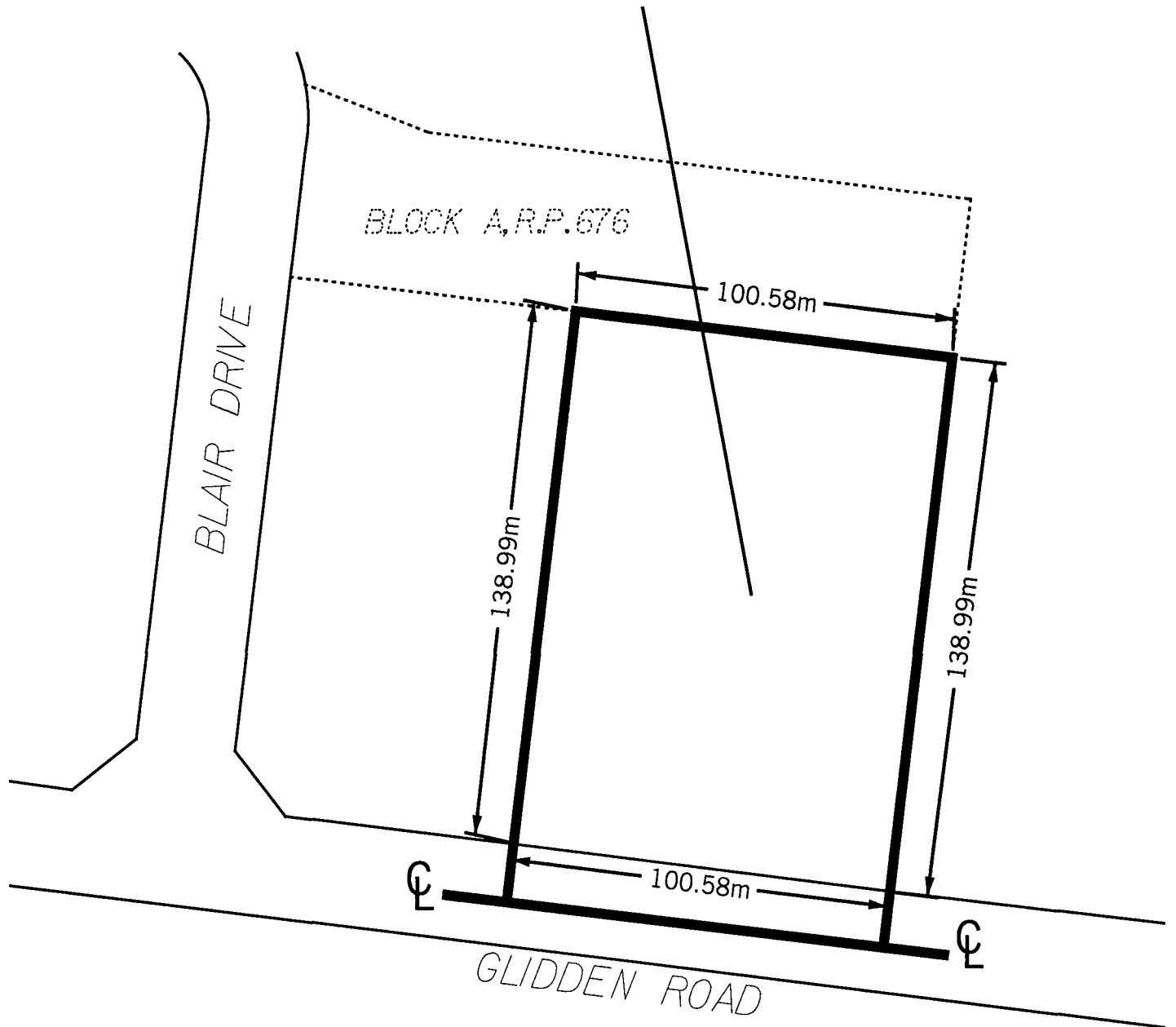
  
SUSAN FENNELL - MAYOR

  
~~LEONARD J. MIKULICH - CITY CLERK~~  
KATHRYN ZAMMIT, ACTING CITY CLERK



  
Approved as to Content  
John B. Corbett, M.C.I.P., R.P.P.  
Director, Planning and Land Development Services



# M2A-SECTION 1142



## LEGEND

-  ZONE BOUNDARY
-  CENTRELINE OF ORIGINAL ROAD ALLOWANCE
- m METRES



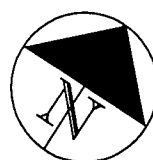
**PART LOT 2, CONCESSION 2 E.H.S.**

**BY-LAW 151-88**

**SCHEDULE A**

**By-Law 194-2002**

**Schedule A**



**CITY OF BRAMPTON**  
Planning and Building

Date: 2002 06 14

Drawn by: CJK

File no. C2E2.11

Map no. 62-46F