



THE CORPORATION OF THE CITY OF BRAMPTON

BY-LAW

Number 160-2013

To accept and assume works in

Registered Plan 43M-1677

WHEREAS the Council of The Corporation of the City of Brampton has, by resolution, decided that all works constructed and installed in accordance with the subdivision agreement for Registered Plan 43M-1677 be accepted and assumed;

AND WHEREAS Council has authorized the City Treasurer to release the securities held by the City;

AND WHEREAS it is deemed expedient to accept and assume the streets on Registered Plan 43M-1677 as part of the public highway system.

NOW THEREFORE the Council of The Corporation of the City of Brampton hereby **ENACTS** as follows:

1. All of the works constructed and installed in accordance with the subdivision agreement for Registered Plan 43M-1677 are hereby accepted and assumed.
2. The lands described in Schedule A to this by-law are hereby accepted and assumed as part of the public highway system of the City of Brampton.

READ a FIRST, SECOND, AND THIRD TIME and PASSED in Open Council this 19th day of June, 2013.

Approved as to
form.
5/6/13
CG

Approved as to
content.
30 MAY 2013
[Signature]

[Signature]
Susan Fennell, Mayor

[Signature]
Peter Fay, City Clerk

SCHEDULE A TO BY-LAW NO. 160-2013

REGISTERED PLAN 43M-1677

Amethyst Circle, Aveena Road, Cottrelle Boulevard, Eastbrook Way, Mauve Drive, Onyx Gate, Peridot Road, Salvan Court, Skylar Circle, Thorndale Road, and Turquoise Crescent.

City of Brampton
Regional Municipality of Peel

**PLAN OF SUBDIVISION OF
PART OF LOT 7 AND
PART OF LOT 8
CONCESSION 10, NORTHERN DIVISION
(GEOGRAPHIC TOWNSHIP OF TORONTO GORE)
CITY OF BRAMPTON
REGIONAL MUNICIPALITY OF PEEL**

SCALE 1:1000
MAY, HENRY & EDWARD SURVEYING LTD., O.S.
METRIC
DISTANCES SHOWN ON THIS PLAN ARE IN METRES AND CAN
BE CONVERTED TO FEET BY DIVIDING BY 0.3048

OWNER'S CERTIFICATE

THIS IS TO CERTIFY THAT:
1. LOTS 1 TO 194, BOTH INCLUSIVE, BLOCKS 199 TO 224, BOTH INCLUSIVE, STREET MERRIDEN, NAMELY BLOCK 224, 0.30 RESERVE, NAMELY BLOCKS 226 TO 231 BOTH INCLUSIVE, STREETS, NAMELY, AVEAENA CIRCLE, AVEAENA ROAD, COTTRELLE BOULEVARD, EASTBROOK WAY, MAINE DRIVE, DATE DATE, PERIOD ROAD, SALVAN COURT, SKYLAR CIRCLE, THORNDALE ROAD AND TURKOISE CRESCENT HAVE BEEN LAYED OUT IN ACCORDANCE WITH OUR INSTRUCTIONS.
2. THE STREETS ARE HEREBY DEDICATED AS PUBLIC HIGHWAYS TO THE CORPORATION OF THE CITY OF BRAMPTON.
3. THE STREETS ARE HEREBY DEDICATED AS PUBLIC HIGHWAYS AS A PUBLIC HIGHWAY TO THE REGIONAL MUNICIPALITY OF PEEL.
DATED THE 25th DAY OF FEBRUARY 2005

DOLOMITI ESTATES INC.
David Reichtman
DAVID REICHTMAN
AUTHORIZED SIGNING OFFICER
I HAVE THE AUTHORITY TO BIND THE CORPORATION

NOTES

DEPOTES MONUMENT FOUND
DEPOTES MONUMENT SET
DEPOTES STANDARD IRON BAR
DEPOTES SHORT STANDARD IRON BAR
DEPOTES IRON BAR
DEPOTES ROUND IRON BAR
DEPOTES PROPERTY BOUNDARY NUMBER
DEPOTES P.O. SMITH O.S.
DEPOTES POINT OF REVERSE CURVE
DEPOTES PLAN 43R-28135
DEPOTES R. SMITH O.S.
DEPOTES W.L. STEPHENSON O.S.
DEPOTES R.G. WARDEN O.S.
DEPOTES G.E. YATES O.S.
DEPOTES S.L. CLIFORD O.S.
DEPOTES R.P.C.
DEPOTES H. PILLAR O.S.
(1217)

MARKERS ARE ASTRONOMIC AND ARE REFERRED TO THE
NORTHWEST CORNER OF PART 22 AS SHOWN ON PLAN 43R-1545
HAVING A BEARING OF N44°14'30"E

SURVEYOR'S CERTIFICATE

I CERTIFY THAT:
1. THIS SURVEY AND PLAN ARE CORRECT AND IN ACCORDANCE WITH THE SURVEY ACT, THE SURVEYS ACT AND THE LAND TITLES ACT AND THE REGULATIONS MADE UNDER THEM.
2. THE SURVEY WAS COMPLETED ON THE 25th DAY OF FEBRUARY 2005.
DATE FEB 25, 2005
C.P. Edrington
C. P. EDWRINGTON
ONTARIO LAND SURVEYOR

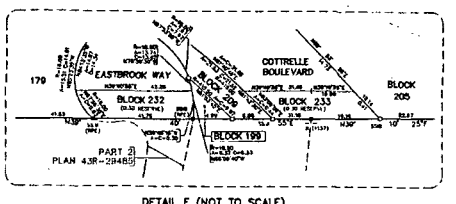
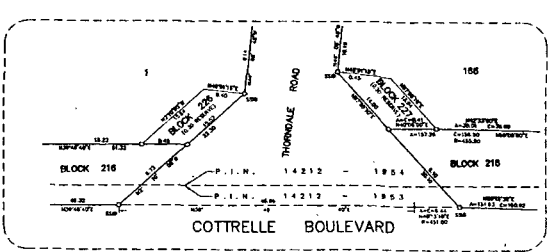
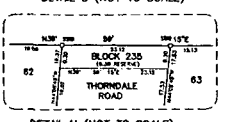
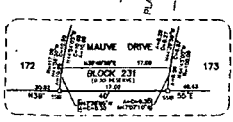
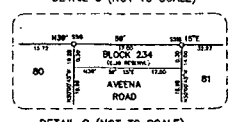
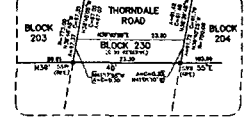
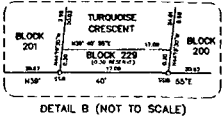
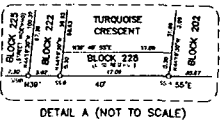
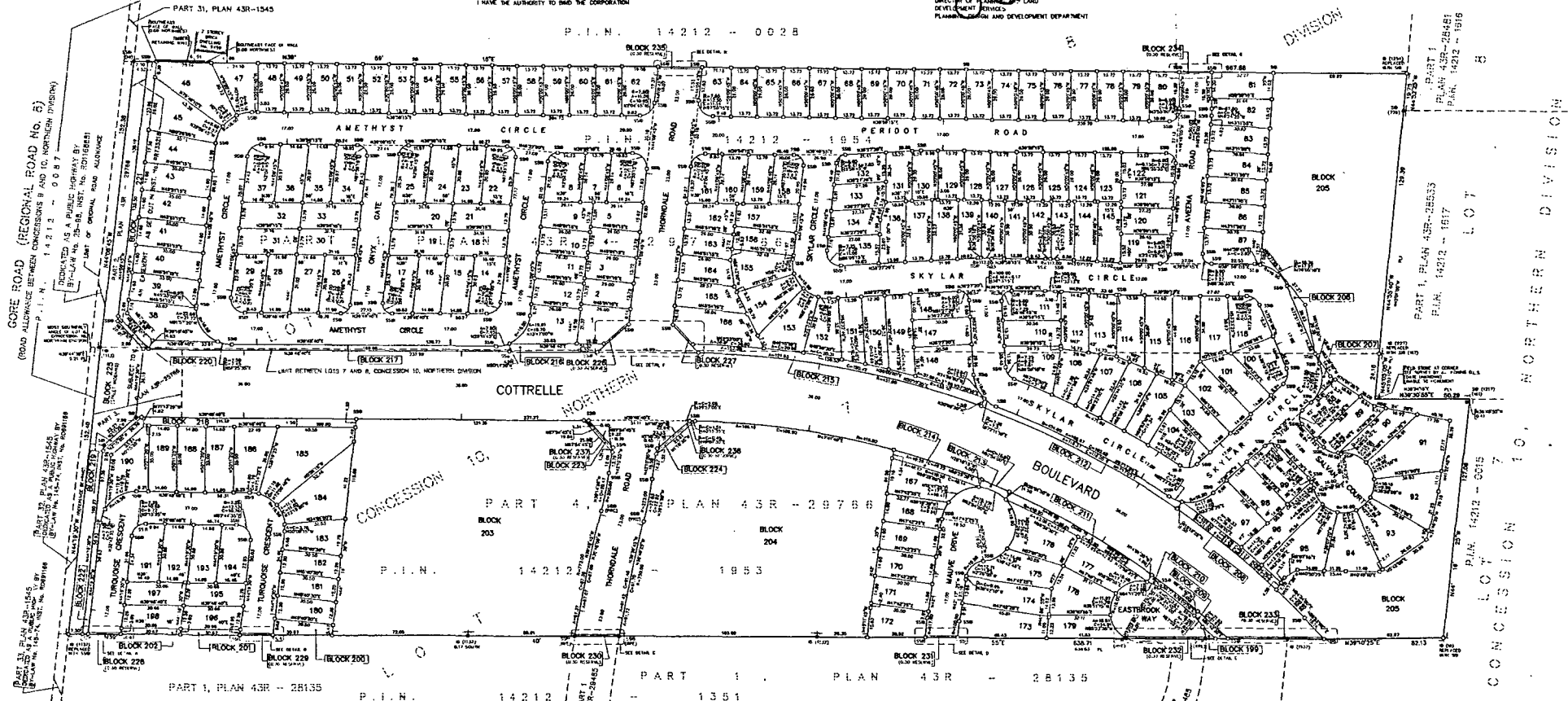
MUNICIPAL APPROVAL
211-03-0108
APPROVED UNDER SECTION 51 OF THE SURVEY ACT, R.S.O. 1990
THE 19th DAY OF April 2005
ASST
DIRECTOR OF PLANNING AND
DEVELOPMENT SERVICES
PLANNING AND DEVELOPMENT DEPARTMENT

211-03-0108

PLAN 43R-1677

I CERTIFY THAT THIS PLAN IS REGISTERED IN THE LAND REGISTRY OFFICE FOR THE LAND TITLES DIVISION OF PEEL AT 10:00 O'CLOCK ON THE 22nd DAY OF September 2005 AND ENTERED IN REGISTRY FOR PROPERTY IDENTIFIERS(S) 14212-1953, 14212-1954 AND THE REQUIRED CONSENTS ARE REGISTERED AS PLAN DOCUMENT NO. PA 828779

O. Cabral
ASST. DIR. LAND REGISTRY
THIS PLAN COMPRISES ALL OF P.I.N. 14212-1953 AND ALL OF PLAN 14212-1954 SUBJECT TO AN EASEMENT AS SET OUT BY HOST, INC. PROSPECTS (AFFECTS PART OF BLOCK 225 (STREET MERRIDEN) AND PART OF COTTRELLE BOULEVARD)



By-law 160-2013